

Skylands™
Concrete Deck Pavers

Skylands™ Concrete Deck Pavers
©2025 County Materials Corporation | 1535164734_0225
(800) 242-7733
countymaterials.com



SKYLANDS Concrete Deck Pavers in Dream

The color photos shown in this catalog were prepared with careful attention to accuracy. However, colors shown may vary from actual hues and should only be used as a guide. Refer to actual product samples for final color selection. Because concrete units are manufactured with high quality, naturally-mined aggregates and materials, variations in color or shading should be expected in products that are manufactured at different times and in units having different shapes. This color or shading variation is acceptable in the industry.



SKYLANDS
CONCRETE DECK PAVERS

COUNTY MATERIALS CORPORATION

SKYLANDS

SKYLANDS™ Concrete Deck Pavers are used to create inviting outdoor living spaces in areas otherwise unusable. Using pedestals, deck pavers turn pitched or uneven surfaces into functional living areas.



DISCOVER
more about this product



COLORS

Colors shown may vary from actual hues.

SOLID



BLENDED

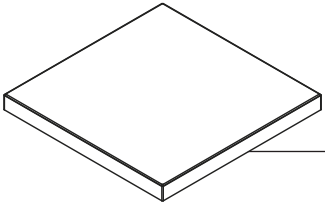


*Product color in-stock



SKYLANDS™ Concrete Deck Pavers

Units & Sizes

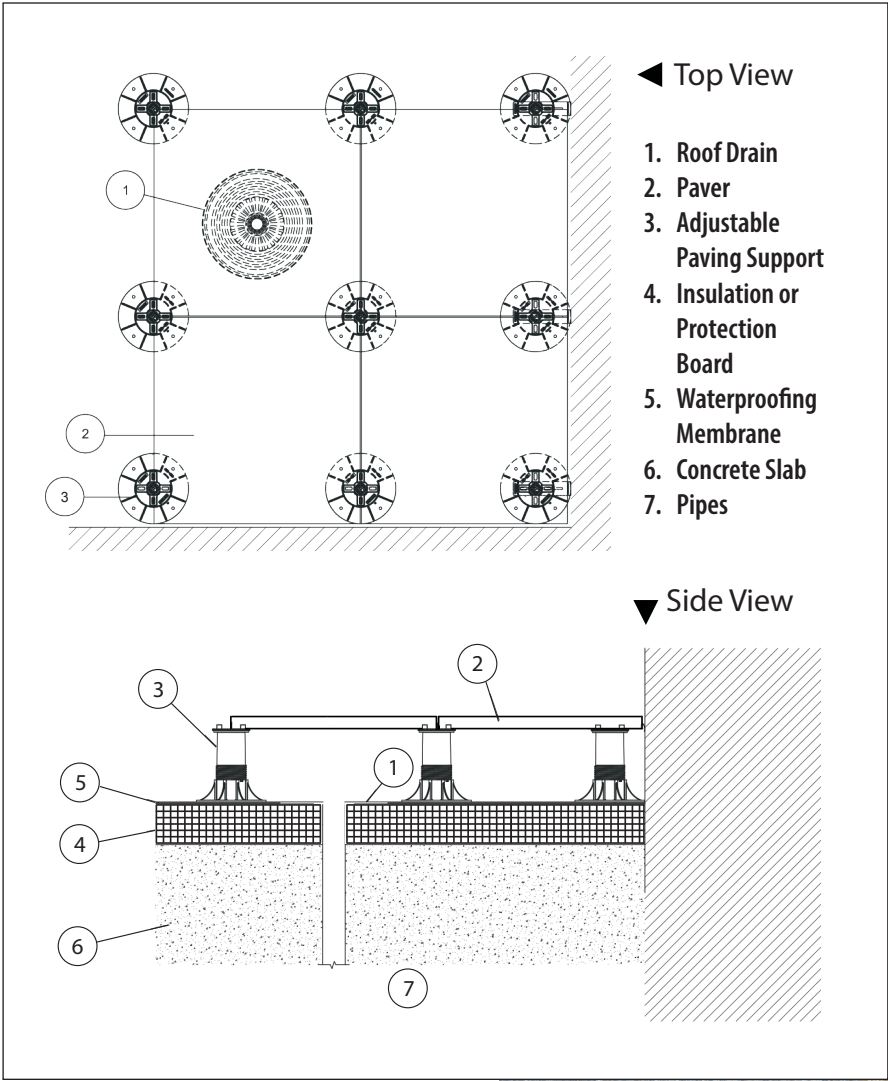


D x H x L (Nominal Size)
Inches

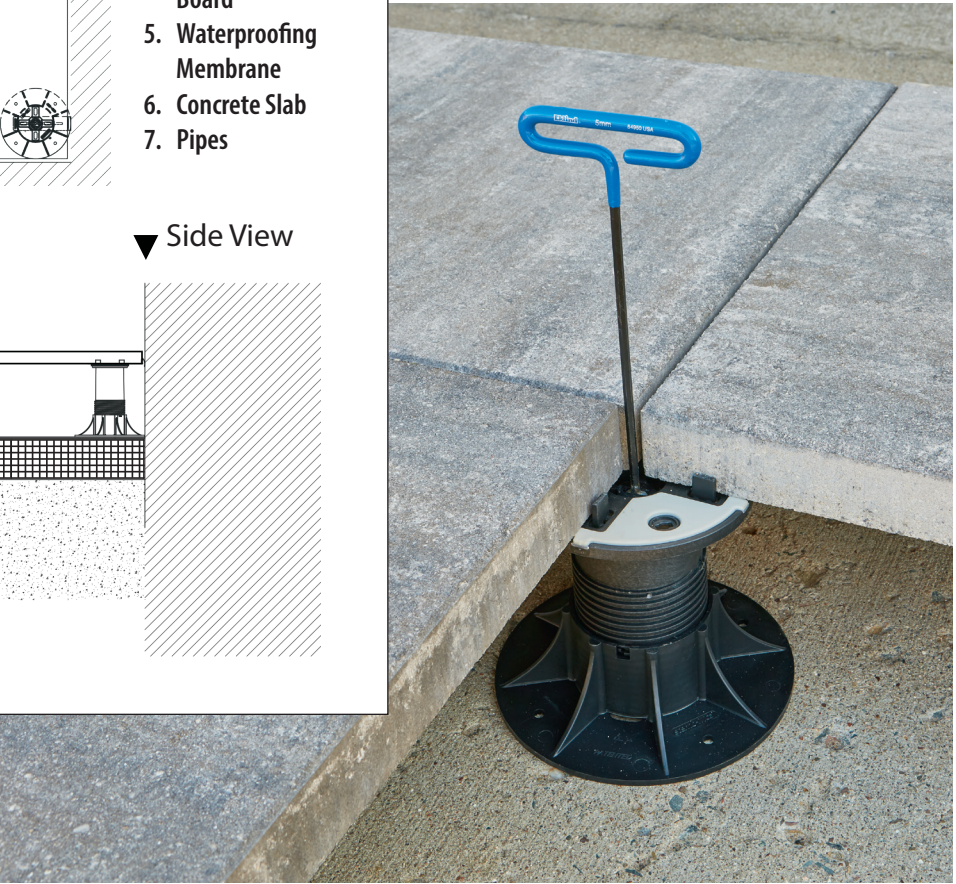
23 13/16 x 2 x 23 13/16

SF/Unit	Units/SF	SF/Pallet	Units/Pallet	Lbs/Pallet
4	.25	92	23	2300

Typical Pedestal Installation



Site layout and elevations are necessary to determine the quantity and heights of pedestals needed for each project. Please submit this information by contacting Customer Service at (800) 242-7733 or by emailing us at info@countymaterials.com.



The color photos shown in this catalog were prepared with careful attention to accuracy. However, colors shown may vary from actual hues and should only be used as a guide. Refer to actual product samples for final color selection. Because concrete units are manufactured with high quality, naturally-mined aggregates and materials, variations in color or shading should be expected in products that are manufactured at different times and in units having different shapes. This color or shading variation is acceptable in the industry.