



AVM System 520 Aussie Membrane 520

Heavy Duty Below Grade Polyurethane Waterproofing Membrane

Generic Spec

Section 071000 / 071400 / 071416
Fluid Applied Waterproofing

Product Name

AVM System 520, Aussie Membrane

AVM System No.

AVM System 520

By

AVM Industries, Inc.
8245 Remmet Ave, Canoga Park, CA 91304
888.414.1041 818.888.0050
www.avmindustries.com

Product Description

The **AVM Aussie Membrane 520** is a vapor-proof, Gray liquid polyurethane, which dries to a tough, seamless flexible waterproof membrane. The **Aussie Membrane 520** is a single component cold-applied polyurethane liquid. It exhibits excellent adhesion, strength, elongation and recovery properties.

Where to Use

Retaining Walls: Waterproof below-grade, concrete, block walls, basements, etc.

Planters: Waterproof planters and other landscaping features.

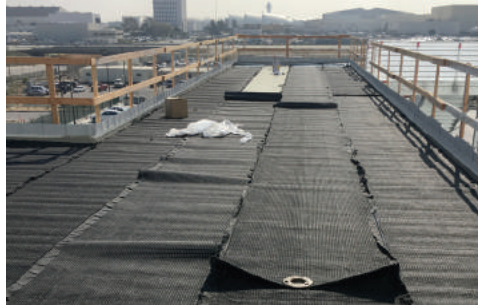
In-between slab waterproofing: To provide a sandwich membrane in-between two concrete slabs or over wood decks that will receive a topping slab. Also used as an under-tile membrane when an un-bonded mud-bed or thick-set type assembly is required.

Warranty

AVM Industries will warranty the installed membrane for a period of five (5) years. Ten (10) year warranties are also available. For complete warranty details, contact AVM Industries or consult with your applicator.

Delivery, Storage, and Handling

- Delivery of all the **AVM System 520** materials to the job site must be in their original sealed containers, with manufacturer's name and label intact.
- Handle and store containers in accordance with printed instructions.
- Store at temperatures between 50°F and 90°F. Do not store materials in direct sunlight or where they may be damaged by water or rain.



- Failure to comply with the recommended storage conditions may result in premature deterioration of the product. For specific storage advice, please contact AVM Industries and/or its representatives.
- Keep all materials out of the reach of children.
- If irritation occurs during use, liberally flush affected areas with water. If irritation continues, see a physician immediately.

Project Conditions

- All surfaces to which the **Aussie Membrane 520** is applied to must be sound and stable, with an even finish and free from dust, loose debris, grease, curing agents, etc.
- Do not apply materials at temperatures below 40°F and falling or if precipitation is imminent. Do not apply materials in direct sunlight at temperatures above 100°F or rising.
- Warn personnel against hazards of materials to skin and eyes. Note other hazardous conditions on the job that might require special protective gear and or any other special protective or safety procedures.
- Protect adjacent surfaces which could be damaged during the application procedure.
- This system must not be used to cover Expansion Joints.

System Application

Read the **AVM System 520** Installation Instructions Prior to Installation.

Green/Wet Concrete: Concrete substrates do not need to be fully cured. Depending on weather conditions and other factors, the **Aussie Membrane 520** may be applied to concrete that's been cured a minimum of seven (7) days. Depending on the amount of moisture, epoxy primer 400 may be needed. Do not apply the Aussie Membrane to waterlogged surfaces. Verify adhesion via a properly conducted pull test. Contact AVM for details.



Non-Vented Decks: For installation requirements over Non-Vented Decks, refer to the Aussie Membrane 520 Installation Instructions.

PSI: On traffic bearing surfaces, concrete substrates shall achieve a min compression strength of 2000 psi prior to installation.

Quality Control

- Visually inspect all coated surfaces to ensure a full and proper coating application, especially at corners, drainage footings and other hard-to-reach areas.
- All unsatisfactory areas shall be repaired prior to final acceptance.

Protection of Installed Work

- The completed section shall be protected for the first 24 hours after application or until the surface is sufficiently cured. (The amount of drying time may vary depending on temperature and humidity conditions)
- Always protect the waterproofing from possible damage. Use Drainage Boards or AVM Approved Protective Panels. Refer to the "Installation Instructions" or to the "Aussie Membrane 520 Min Thickness Table" for protection details.

Availability and Cost

Contact AVM Industries or your approved applicator for pricing and availability.

Technical Services

Technical services are available by contacting our offices at: **888.414.1041** or **818.888.0050** or visit **www.avmindustries.com**

System Specifications

See next page.

Packaging	Approximate Shipping Weights	VOC
AVM Aussie Membrane 520, 4.75 gal. pails	Approx 58 lbs.	75 Grams/Liter

Technical Information	Standard Values	Test Results
Color	Gray	
Coverage: (Varies depending on substrate)	125 sq.ft./Bucket @ 60 Dry Mills	
Service Temperature	-25°F-177°F (-31°C to +80°C)	
Application Temperature	40°F-100°F (+4°C to 38°C)	
Low Temperature Flexibility	-40°F (-40°C)	No cracking at -40°F
Tensile Strength (MPa)	≥1.90	2.79
Elongation at break	≥520%	726%
Tearing Strength (N/mm)	≥12	15
Water Impermeability (at 0.3MPa, 30 minute duration)	Impermeable	Impermeable
Solid Content	80+%	95%+
Tack Free Time (Hours) ¹	≤12	≤10
Curing Time (Hours) ²	≤24	≤20

1. Based on controlled tests. Tack free times will vary based on thickness, temperature, humidity and other job conditions.
2. Based on controlled tests. Cure times will vary based on thickness, temperature, humidity and other job conditions

For a complete list of details in CAD or PDF, please visit our website at www.avmindustries.com.

AVM Industries, Inc.
8245 Remmet Ave, Canoga Park, CA 91304
888.414.1041 818.888.0050

Quality Waterproofing Products

www.avmindustries.com



MIN. THICKNESS TABLE & PROTECTION GUIDELINES

Sections - 071000 / 071400 / 071416



AVM Aussie Membrane 520

Aussie Membrane 520

Heavy Duty Below Grade Polyurethane Waterproofing Membrane

Depth Range	Min Thickness of Cured Membrane	Authorized Installer Required	Protection & Drainage System Required
Retaining Walls and Planters			
Up to 4 feet deep	60 Mils	No	Foam Board or AVM Drain Board 6000 + Drainage System
4-8 feet deep	60 Mils	Recommended	AVM Drain Board 6000 + AVM Bottom Drain or French Drain
8-12 feet deep	90 Mils	Recommended	AVM Drain Board 6000 + AVM Bottom Drain or French Drain
Deeper than 12 Feet	90-180+ Mils, Consult with AVM	Recommended	AVM Drain Board 6000 + AVM Bottom Drain or French Drain
Between Slab Waterproofing			
For all applications	90-210 Mils + Fabric Reinforcement. Consult with AVM	Recommended	AVM Drain Board 9000
Under Slab Vapor Barriers			
For all applications	60+ Mils, consult with AVM	Recommended	AVM Drain Board 9000 For Drainage system (if needed), Consult with AVM
Roof Pavers/Pedestals			
For all applications	120-210 Mils + Fabric Reinforcement. Consult with AVM	Yes	AVM Drain Board 6000/9000. Consult with AVM.
Roof Gardens (Green Roofs)			
For all applications	120-210 Mils + Fabric Reinforcement. Consult with AVM	Yes	Consult with AVM

Protection Types

- ▶ Drainage Board: AVM Drain Board 6000 or high compression strength, AVM Drain Board 9000. Refer to details or consult with AVM. Drainage board must cover entire area of Aussie Membrane 520!
- ▶ Drainage System: Use AVM Bottom Drain 12" system, a French Drain system or equal to remove water and release hydrostatic pressure. If using a French Drain system, it must use a min 4" diameter perforated pipe and wrapped in the drainage mat or geotextile fabric.

Notes

1. Mils thickness specifications are for "DRY FILM" thickness
2. AVM Bottom Drain or French Drain systems are not applicable for installations over horizontal surfaces.
3. AVM Bottom Drain or French Drain systems are recommended, but not required for applications less than 24" deep.
4. Concrete Cant strips at 45° are required at cold joints and other horizontal-to-vertical intersections.
5. On vertical applications - "Termination Bars" are required where the drainage mat terminates.

AVM Industries, Inc.
8245 Remmet Ave, Canoga Park, CA 91304
888.414.1041 818.888.0050

Quality Waterproofing Products



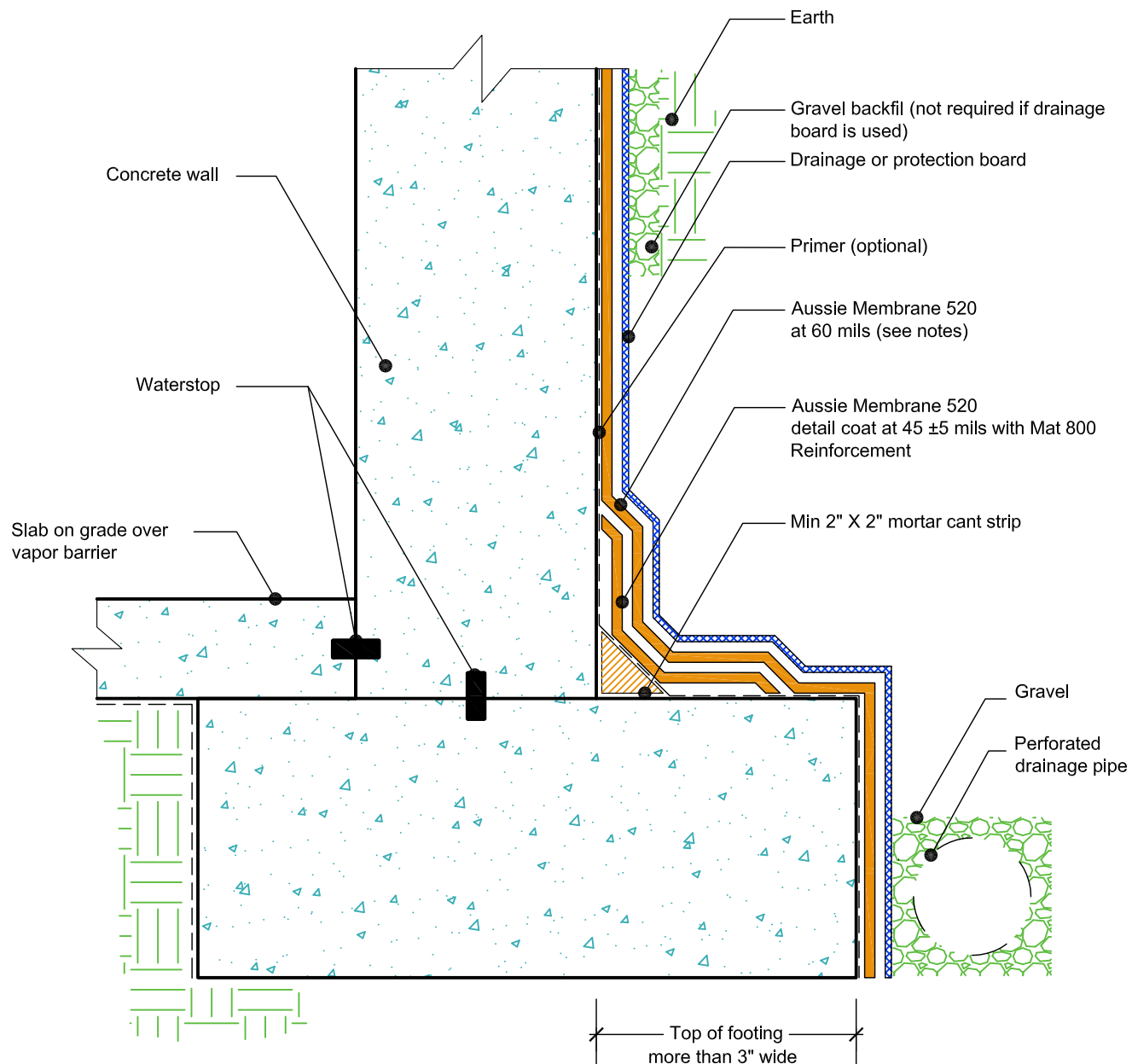
www.avmindustries.com

DETAIL #:
AVM-0520-0002-C

AVM SYSTEM 520

AUSSIE MEMBRANE 520

Retaining Walls
Slab on Grade at Top of Footing
AVM AUSSIE MEMBRANE 520
Fluid Applied Waterproofing.



NOTES:

1. Aussie Membrane 520 is a Polyurethane liquid (Roller or Brush Applied) for Below-Grade, Between-Slab, Planters, Roof-Gardens and similar type Waterproofing.
2. For proper membrane thickness and appropriate protection and drainage, refer to AVM Aussie Membrane 520 "Min Thickness Table"
3. Contact AVM if no drain board or protection board is specified.
4. AVM's "Bottom Drain 12" may be accepted in lieu of the perforated drainage pipe (French Drain). Check local building codes for approval.
5. Exposed top of footing is More than 3"
6. Inside corner (Wall-to-Footing) shown with Water Stop
7. Reinforce the Aussie Membrane 520 with AVM Mat 800 at all corners, metal transitions, penetrations, gaps, drains, etc.
8. Mortar cant strip and detail coat at the cold joint may be replaced with other cold joint details with prior approval from AVM.

AVM Industries, Inc.
8245 Remmet Ave, Canoga Park, CA 91304

Quality Waterproofing Products

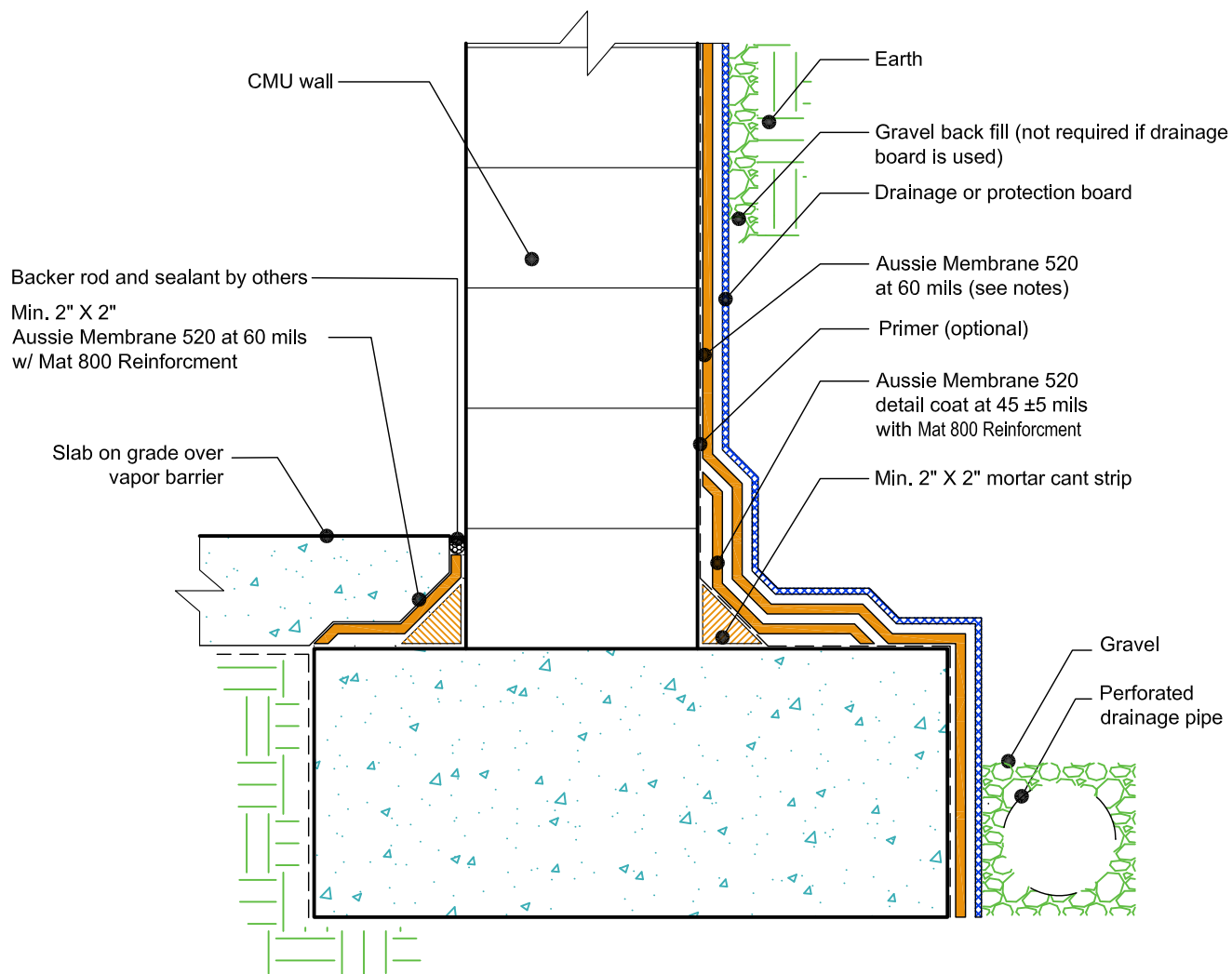
888.414.1041 818.888.0050
www.avmindustries.com

DETAIL #:
AVM-0520-0004-C

AVM SYSTEM 520

AUSSIE MEMBRANE 520

Retaining Walls
Slab on Grade at Top of Footing
AVM AUSSIE MEMBRANE 520
Fluid Applied Waterproofing.



NOTES:

1. Aussie Membrane 520 is a Polyurethane liquid (Roller or Brush Applied) for Below-Grade, Between-Slab, Planters, Roof-Gardens and similar type Waterproofing.
2. For proper membrane thickness and appropriate protection and drainage, refer to AVM Aussie Membrane 520 "Min Thickness Table"
3. Contact AVM if no drain board or protection board is specified.
4. AVM's "Bottom Drain 12" may be accepted in lieu of the perforated drainage pipe (French Drain). Check local building codes for approval.
5. Inside corner (Wall-to-Footing) shown with Aussie Membrane 520 corner detail
6. Reinforce the Aussie Membrane 520 with AVM Mat 800 at all corners, metal transitions, penetrations, gaps, drains, etc.
7. Mortar cant strip and detail coat at the cold joint may be replaced with other cold joint details with prior approval from AVM.

AVM Industries, Inc.
8245 Remmet Ave, Canoga Park, CA 91304

Quality Waterproofing Products

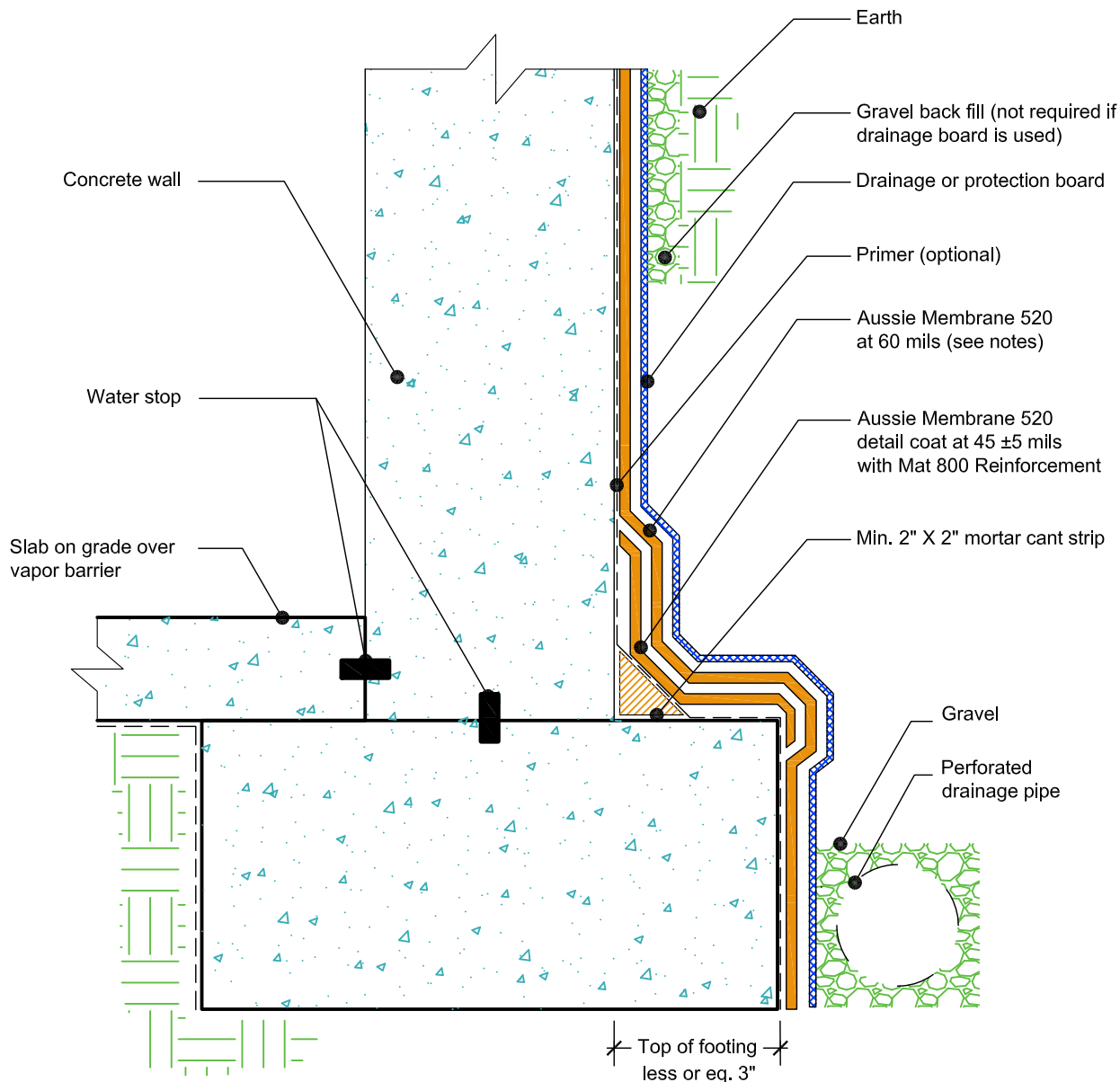
888.414.1041 818.888.0050
www.avmindustries.com

DETAIL #:
AVM-0520-0006-C

AVM SYSTEM 520

AUSSIE MEMBRANE 520

Retaining Walls
Slab on Grade at Top of Footing
AVM AUSSIE MEMBRANE 520
Fluid Applied Waterproofing.



NOTES:

1. Aussie Membrane 520 is a Polyurethane liquid (Roller or Brush Applied) for Below-Grade, Between-Slab, Planters, Roof-Gardens and similar type Waterproofing.
2. For proper membrane thickness and appropriate protection and drainage, refer to AVM Aussie Membrane 520 "Min Thickness Table"
3. Contact AVM if no drain board or protection board is specified.
4. AVM's "Bottom Drain 12" may be accepted in lieu of the perforated drainage pipe (French Drain). Check local building codes for approval.
5. Exposed top of footing is Less than 3"
6. Inside corner (Wall-to-Footing) shown with Water Stop
7. Reinforce the Aussie Membrane 520 with AVM Mat 800 at all corners, metal transitions, penetrations, gaps, drains, etc.
8. Mortar cant strip and detail coat at the cold joint may be replaced with other cold joint details with prior approval from AVM.

AVM Industries, Inc.
8245 Remmet Ave, Canoga Park, CA 91304

Quality Waterproofing Products

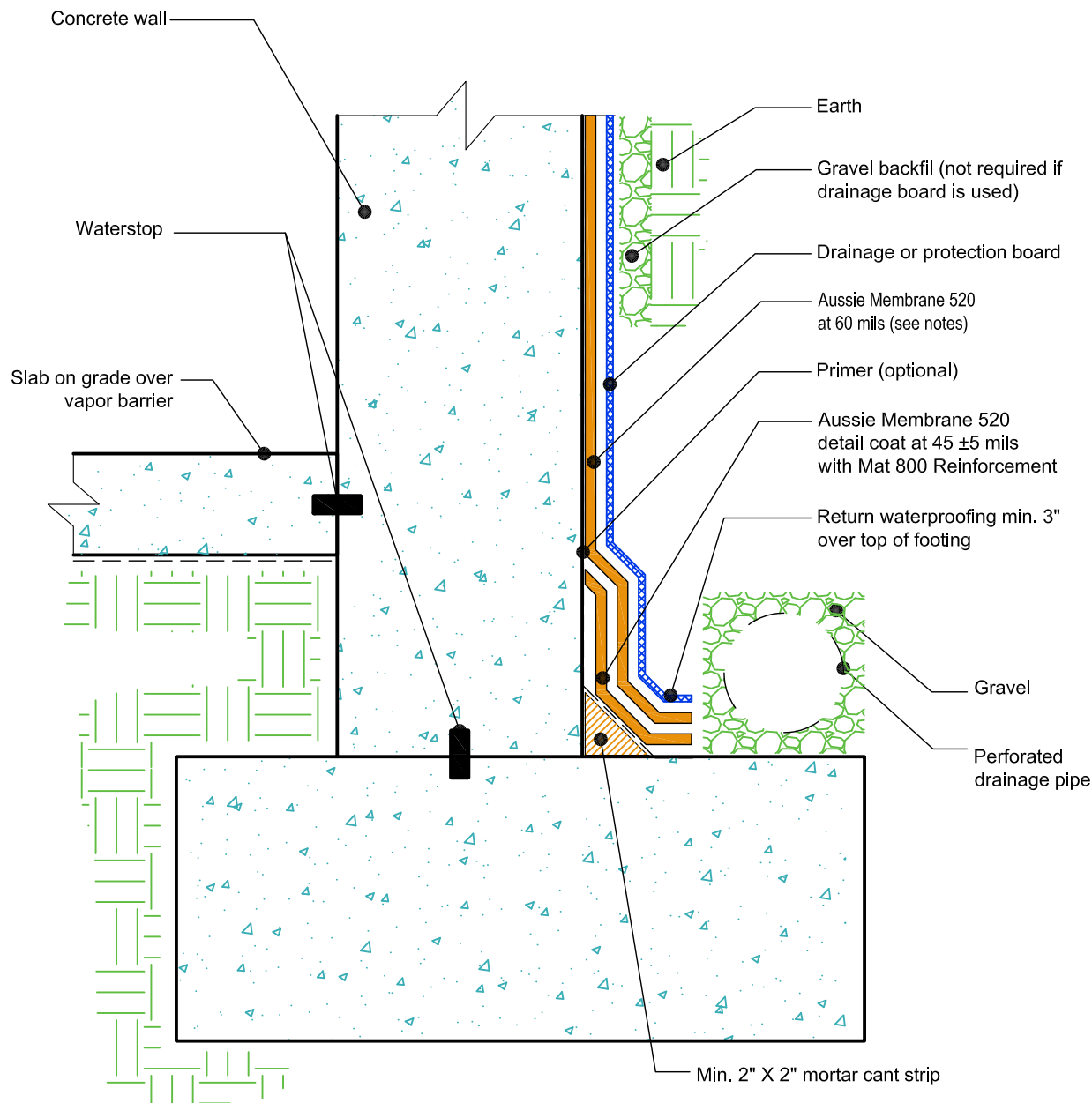
888.414.1041 818.888.0050
www.avmindustries.com

DETAIL #:
AVM-0520-0008-C

AVM SYSTEM 520

AUSSIE MEMBRANE 520

Retaining Walls
Elevated Slab on Grade at Top of Footing
AVM AUSSIE MEMBRANE 520
Fluid Applied Waterproofing.



NOTES:

1. Aussie Membrane 520 is a Polyurethane liquid (Roller or Brush Applied) for Below-Grade, Between-Slab, Planters, Roof-Gardens and similar type Waterproofing.
2. For proper membrane thickness and appropriate protection and drainage, refer to AVM Aussie Membrane 520 "Min Thickness Table"
3. Contact AVM if no drain board or protection board is specified.
4. AVM's "Bottom Drain 12" may be accepted in lieu of the perforated drainage pipe (French Drain). Check local building codes for approval.
5. Inside corner (Wall-to-Footing) shown with Water Stop
6. Reinforce the Aussie Membrane 520 with AVM Mat 800 at all corners, metal transitions, penetrations, gaps, drains, etc.
7. Mortar cant strip and detail coat at the cold joint may be replaced with other cold joint details with prior approval from AVM.

AVM Industries, Inc.
8245 Remmet Ave, Canoga Park, CA 91304

Quality Waterproofing Products

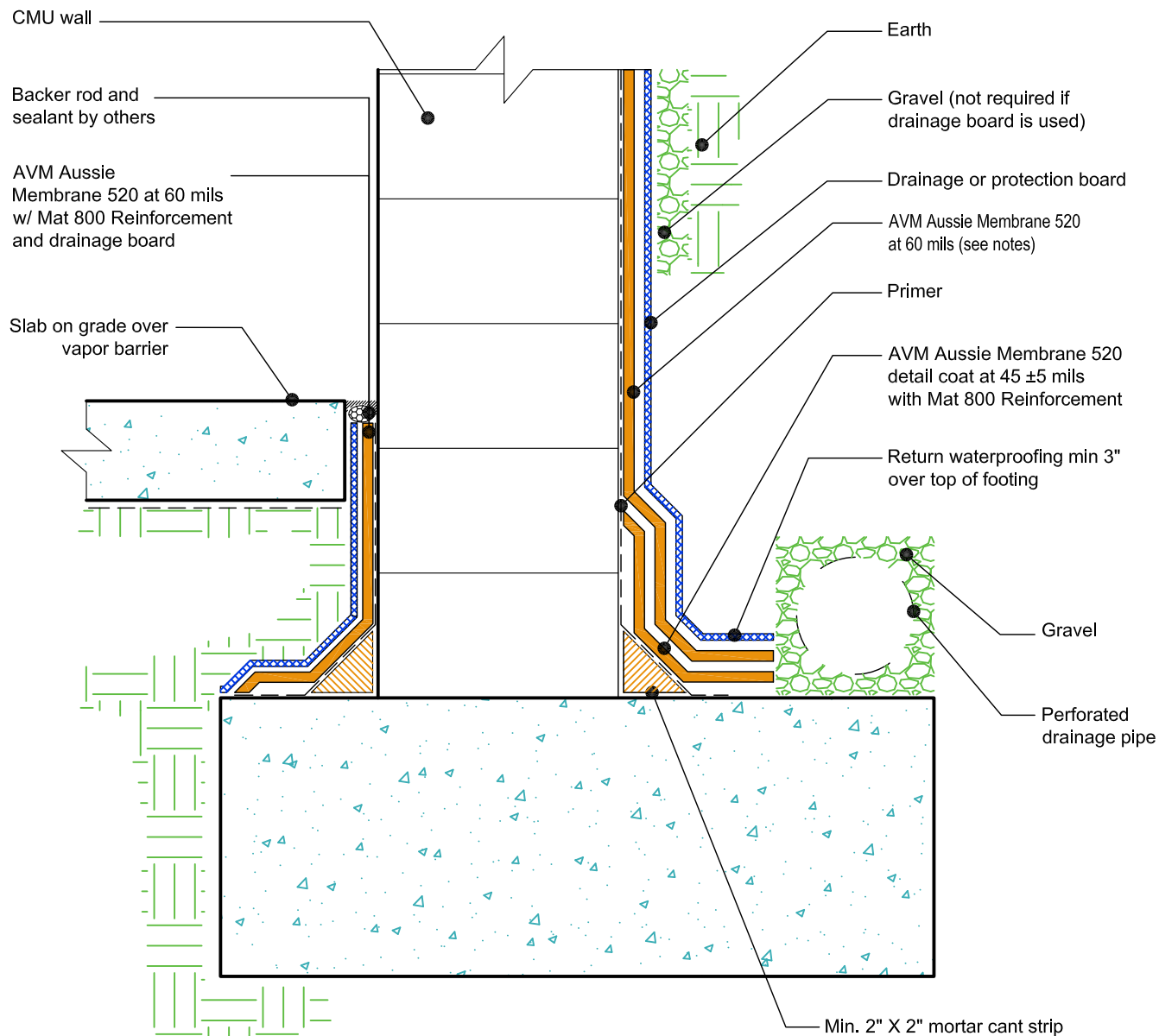
888.414.1041 818.888.0050
www.avmindustries.com

DETAIL #:
AVM-0520-0010-C

AVM SYSTEM 520

AUSSIE MEMBRANE 520

Retaining Walls
Elevated Slab on Grade at Top of Footing
AVM AUSSIE MEMBRANE 520
Fluid Applied Waterproofing.



NOTES:

1. Aussie Membrane 520 is a Polyurethane liquid (Roller or Brush Applied) for Below-Grade, Between-Slab, Planters, Roof-Gardens and similar type Waterproofing.
2. For proper membrane thickness and appropriate protection and drainage, refer to AVM Aussie Membrane 520 "Min Thickness Table"
3. Contact AVM if no drain board or protection board is specified.
4. AVM's "Bottom Drain 12" may be accepted in lieu of the perforated drainage pipe (French Drain). Check local building codes for approval.
5. Inside corner (Wall-to-Footing) shown with Aussie Membrane 520 corner detail
6. Reinforce the Aussie Membrane 520 with AVM Mat 800 at all corners, metal transitions, penetrations, gaps, drains, etc.
7. Mortar cant strip and detail coat at the cold joint may be replaced with other cold joint details with prior approval from AVM.

AVM Industries, Inc.
8245 Remmet Ave, Canoga Park, CA 91304

Quality Waterproofing Products

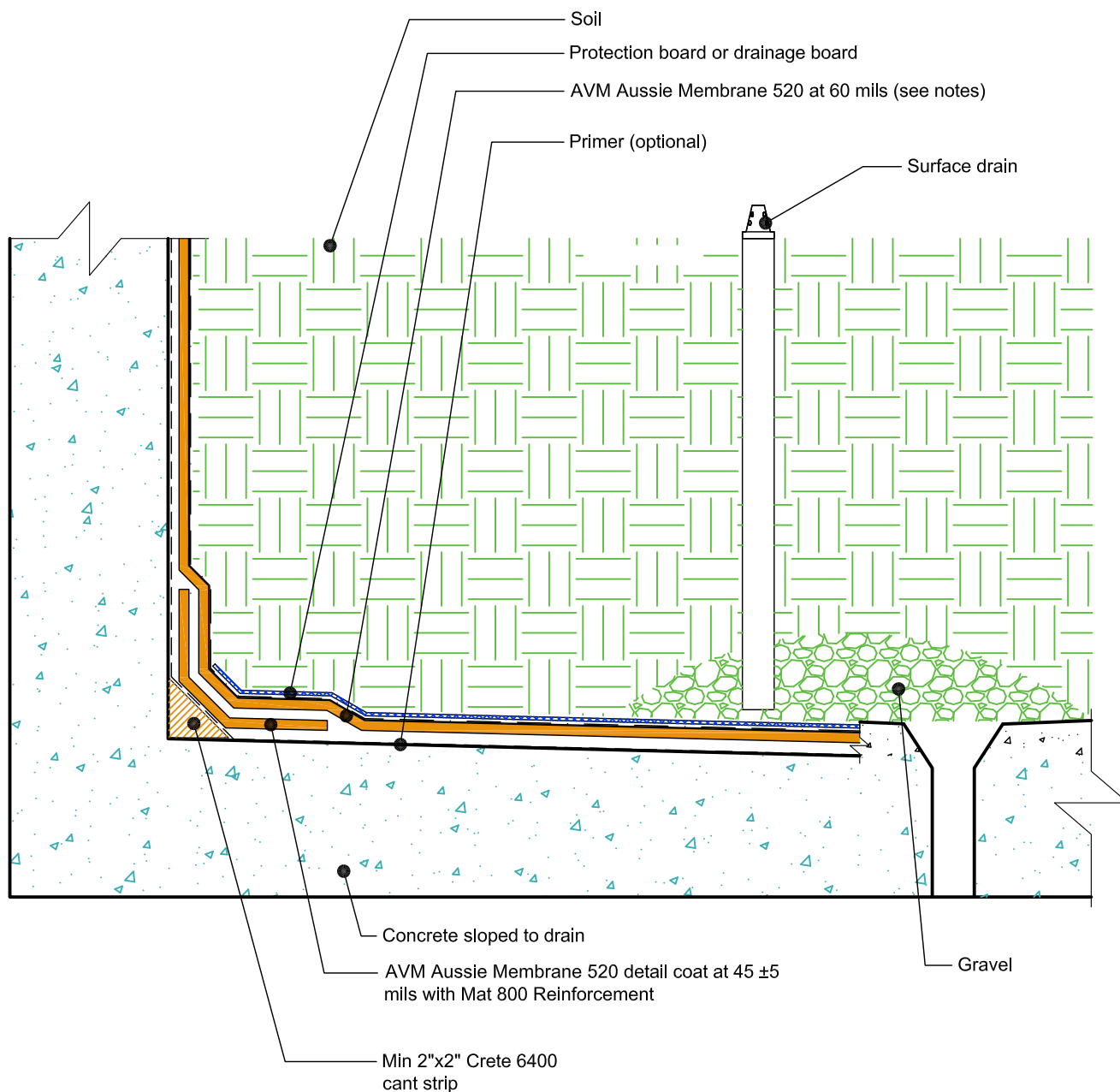
888.414.1041 818.888.0050
www.avmindustries.com

DETAIL #:
AVM-0520-1502-C

AVM SYSTEM 520

AUSSIE MEMBRANE 520

Planter Basic Detail
AVM AUSSIE MEMBRANE 520
Fluid Applied Waterproofing.



NOTES:

1. Aussie Membrane 520 is a Polyurethane liquid (Roller or Brush Applied) for Below-Grade, Between-Slab, Planters, Roof-Gardens and similar type Waterproofing.
2. For proper membrane thickness and appropriate protection and drainage, refer to AVM Aussie Membrane 520 "Min Thickness Table"
3. Contact AVM if no drain board or protection board is specified.
4. Planters must have sufficient slope, sufficient drains and proper drainage systems to effectively evacuate excessive water.
5. Reinforce the Aussie Membrane 520 with AVM Mat 800 at all corners, metal transitions, penetrations, gaps, drains, etc.
6. Mortar cant strip and detail coat at the cold joint may be replaced with other cold joint details with prior approval from AVM.

AVM Industries, Inc.
8245 Remmet Ave, Canoga Park, CA 91304

Quality Waterproofing Products

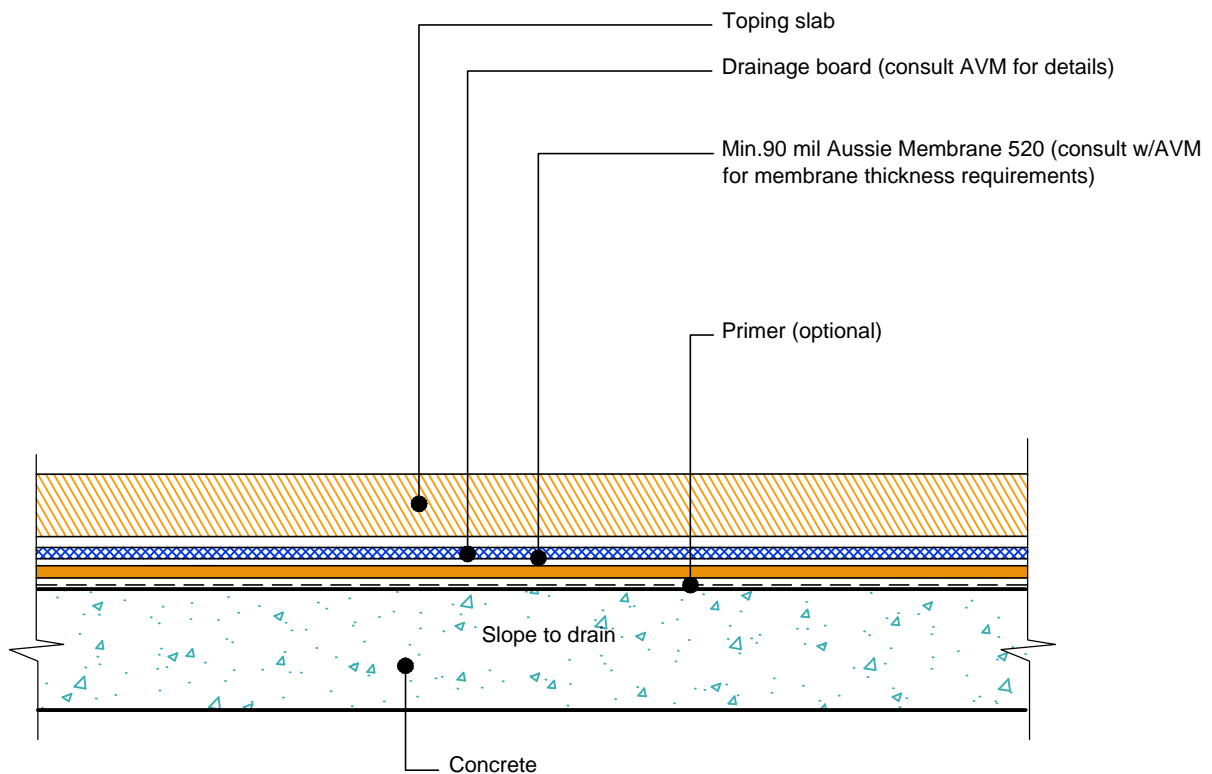
888.414.1041 818.888.0050
www.avmindustries.com

DETAIL #:
AVM-0520-2001-C

AVM SYSTEM 520

AUSSIE MEMBRANE 520

Topping on Slab on Concrete Substrate
over AVM AUSSIE MEMBRANE 520
Fluid Applied Waterproofing.



NOTES:

1. Aussie Membrane 520 is a Polyurethane liquid (Roller or Brush Applied) for Below-Grade, Between-Slab, Planters, Roof-Gardens and similar type Waterproofing.
2. For proper membrane thickness and appropriate protection and drainage, refer to AVM Aussie Membrane 520 "Min Thickness Table"
3. Contact AVM if no drain board or protection board is specified.
4. For drainage and protection on topping Slabs up to 4" thick for pedestrian applications, use AVM Drain Board 6000.
5. For drainage and protection on topping slabs over 4" thick or for vehicular applications, use AVM Drain Board 9000.

AVM Industries, Inc.
8245 Remmet Ave, Canoga Park, CA 91304

Quality Waterproofing Products

888.414.1041 818.888.0050
www.avmindustries.com

FILE NAME: 0520-2001-C-Topping-Slab-On-Concrete-CS

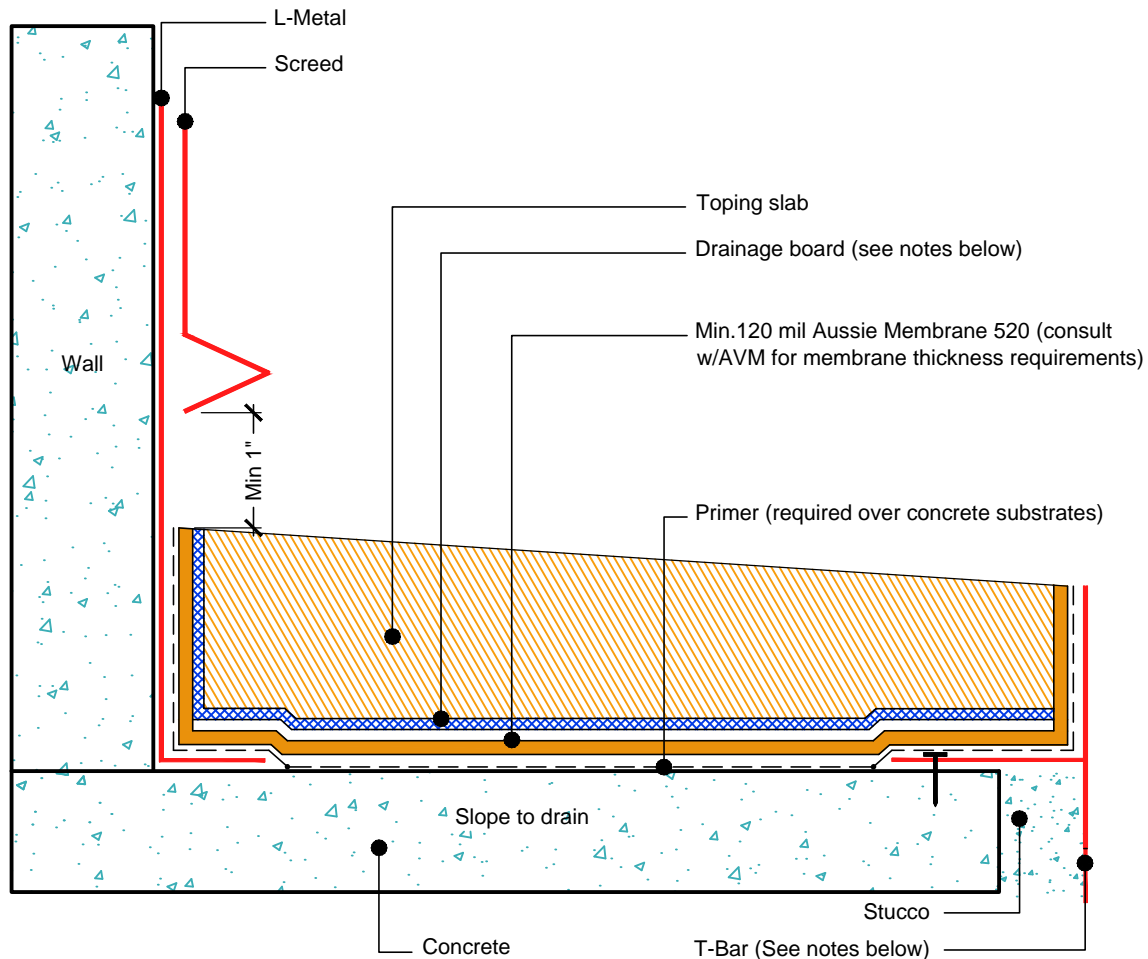
Revision Date: 5/31/2016
Protected by Copyright @ AVM Industries, Inc.

DETAIL #:
AVM-0520-2002-C

AVM SYSTEM 520

AUSSIE MEMBRANE 520

Topping Slab on Concrete Substrate
over AVM AUSSIE MEMBRANE 520
with Drain Board, Fluid Applied
Waterproofing (Heavy Duty).



NOTES:

1. Aussie Membrane 520 is a Polyurethane liquid (Roller or Brush Applied) for Below-Grade, Between-Slab, Planters, Roof-Gardens and similar type Waterproofing.
2. For proper membrane thickness and appropriate protection and drainage, refer to AVM Aussie Membrane 520 "Min Thickness Table"
3. Contact AVM if no drain board or protection board is specified.
4. For drainage and protection on topping Slabs up to 4" thick for pedestrian applications, use AVM Drain Board 6000.
5. For drainage and protection on topping slabs over 4" thick or for vehicular applications, use AVM Drain Board 9000.
6. This assembly is for pedestrian traffic use only. For vehicular applications and other heavy loads, contact AVM for approval.
7. Reinforce the Aussie Membrane 520 with AVM Mat 800 at all corners, metal transitions, penetrations, gaps, drains, etc.
8. Mortar cant strip and detail coat at the cold joint may be replaced with other cold joint details with prior approval from AVM.
9. Many edge details are possible. All must allow for proper water evacuation. (None should trap water) Consult AVM for details.

AVM Industries, Inc.
8245 Remmet Ave, Canoga Park, CA 91304

Quality Waterproofing Products

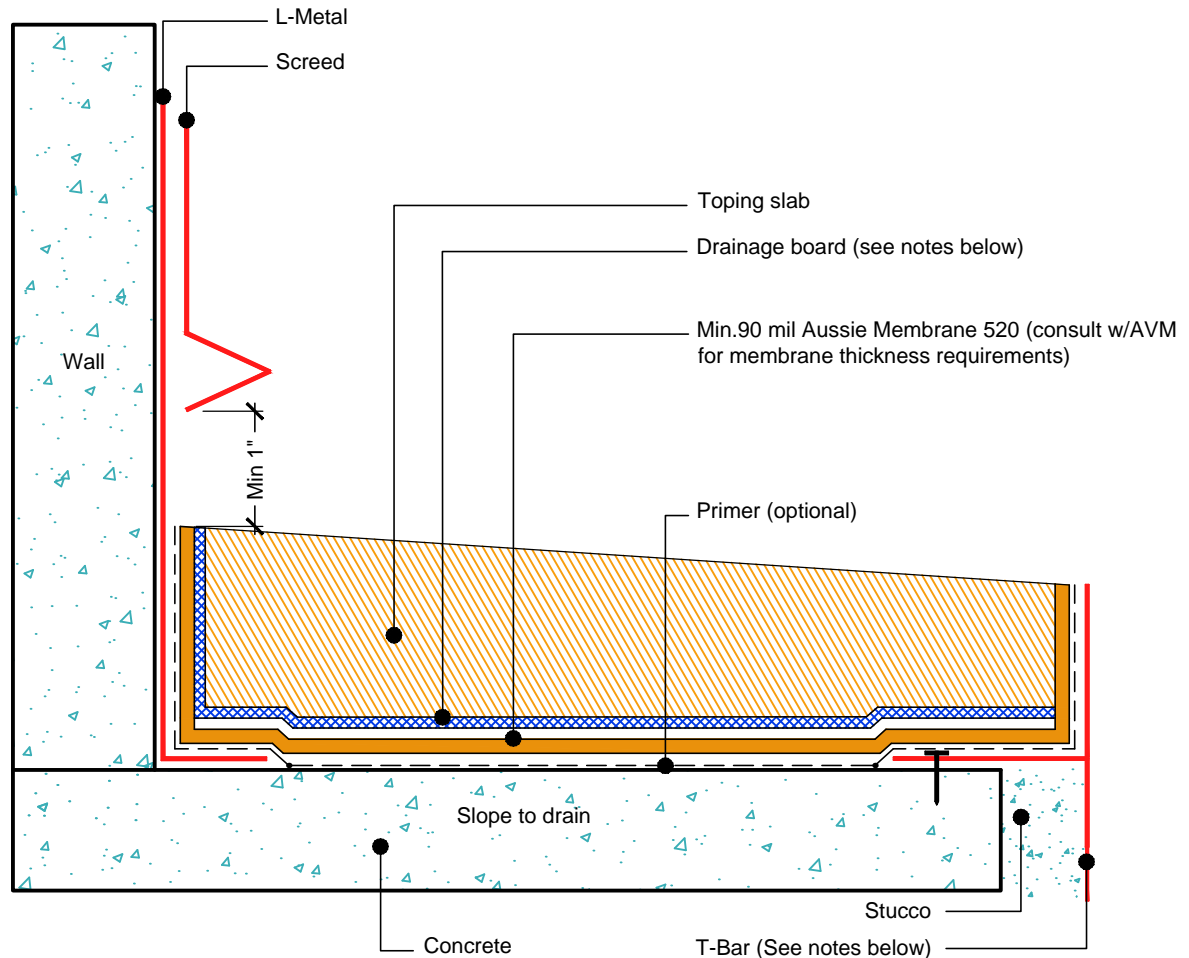
888.414.1041 818.888.0050
www.avmindustries.com

DETAIL #:
AVM-0520-2022-C

AVM SYSTEM 520

AUSSIE MEMBRANE 520

Topping Slab on Concrete Substrate
over AVM AUSSIE MEMBRANE 520
with Drain Board, Fluid Applied
Waterproofing (Medium Duty).



- NOTES:**
1. Aussie Membrane 520 is a Polyurethane liquid (Roller or Brush Applied) for Below-Grade, Between-Slab, Planters, Roof-Gardens and similar type Waterproofing.
 2. For proper membrane thickness and appropriate protection and drainage, refer to AVM Aussie Membrane 520 "Min Thickness Table"
 3. Contact AVM if no drain board or protection board is specified.
 4. For drainage and protection on topping Slabs up to 4" thick for pedestrian applications, use AVM Drain Board 6000.
 5. For drainage and protection on topping slabs over 4" thick or for vehicular applications, use AVM Drain Board 9000.
 6. This assembly is for pedestrian traffic use only. For vehicular applications and other heavy loads, contact AVM for approval.
 7. Reinforce the Aussie Membrane 520 with AVM Mat 800 at all corners, metal transitions, penetrations, gaps, drains, etc.
 8. Mortar cant strip and detail coat at the cold joint may be replaced with other cold joint details with prior approval from AVM.
 9. Many edge details are possible. All must allow for proper water evacuation. (None should trap water) Consult AVM for details.

AVM Industries, Inc.
8245 Remmet Ave, Canoga Park, CA 91304

Quality Waterproofing Products

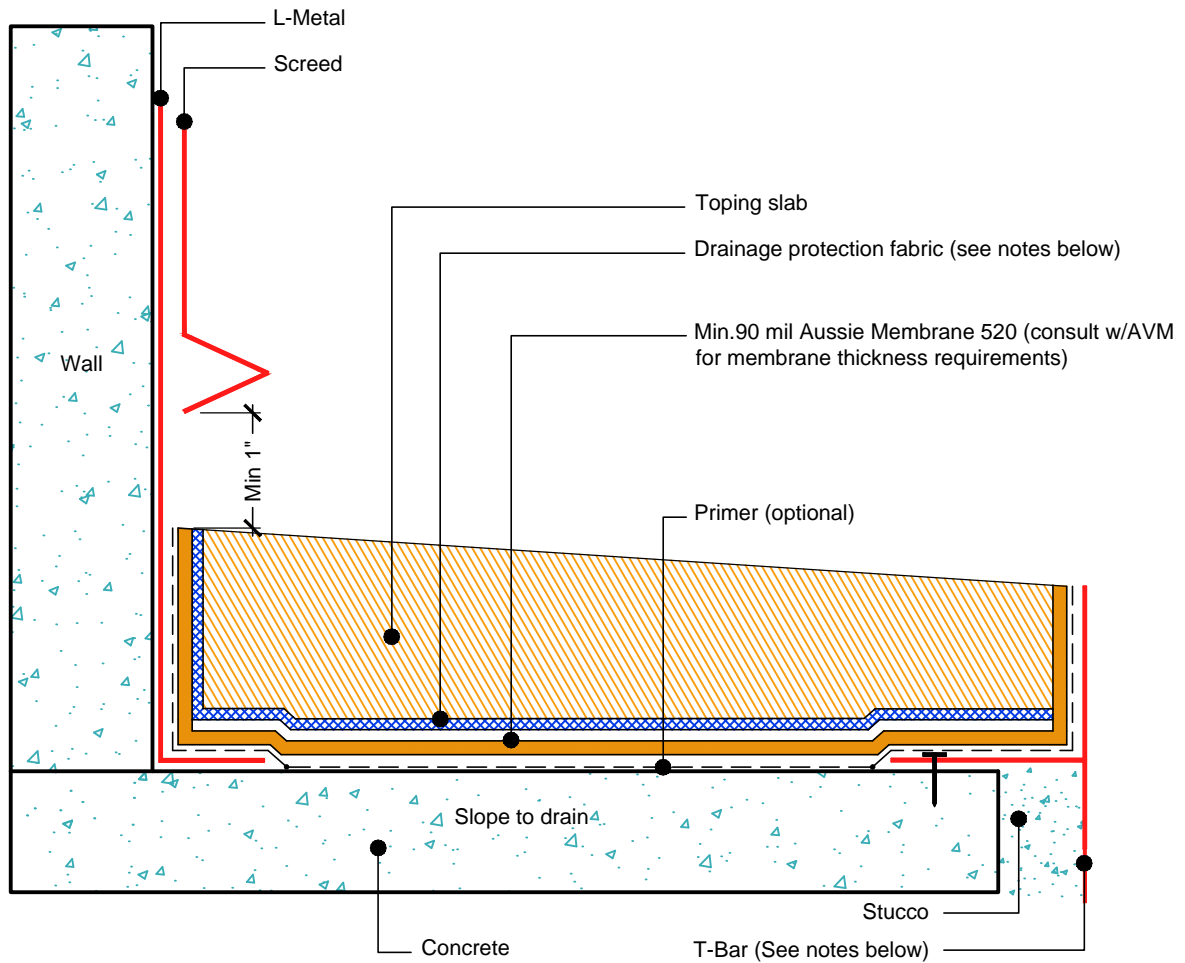
888.414.1041 818.888.0050
www.avmindustries.com

DETAIL #:
AVM-0520-2042-C

AVM SYSTEM 520

AUSSIE MEMBRANE 520

Topping Slab on Concrete Substrate
over AVM AUSSIE MEMBRANE 520
with Drainage Fabric, Fluid Applied
Waterproofing (Light Duty).



NOTES:

1. Aussie Membrane 520 is a Polyurethane liquid (Roller or Brush Applied) for Below-Grade, Between-Slab, Planters, Roof-Gardens and similar type Waterproofing.
2. For proper membrane thickness and appropriate protection and drainage, refer to AVM Aussie Membrane 520 "Min Thickness Table"
3. Contact AVM if no drain board or protection board is specified.
4. For drainage/protection, use AVM Drainage & Protection Fabric DPF-16. For topping slabs over 4" thick or vehicular applications, use AVM Drain Board 9000.
5. This assembly is for pedestrian traffic use only. For vehicular applications and other heavy loads, contact AVM for approval.
6. Reinforce the Aussie Membrane 520 with AVM Mat 800 at all corners, metal transitions, penetrations, gaps, drains, etc.
7. Many edge details are possible. All must allow for proper water evacuation. (None should trap water) Consult AVM for details.

AVM Industries, Inc.
8245 Remmet Ave, Canoga Park, CA 91304

Quality Waterproofing Products

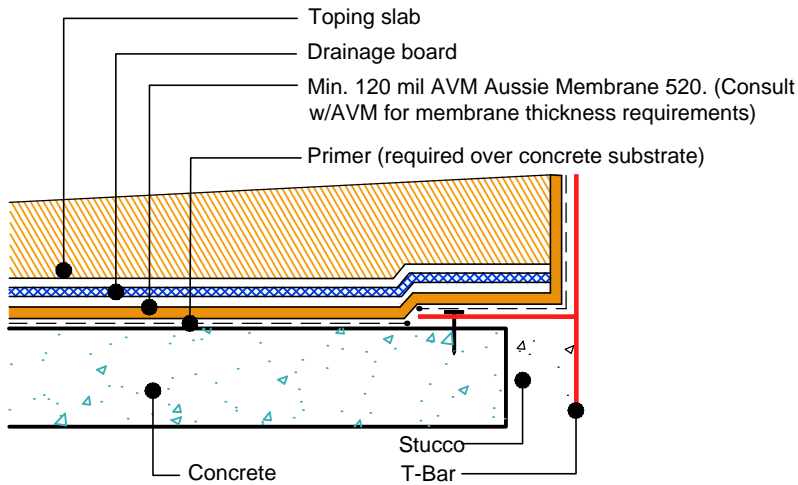
888.414.1041 818.888.0050
www.avmindustries.com

DETAIL #:
AVM-0520-2072-C

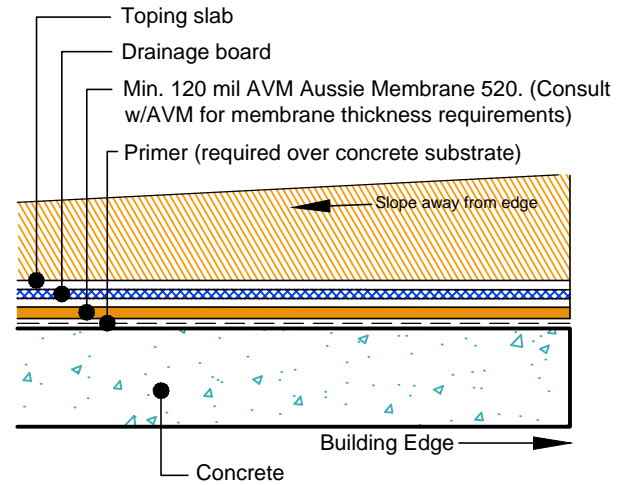
AVM SYSTEM 520

AUSSIE MEMBRANE 520

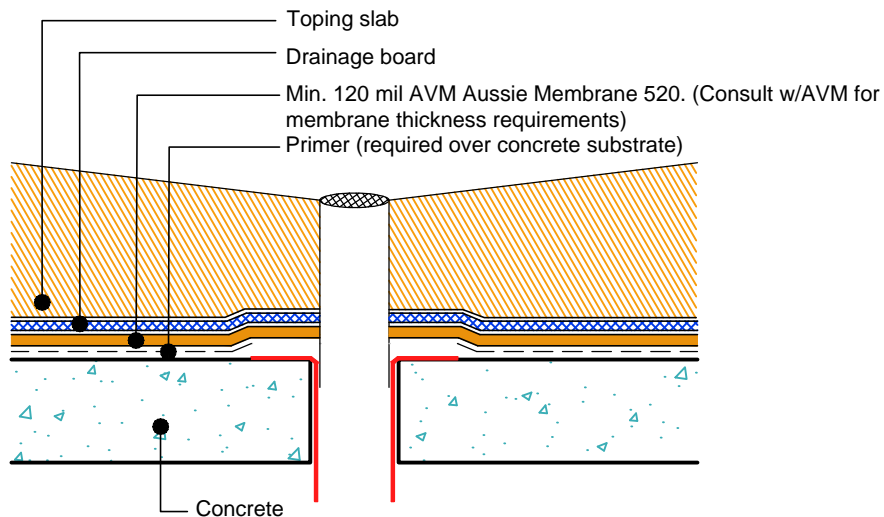
Other Edge and Drain Details Topping Slabs
Waterproofing on Concrete Substrates
AVM AUSSIE MEMBRANE 520
Fluid Applied Waterproofing. (Heavy Duty)



Slope Away from Edge Detail with Edge Metals
Heavy Duty



Slope Away from Edge Detail without Edge Metals
Heavy Duty



Drain Detail on Concrete
Heavy Duty

NOTES:

1. See drawing and notes on detail number AVM-520-2002-C for more information.
2. If water is to drain away from the edge into area floor drains, then edge metals do not require weep holes.
3. Reinforce the Aussie Membrane with AVM Mat 800 at all corners, metal transitions, penetrations, gaps, drains, etc.
4. A 2-part concrete drain with a bowl and a flange and built-in weep holes should be used. (Consult AVM for proper drain selection)

AVM Industries, Inc.
8245 Remmet Ave, Canoga Park, CA 91304

Quality Waterproofing Products

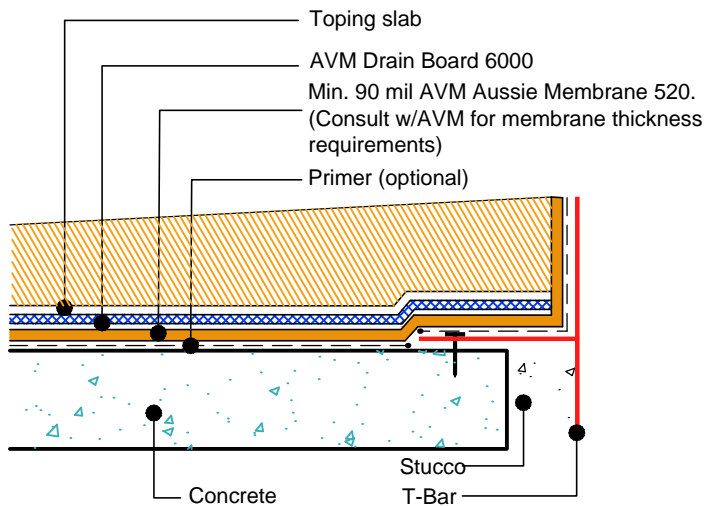
888.414.1041 818.888.0050
www.avmindustries.com

DETAIL #:
AVM-0520-2074-C

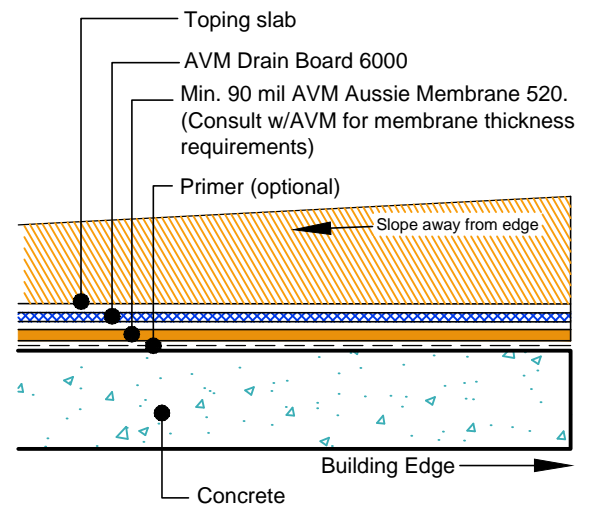
AVM SYSTEM 520

AUSSIE MEMBRANE 520

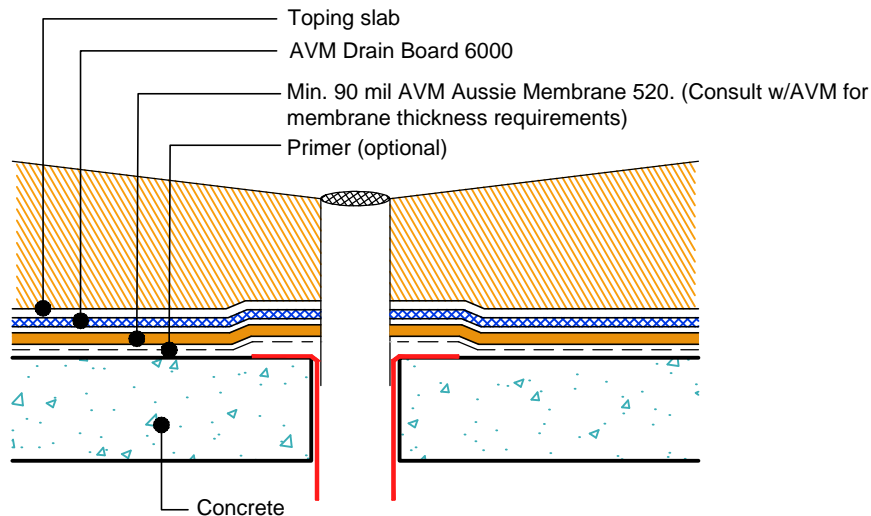
Other Edge and Drain Details Topping Slabs
Waterproofing on Concrete Substrates
AVM AUSSIE MEMBRANE 520
Fluid Applied Waterproofing. (Medium Duty)



Slope Away from Edge Detail with Edge Metals
Medium Duty



Slope Away from Edge Detail without Edge Metals
Medium Duty



Drain Detail on Concrete
Medium Duty

NOTES:

1. See drawing and notes on detail number AVM-520-2022-C for more information.
2. If water is to drain away from the edge into area floor drains, then edge metals do not require weep holes.
3. Reinforce the Aussie Membrane with AVM Mat 800 at all corners, metal transitions, penetrations, gaps, drains, etc.
4. A 2-part concrete drain with a bowl and a flange and built-in weep holes should be used. (Consult AVM for proper drain selection)

AVM Industries, Inc.
8245 Remmet Ave, Canoga Park, CA 91304

Quality Waterproofing Products

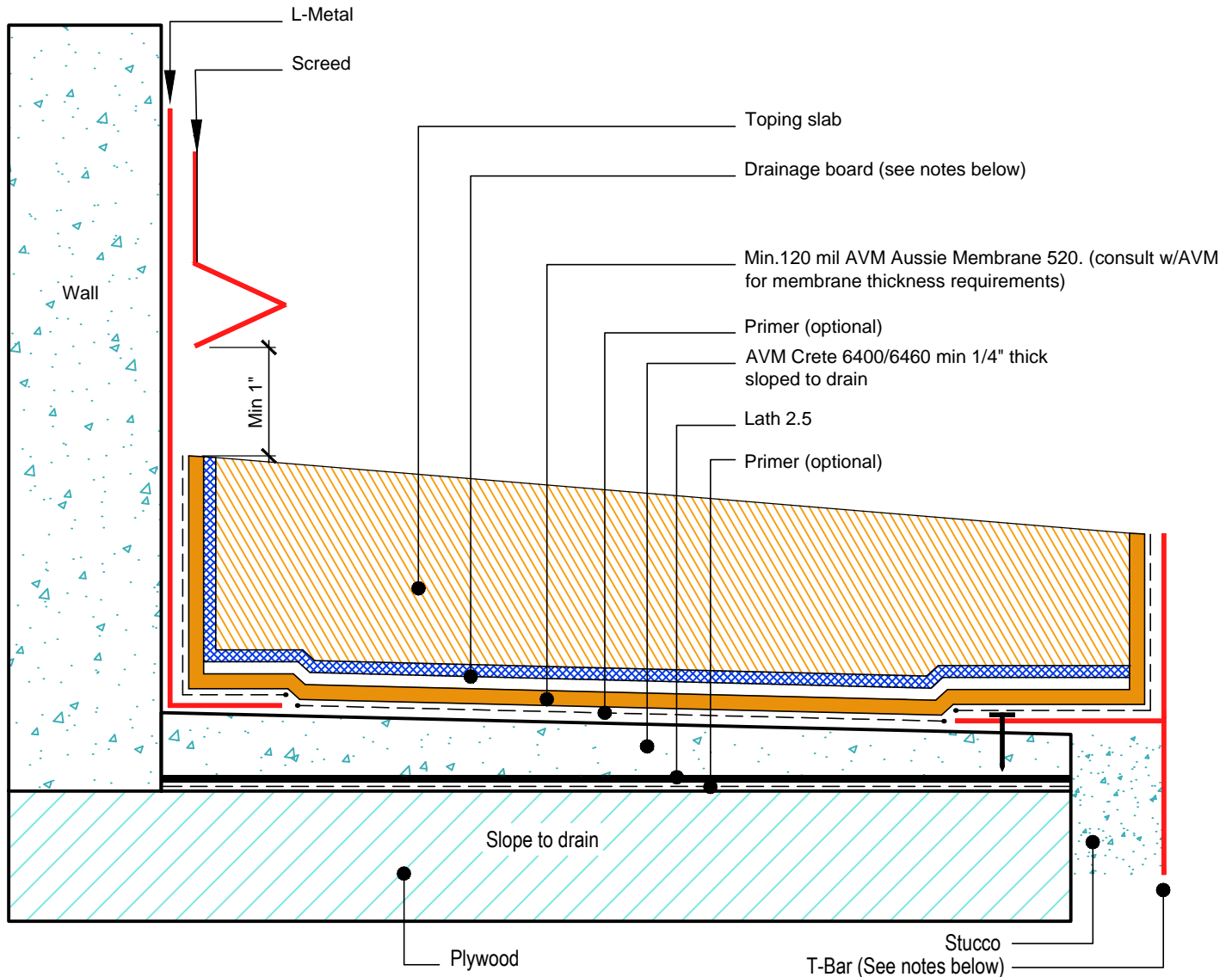
888.414.1041 818.888.0050
www.avmindustries.com

DETAIL #:
AVM-0520-2502-P

AVM SYSTEM 520

AUSSIE MEMBRANE 520

Topping Slab on Plywood Substrate over
AVM AUSSIE MEMBRANE 520
with Drain Board & Thin Crete Base, Fluid
Applied Waterproofing (Heavy Duty)
Concrete under Metals



NOTES:

1. Aussie Membrane 520 is a Polyurethane liquid (Roller or Brush Applied) for Below-Grade, Between-Slab, Planters, Roof-Gardens and similar type Waterproofing.
2. For proper membrane thickness and appropriate protection and drainage, refer to AVM Aussie Membrane 520 "Min Thickness Table"
3. Contact AVM if no drain board or protection board is specified.
4. Crete 6400/6460. Refer to the Crete 6400 or Crete 6460 Technical Data Sheets or Installation Instructions for more info.
5. For drainage and protection on topping Slabs up to 4" thick for pedestrian applications, use AVM Drain Board 6000.
6. For drainage and protection on topping slabs over 4" thick or for vehicular applications, use AVM Drain Board 9000.
7. This assembly is for pedestrian traffic use only. For vehicular applications and other heavy loads, contact AVM for approval.
8. Substrates must be sloped to drains and/or edges before membrane installation. (Min 1/4" per foot)
9. If water is to drain over the edge, then edge metals MUST have sufficient weep holes (at least every 6") and must be strong enough (thick enough) to act as a concrete form.
10. Many edge details are possible. All must allow for proper water evacuation. (None should trap water) Consult AVM for details.
11. Reinforce the Aussie Membrane 520 with AVM Mat 800 at all corners, metal transitions, penetrations, gaps, drains, etc.

AVM Industries, Inc.
8245 Remmet Ave, Canoga Park, CA 91304

Quality Waterproofing Products

888.414.1041 818.888.0050
www.avmindustries.com

FILE NAME: 0520-2502-P-Topping-Slab-On-Plywood-HD-CS

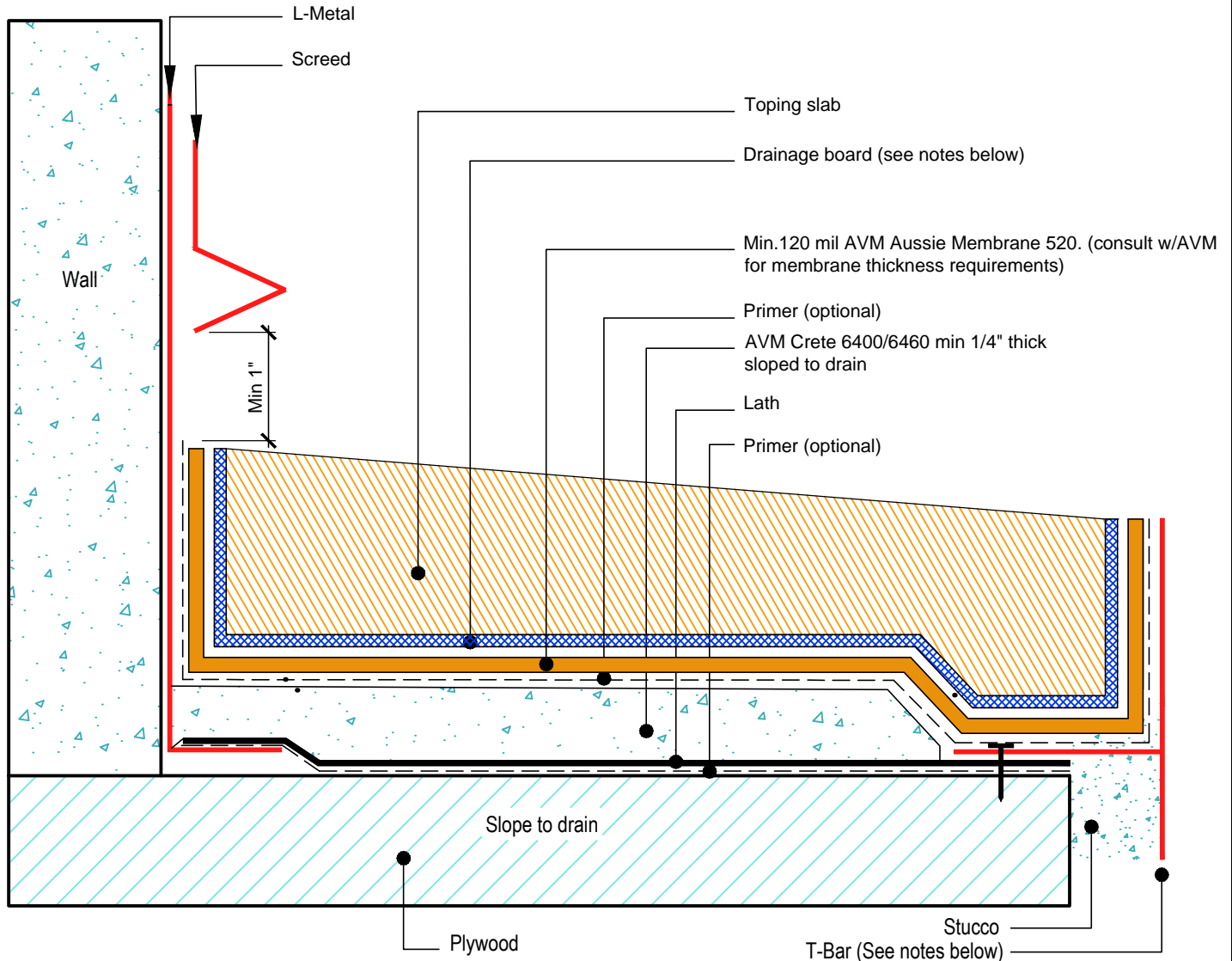
Revision Date: 5/31/2016
Protected by Copyright © AVM Industries, Inc.

DETAIL #:
AVM-0520-2504-P

AVM SYSTEM 520

AUSSIE MEMBRANE 520

Topping Slab on Plywood Substrate over
AVM AUSSIE MEMBRANE 520
with Drain Board & Thin Crete Base, Fluid
Applied Waterproofing (Heavy Duty)
Concrete over Metals



NOTES:

1. Aussie Membrane 520 is a Polyurethane liquid (Roller or Brush Applied) for Below-Grade, Between-Slab, Planters, Roof-Gardens and similar type Waterproofing.
2. For proper membrane thickness and appropriate protection and drainage, refer to AVM Aussie Membrane 520 "Min Thickness Table"
3. Contact AVM if no drain board or protection board is specified.
4. Crete 6400/6460. Refer to the Crete 6400 or Crete 6460 Technical Data Sheets or Installation Instructions for more info.
5. For drainage and protection on topping Slabs up to 4" thick for pedestrian applications, use AVM Drain Board 6000.
6. For drainage and protection on topping slabs over 4" thick or for vehicular applications, use AVM Drain Board 9000.
7. This assembly is for pedestrian traffic use only. For vehicular applications and other heavy loads, contact AVM for approval.
8. Substrates must be sloped to drains and/or edges before membrane installation. (Min 1/4" per foot)
9. If water is to drain over the edge, then edge metals MUST have sufficient weep holes (at least every 6") and must be strong enough (thick enough) to act as a concrete form.
10. Many edge details are possible. All must allow for proper water evacuation. (None should trap water) Consult AVM for details.
11. Reinforce the Aussie Membrane 520 with AVM Mat 800 at all corners, metal transitions, penetrations, gaps, drains, etc.

AVM Industries, Inc.
8245 Remmet Ave, Canoga Park, CA 91304

Quality Waterproofing Products

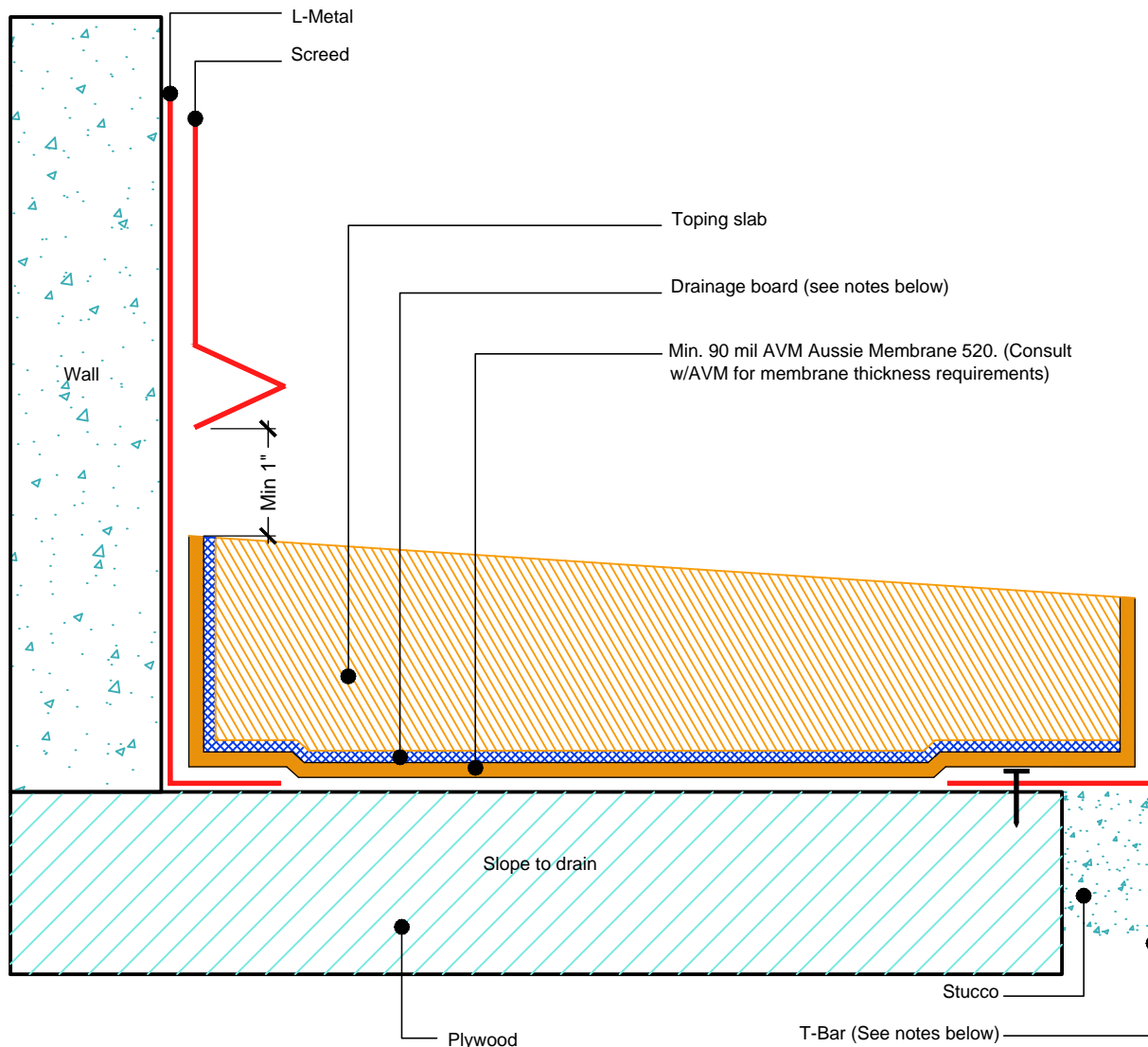
888.414.1041 818.888.0050
www.avmindustries.com

DETAIL #:
AVM-0520-2522-P

AVM SYSTEM 520

AUSSIE MEMBRANE 520

Topping Slab on Plywood Substrate over
AVM AUSSIE MEMBRANE 520
with Drain Board, Fluid Applied
Waterproofing (Medium Duty)



NOTES:

1. Aussie Membrane 520 is a Polyurethane liquid (Roller or Brush Applied) for Below-Grade, Between-Slab, Planters, Roof-Gardens and similar type Waterproofing.
2. For proper membrane thickness and appropriate protection and drainage, refer to AVM Aussie Membrane 520 "Min Thickness Table"
3. Contact AVM if no drain board or protection board is specified.
4. For drainage and protection on topping Slabs up to 4" thick for pedestrian applications, use AVM Drain Board 6000.
5. For drainage and protection on topping slabs over 4" thick or for vehicular applications, use AVM Drain Board 9000.
6. This assembly is for pedestrian traffic use only. For vehicular applications and other heavy loads, contact AVM for approval.
7. Substrates must be sloped to drains and/or edges before membrane installation. (Min 1/4" per foot)
8. If water is to drain over the edge, then edge metals MUST have sufficient weep holes (at least every 6") and must be strong enough (thick enough) to act as a concrete form.
9. Many edge details are possible. All must allow for proper water evacuation. (None should trap water) Consult AVM for details.
10. Make sure all nails are flush with the plywood surface or slightly sunken in below it. (Nails protruding above the plywood surface may puncture the membrane)
11. Reinforce the Aussie Membrane 520 with AVM Mat 800 at all plywood joints, corners, metal transitions, penetrations, drains, etc.

AVM Industries, Inc.
8245 Remmet Ave, Canoga Park, CA 91304

Quality Waterproofing Products

888.414.1041 818.888.0050
www.avmindustries.com

FILE NAME: 0520-2522-P-Topping-Slab-On-Plywood-MD-CS

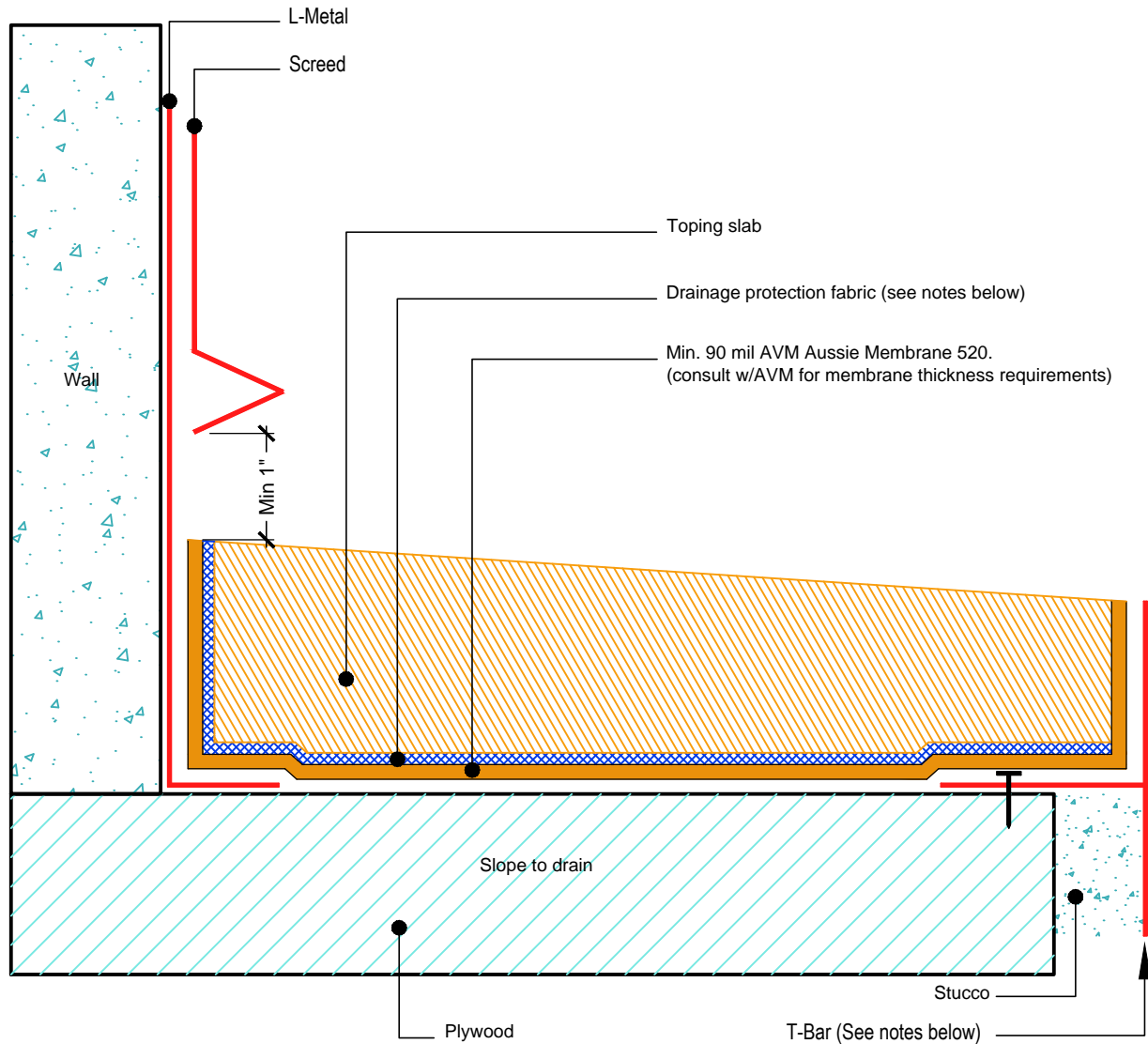
Revision Date: 5/31/2016
Protected by Copyright © AVM Industries, Inc.

DETAIL #:
AVM-0520-2542-P

AVM SYSTEM 520

AUSSIE MEMBRANE 520

Topping Slab on Plywood Substrate
over AVM AUSSIE MEMBRANE 520
with Drain Fabric, Fluid Applied
Waterproofing (Light Duty)



NOTES:

1. Aussie Membrane 520 is a Polyurethane liquid (Roller or Brush Applied) for Below-Grade, Between-Slab, Planters, Roof-Gardens and similar type Waterproofing.
2. For proper membrane thickness and appropriate protection and drainage, refer to AVM Aussie Membrane 520 "Min Thickness Table"
3. Contact AVM if no drain board or protection board is specified.
4. For drainage/protection, use AVM Drainage & Protection Fabric DPF-16. For topping slabs over 4" thick or vehicular applications, use AVM Drain Board 9000.
5. This assembly is for pedestrian traffic use only. For vehicular applications and other heavy loads, contact AVM for approval.
6. Substrates must be sloped to drains and/or edges before membrane installation. (Min 1/4" per foot)
7. If water is to drain over the edge, then edge metals MUST have sufficient weep holes (at least every 6") and must be strong enough (thick enough) to act
8. Many edge details are possible. All must allow for proper water evacuation. (None should trap water) Consult AVM for details.
9. Make sure all nails are flush with the plywood surface or slightly sunken in below it. (Nails protruding above the plywood surface may puncture the membrane)
10. Reinforce the Aussie Membrane 520 with AVM Mat 800 at all plywood joints, corners, metal transitions, penetrations, drains, etc.

AVM Industries, Inc.
8245 Remmet Ave, Canoga Park, CA 91304

Quality Waterproofing Products

888.414.1041 818.888.0050
www.avmindustries.com

FILE NAME: 0520-2542-P-Topping-Slab-On-Plywood-LD-CS

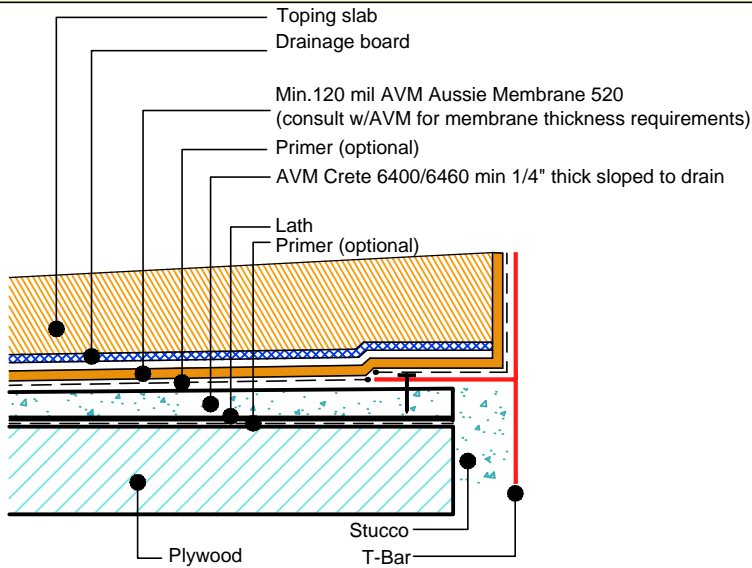
Revision Date: 5/31/2016
Protected by Copyright @ AVM Industries, Inc.

DETAIL #:
AVM-0520-2572-P

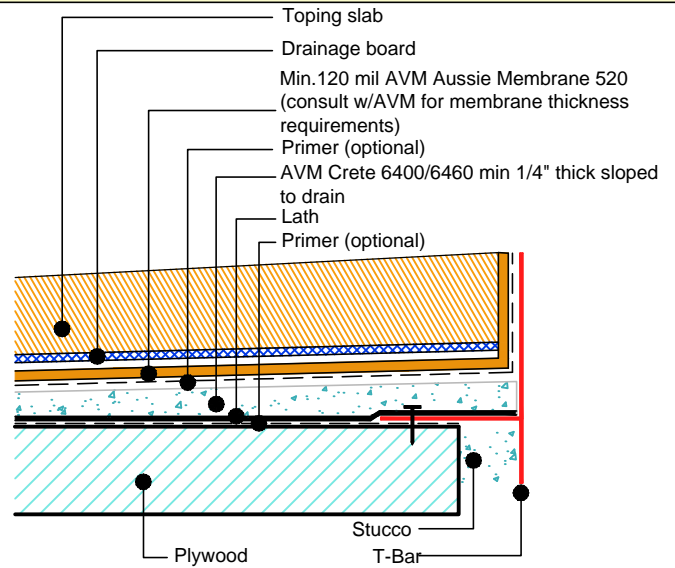
AVM SYSTEM 520

AUSSIE MEMBRANE 520

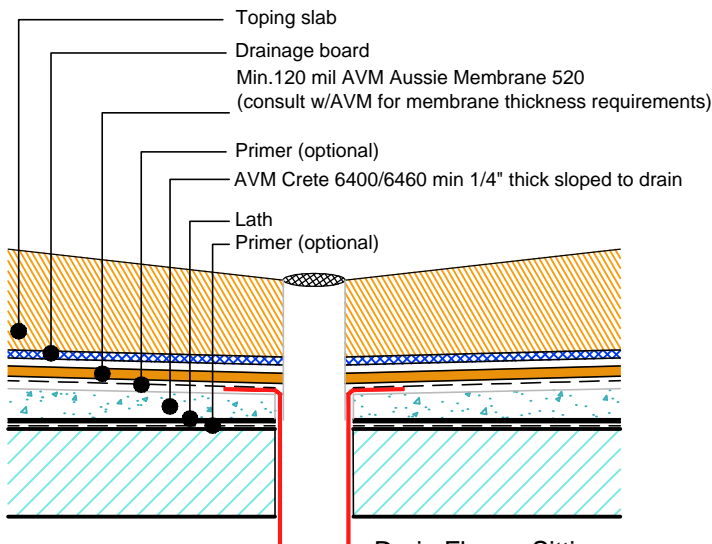
Other Edge and Drain Details Topping Slabs
Waterproofing on Plywood Substrates
AVM AUSSIE MEMBRANE 520
Fluid Applied Waterproofing (Heavy Duty)



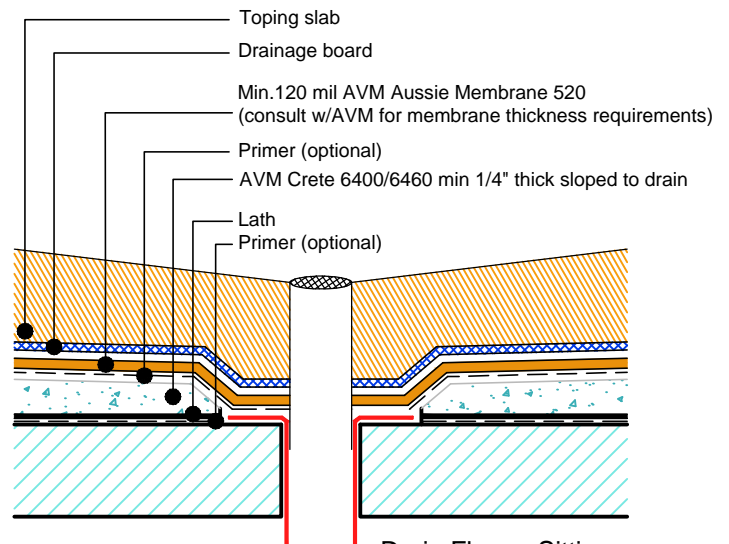
Slope Away from Edge Detail
Concrete Under Metals



Slope Away from Edge Detail
Concrete Over Metals



Drain Flange Sitting on
Crete 6400/6460



Drain Flange Sitting on
Plywood Substrate

NOTES:

1. See drawing and notes on detail number AVM-520-2502-P for more information.
2. If water is to drain away from the edge into area floor drains, then edge metals do not require weep holes.
3. Reinforce the Aussie Membrane with AVM Mat 800 at all corners, metal transitions, penetrations, gaps, drains, etc .

AVM Industries, Inc.
8245 Remmet Ave, Canoga Park, CA 91304

Quality Waterproofing Products

888.414.1041 818.888.0050
www.avmindustries.com

FILE NAME: 0520-2572-P-Topping-Slab-On-Plywood-Drains-Edges-HD-CS

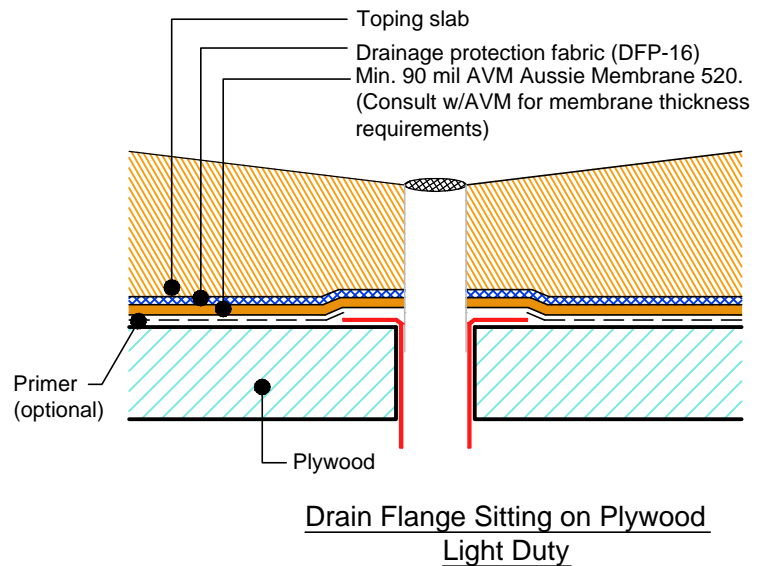
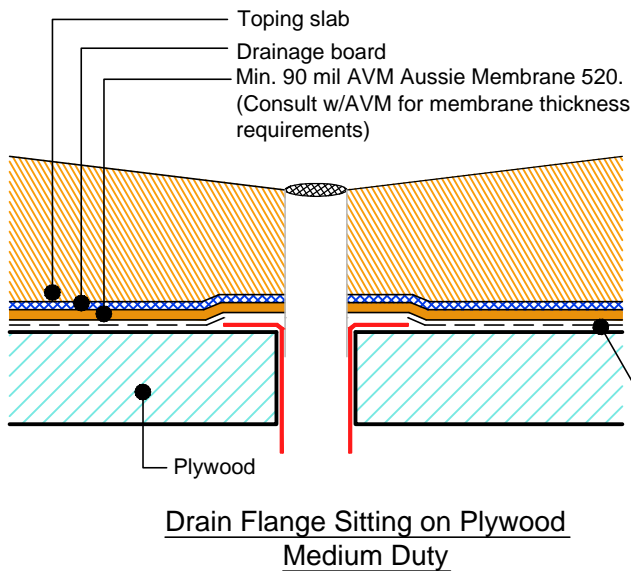
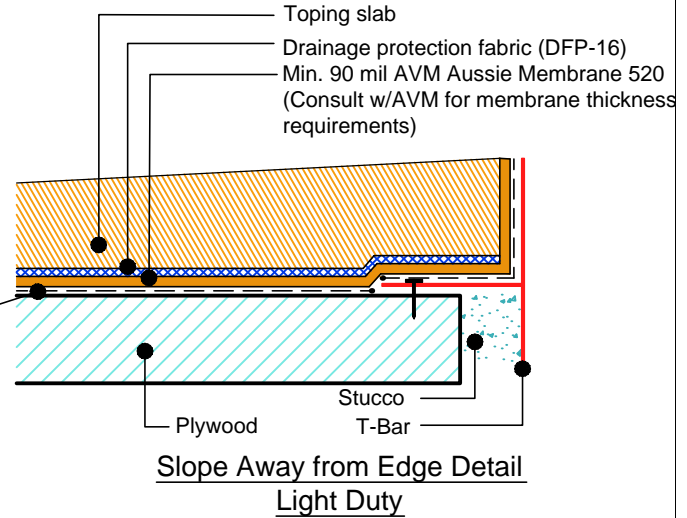
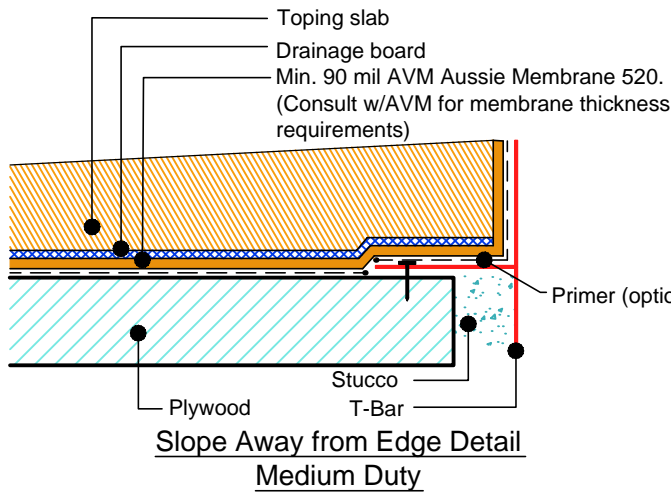
Revision Date: 5/31/2016
Protected by Copyright @ AVM Industries, Inc.

DETAIL #:
AVM-0520-2574-P

AVM SYSTEM 520

AUSSIE MEMBRANE 520

Other Edge and Drain Details Topping
Slabs Waterproofing on Plywood
Substrates.
AVM AUSSIE MEMBRANE 520
Fluid Applied Waterproofing (Medium
and Light Duty)



NOTES:

1. See drawing and notes on detail number AVM-520-2522-P for more information on medium duty applications.
2. See drawing and notes on detail number AVM-520-2542-P for more information on light duty applications.
3. If water is to drain away from the edge into area floor drains, then edge metals do not require weep holes.
4. Reinforce the Aussie Membrane with AVM Mat 800 at all corners, metal transitions, penetrations, gaps, drains, etc.

AVM Industries, Inc.
8245 Remmet Ave, Canoga Park, CA 91304

Quality Waterproofing Products

888.414.1041 818.888.0050
www.avmindustries.com

FILE NAME: 0520-2574-P-Topping-Slab-On-Plywood-Drains-Edges-MD-LD-CS

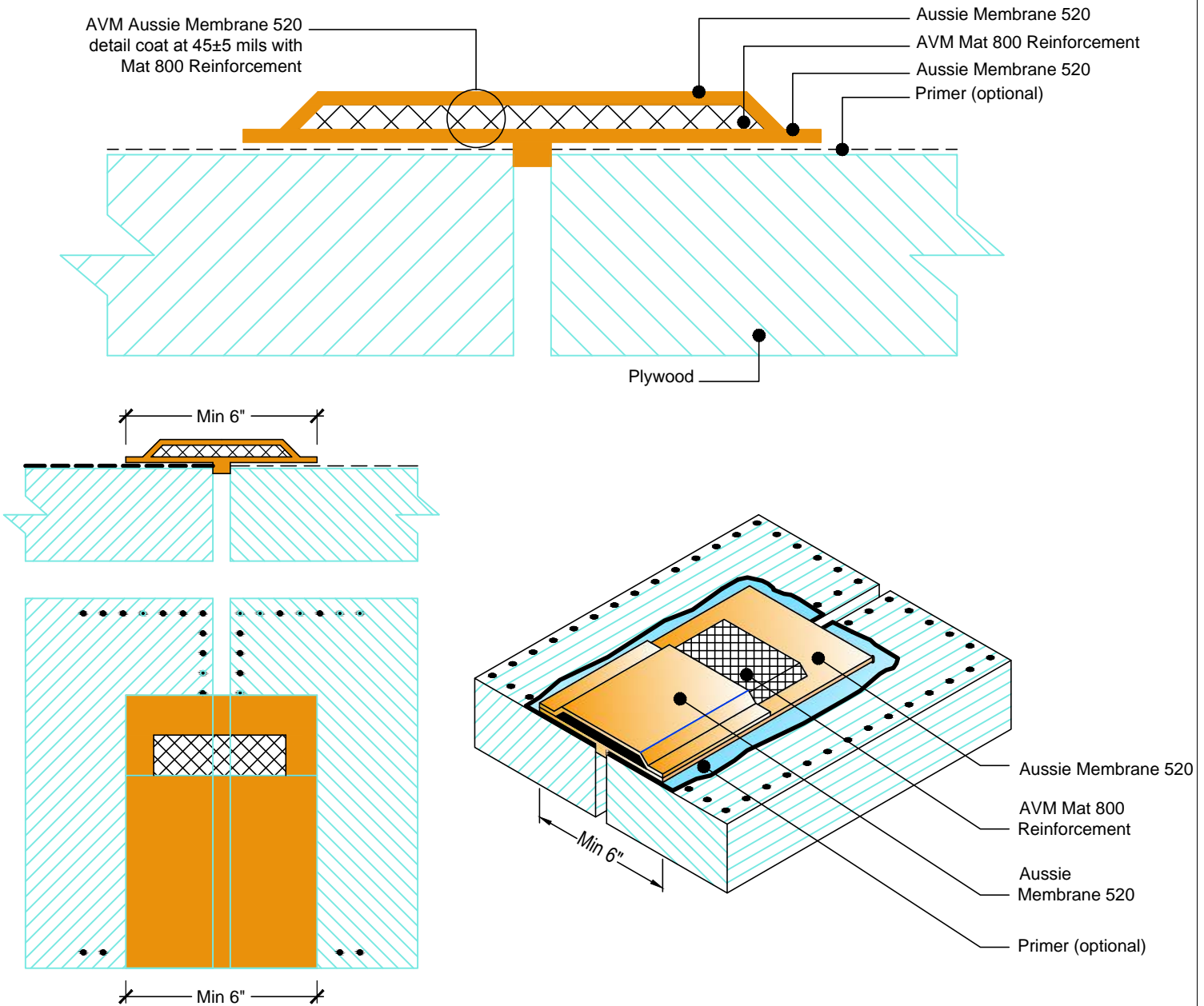
Revision Date: 5/31/2016
Protected by Copyright © AVM Industries, Inc.

DETAIL #:
AVM-0520-2580-P

AVM SYSTEM 520

AUSSIE MEMBRANE 520

Plywood Joint Detail for Topping Slabs
Waterproofing on Plywood Substrates
AVM AUSSIE MEMBRANE 520
Fluid Applied Waterproofing.



NOTES:

1. This detail may not be applicable or needed if installing metal lath and AVM Crete 6400 over the plywood substrates before installing the Aussie Membrane. (See Detail # AVM-520-2502-P)
2. Aussie Membrane 520 is a Polyurethane liquid (Roller or Brush Applied) for Below-Grade, Between-Slab, Planters, Roof-Gardens and similar type Waterproofing.
3. For proper membrane thickness and drainage / protection requirements, refer to other "Topping Slab on Plywood" Details.
4. Make sure all nails are flush with the plywood surface or slightly sunken in below it. (Nails protruding above the plywood surface may puncture the membrane)
5. Remove/grind/repair as necessary any other protrusions, sharp edges, etc that may puncture or damage the membrane.
6. Reinforce the Aussie Membrane with AVM Mat 800 as shown at all plywood joints, flashings, penetrations, etc.
7. If extra protection is needed, use double reinforcement. (two layers of Mat 800 reinforcing fabric)

AVM Industries, Inc.
8245 Remmet Ave, Canoga Park, CA 91304

Quality Waterproofing Products

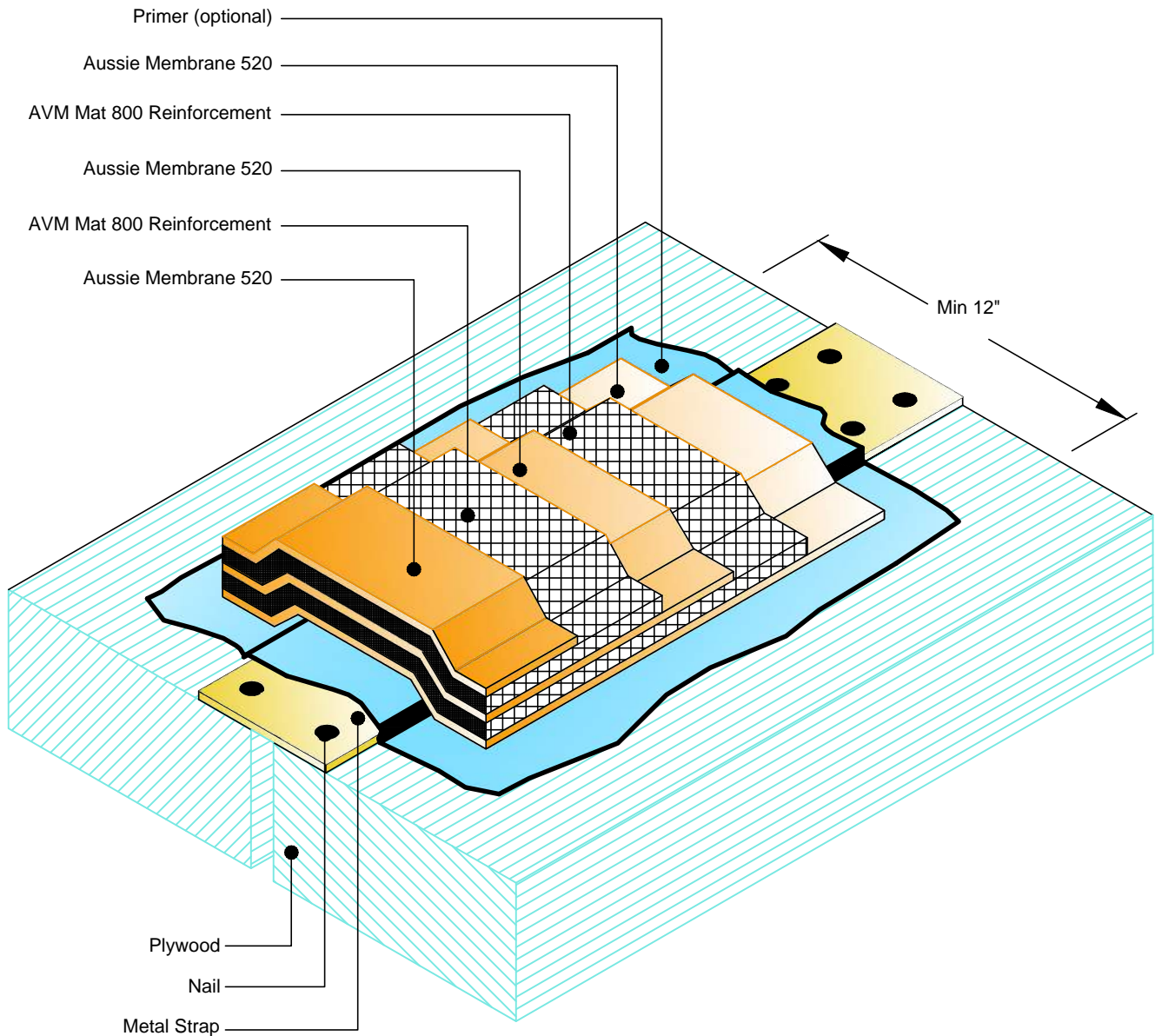
888.414.1041 818.888.0050
www.avmindustries.com

DETAIL #:
AVM-0520-2582-P

AVM SYSTEM 520

AUSSIE MEMBRANE 520

**Metal Straps at Plywood Joints Detail
for Topping Slabs Waterproofing on
Plywood Substrates
AVM AUSSIE MEMBRANE 520
Fluid Applied Waterproofing.**



NOTES:

1. This detail may not be applicable or needed if installing metal lath and AVM Crete 6400 over the plywood substrates before installing the Aussie Membrane. (See Detail # AVM-520-2502-P)
2. Aussie Membrane 520 is a Polyurethane liquid (Roller or Brush Applied) for Below-Grade, Between-Slab, Planters, Roof-Gardens and similar type Waterproofing.
3. For proper membrane thickness and drainage / protection requirements, refer to other "Topping Slab on Plywood" Details.
4. Make sure all nails are flush with the plywood surface or slightly sunken in below it. (Nails protruding above the plywood surface may puncture the membrane)
5. Remove/grind/repair as necessary any other protrusions, sharp edges, etc that may puncture or damage the membrane.
6. Metal straps must be reinforced with Aussie Membrane 520 and a single layer of Mat 800 to prevent damage to the membrane. For extra protection, double reinforce as shown. (use two layers of Mat 800)
7. After preparing the metal straps and surrounding plywood surfaces, apply a liberal coat of Aussie Membrane 520 before installing the first layer of fabric to ensure the strap edges and nail heads will not cut into or damage the fabric.

AVM Industries, Inc.
8245 Remmet Ave, Canoga Park, CA 91304

Quality Waterproofing Products

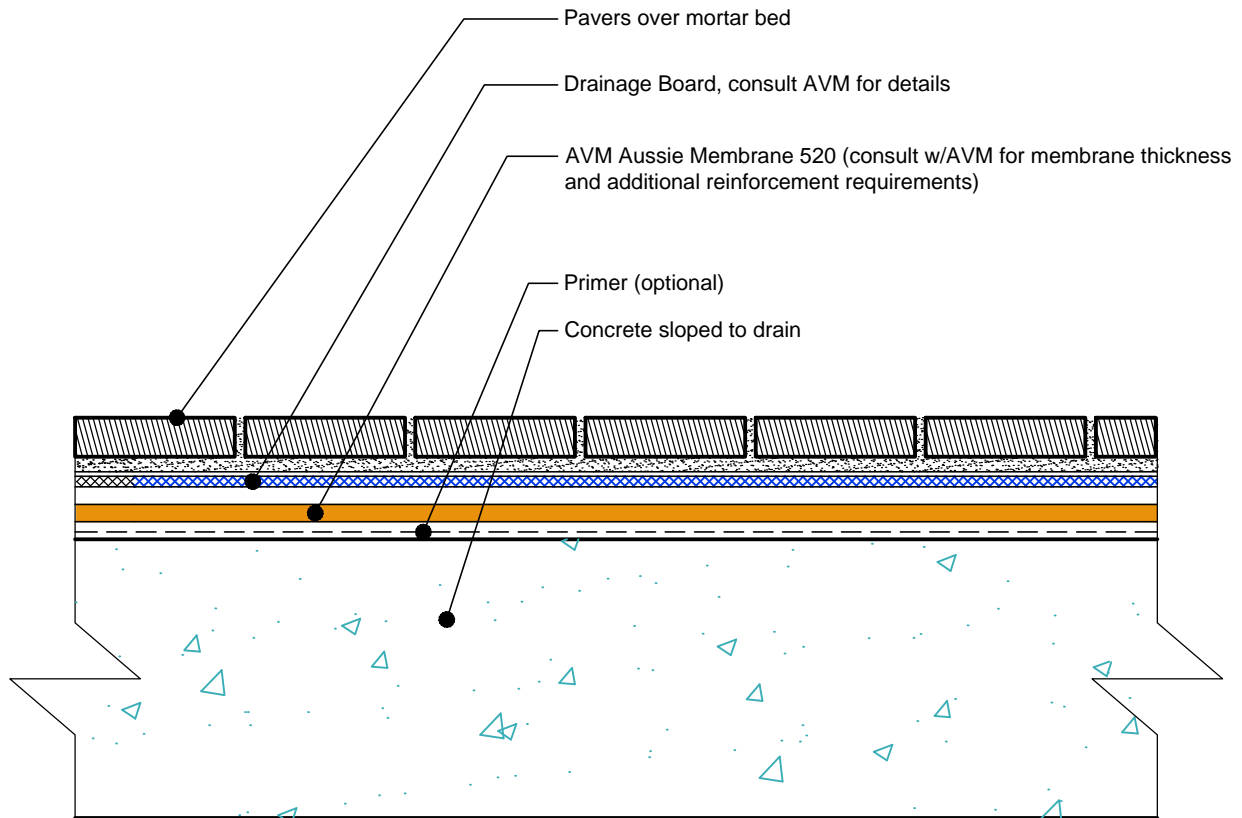
888.414.1041 818.888.0050
www.avmindustries.com

DETAIL #:
AVM-0520-3002-P

AVM SYSTEM 520

AUSSIE MEMBRANE 520

Pavers on Concrete Substrate over
AVM AUSSIE MEMBRANE 520
Fluid Applied Waterproofing.



NOTES:

1. Aussie Membrane 520 is a Polyurethane liquid (Roller or Brush Applied) for Below-Grade, Between-Slab, Planters, Roof-Gardens and similar type Waterproofing.
2. For proper membrane thickness and appropriate protection and drainage, refer to AVM Aussie Membrane 520 "Min Thickness Table"
3. Contact AVM if no drain board or protection board is specified.

AVM Industries, Inc.
8245 Remmet Ave, Canoga Park, CA 91304

Quality Waterproofing Products

888.414.1041 818.888.0050
www.avmindustries.com

FILE NAME: 0520-3002-C-Pavers-On-Concrete-CS

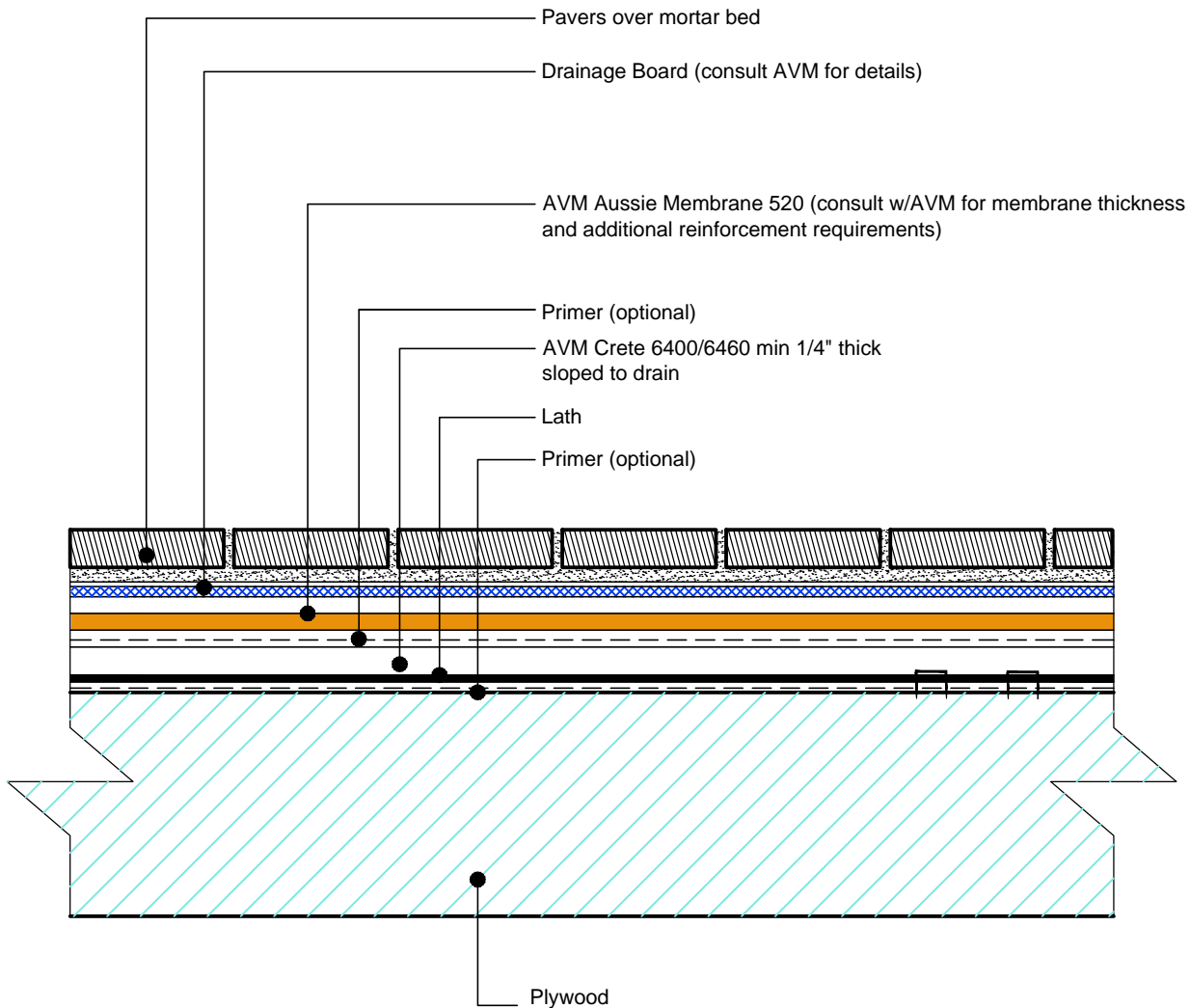
Revision Date: 5/31/2016
Protected by Copyright @ AVM Industries, Inc.

DETAIL #:
AVM-0520-3502-P

AVM SYSTEM 520

AUSSIE MEMBRANE 520

Pavers on Plywood Substrate over
AVM AUSSIE MEMBRANE 520
Fluid Applied Waterproofing.



NOTES:

1. Aussie Membrane 520 is a Polyurethane liquid (Roller or Brush Applied) for Below-Grade, Between-Slab, Planters, Roof-Gardens and similar type Waterproofing.
2. For proper membrane thickness and appropriate protection and drainage, refer to AVM Aussie Membrane 520 "Min Thickness Table"
3. Contact AVM if no drain board or protection board is specified.
4. Crete 6400/6460. Refer to the Crete 6400 or Crete 6460 Technical Data Sheets or Installation Instructions for more info.

AVM Industries, Inc.
8245 Remmet Ave, Canoga Park, CA 91304

Quality Waterproofing Products

888.414.1041 818.888.0050
www.avmindustries.com

FILE NAME: 0520-3502-P-Pavers-On-Plywood-CS

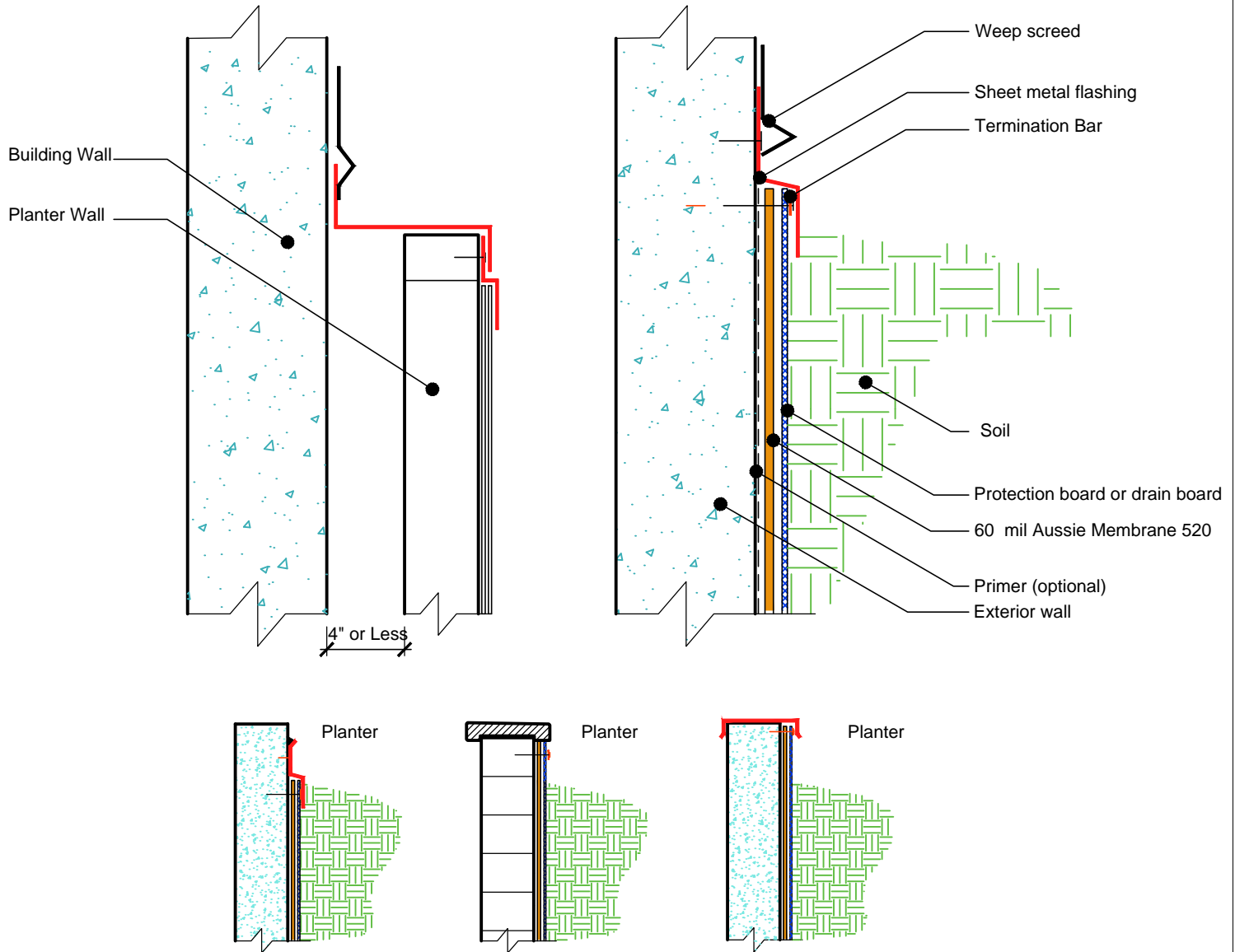
Revision Date: 5/31/2016
Protected by Copyright © AVM Industries, Inc.

DETAIL #:
AVM-0520_6002-C

AVM SYSTEM 520

AUSSIE MEMBRANE 520

Terminations
AVM AUSSIE MEMBRANE 520
Fluid Applied Waterproofing.



NOTES:

1. Aussie Membrane 520 is a Polyurethane liquid (Roller or Brush Applied) for Below-Grade, Between-Slab, Planters, Roof-Gardens and similar type Waterproofing.
2. For proper membrane thickness and appropriate protection and drainage, refer to AVM Aussie Membrane 520 "Min Thickness Table"
3. Contact AVM if no drain board or protection board is specified.

AVM Industries, Inc.
8245 Remmet Ave, Canoga Park, CA 91304

Quality Waterproofing Products

888.414.1041 818.888.0050
www.avmindustries.com

FILE NAME: 0520-6002-C-Termination-Walls-CS

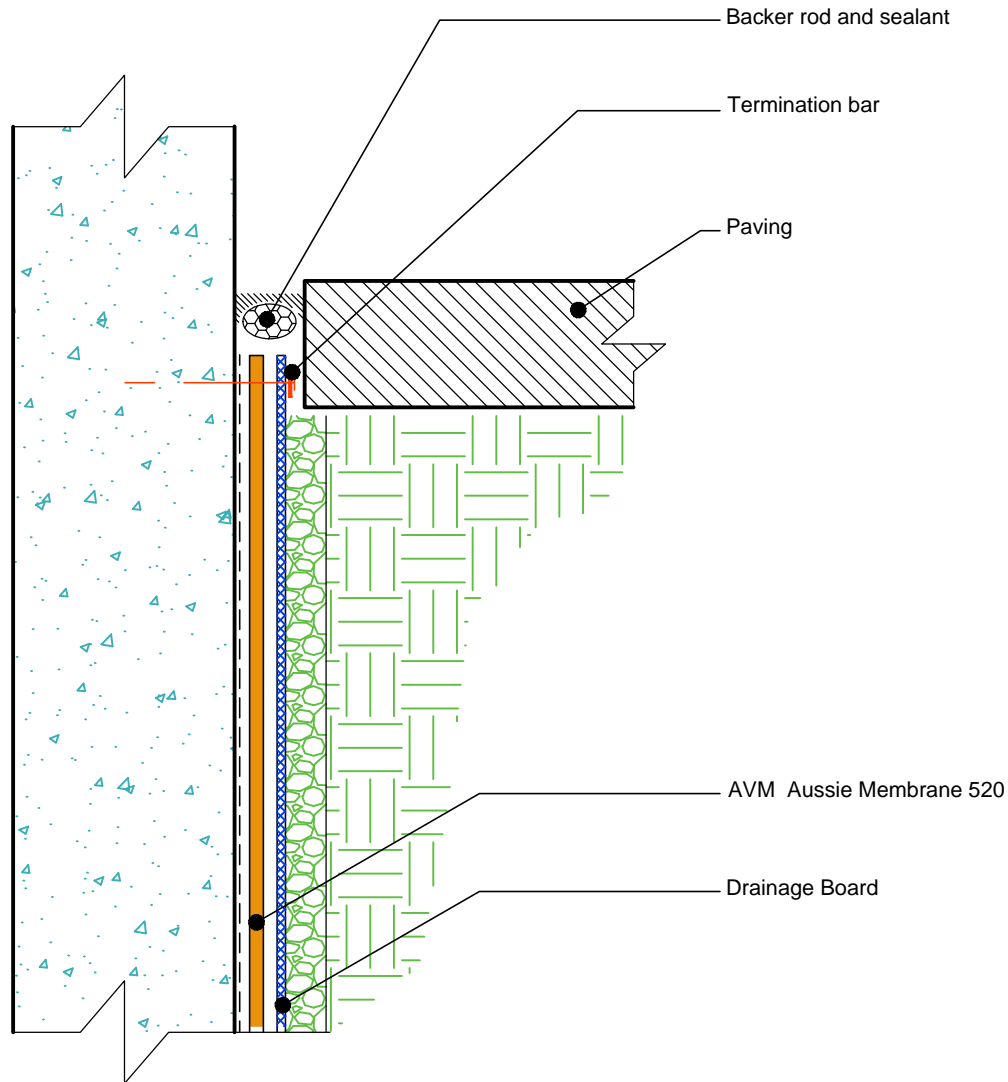
Revision Date: 5/31/2016
Protected by Copyright © AVM Industries, Inc.

DETAIL #:
AVM-0520-6004-C

AVM SYSTEM 520

AUSSIE MEMBRANE 520

Terminations at Sidewalks on Grade
AVM AUSSIE MEMBRANE 520
Fluid Applied Waterproofing.



NOTES:

1. Aussie Membrane 520 is a Polyurethane liquid (Roller or Brush Applied) for Below-Grade, Between-Slab, Planters, Roof-Gardens and similar type Waterproofing.
2. For proper membrane thickness and appropriate protection and drainage, refer to AVM Aussie Membrane 520 "Min Thickness Table"
3. Contact AVM if no drain board or protection board is specified.

AVM Industries, Inc.
8245 Remmet Ave, Canoga Park, CA 91304

Quality Waterproofing Products

888.414.1041 818.888.0050
www.avmindustries.com

FILE NAME: 0520-6004-C-Termination-Sidewalks-CS

Revision Date: 5/31/2016
Protected by Copyright @ AVM Industries, Inc.

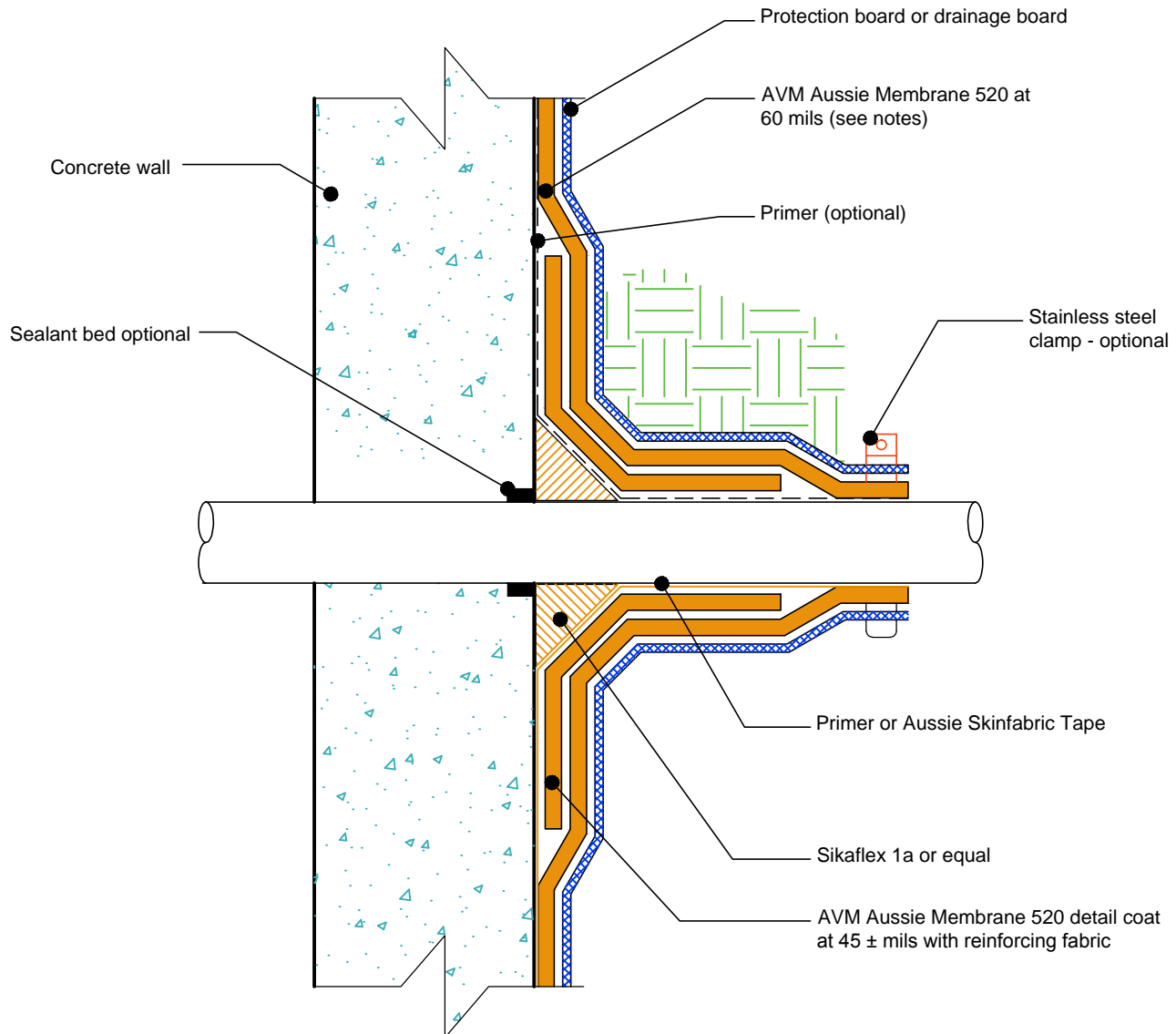
DETAIL #:

AVM-0520_6502-C

AVM SYSTEM 520

AUSSIE MEMBRANE 520

Pipe Penetration Thru Wall (Option 1)
AVM AUSSIE MEMBRANE 520
Fluid Applied Waterproofing.



NOTES:

1. Aussie Membrane 520 is a Polyurethane liquid (Roller or Brush Applied) for Below-Grade, Between-Slab, Planters, Roof-Gardens and similar type Waterproofing.
2. For proper membrane thickness and appropriate protection and drainage, refer to AVM Aussie Membrane 520 "Min Thickness Table"
3. Contact AVM if no drain board or protection board is specified.
4. With Sealant around pipe.
5. Aussie Membrane 520 must properly bond to pipe penetration. Use epoxy primer or Aussie Skin Fabric Tape. In addition, use clamp if needed.
6. Sealant must properly bond to pipe penetration. Use approved primer or Aussie Skin Fabric Tape.

AVM Industries, Inc.
8245 Remmet Ave, Canoga Park, CA 91304

Quality Waterproofing Products

888.414.1041 818.888.0050
www.avmindustries.com

FILE NAME: 0520-6502-C-Pipe-Thru-Wall-01-CS

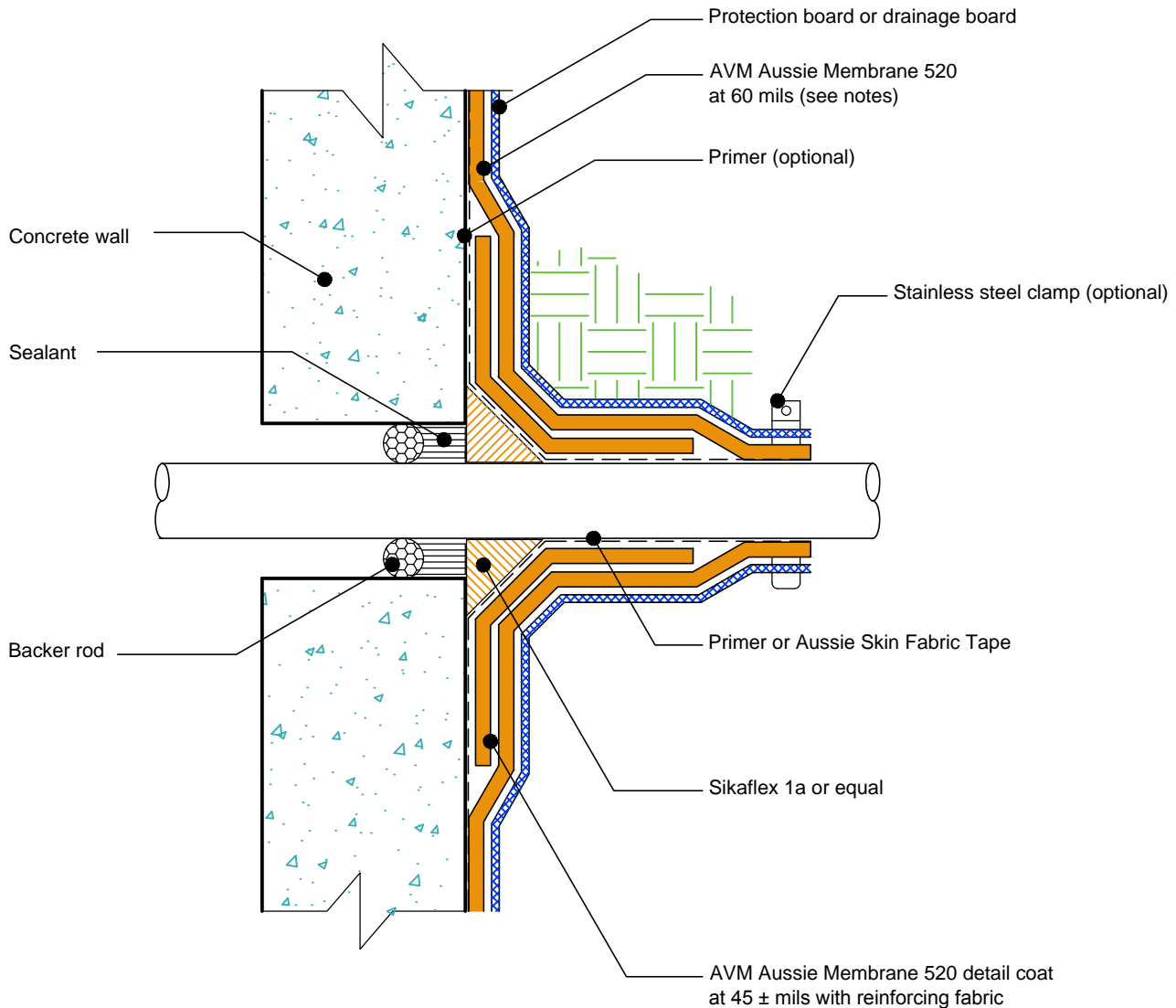
Revision Date: 5/31/2016
Protected by Copyright © AVM Industries, Inc.

DETAIL #:
AVM-0520-6504-C

AVM SYSTEM 520

AUSSIE MEMBRANE 520

Pipe Penetration Thru Wall (Option 2)
AVM AUSSIE MEMBRANE 520
Fluid Applied Waterproofing.



NOTES:

1. Aussie Membrane 520 is a Polyurethane liquid (Roller or Brush Applied) for Below-Grade, Between-Slab, Planters, Roof-Gardens and similar type Waterproofing.
2. For proper membrane thickness and appropriate protection and drainage, refer to AVM Aussie Membrane 520 "Min Thickness Table"
3. Contact AVM if no drain board or protection board is specified.
4. With Backer Rod and Sealant around pipe 33.
5. Aussie Membrane 520 must properly bond to pipe penetration. Use epoxy primer or Aussie Skin Fabric Tape. In addition, use clamp if needed.
6. Sealant must properly bond to pipe penetration. Use approved primer or Aussie Skin Fabric Tape.

AVM Industries, Inc.
8245 Remmet Ave, Canoga Park, CA 91304

Quality Waterproofing Products

888.414.1041 818.888.0050
www.avmindustries.com

FILE NAME: 0520-6504-C-Pipe-Thru-Wall-02-CS

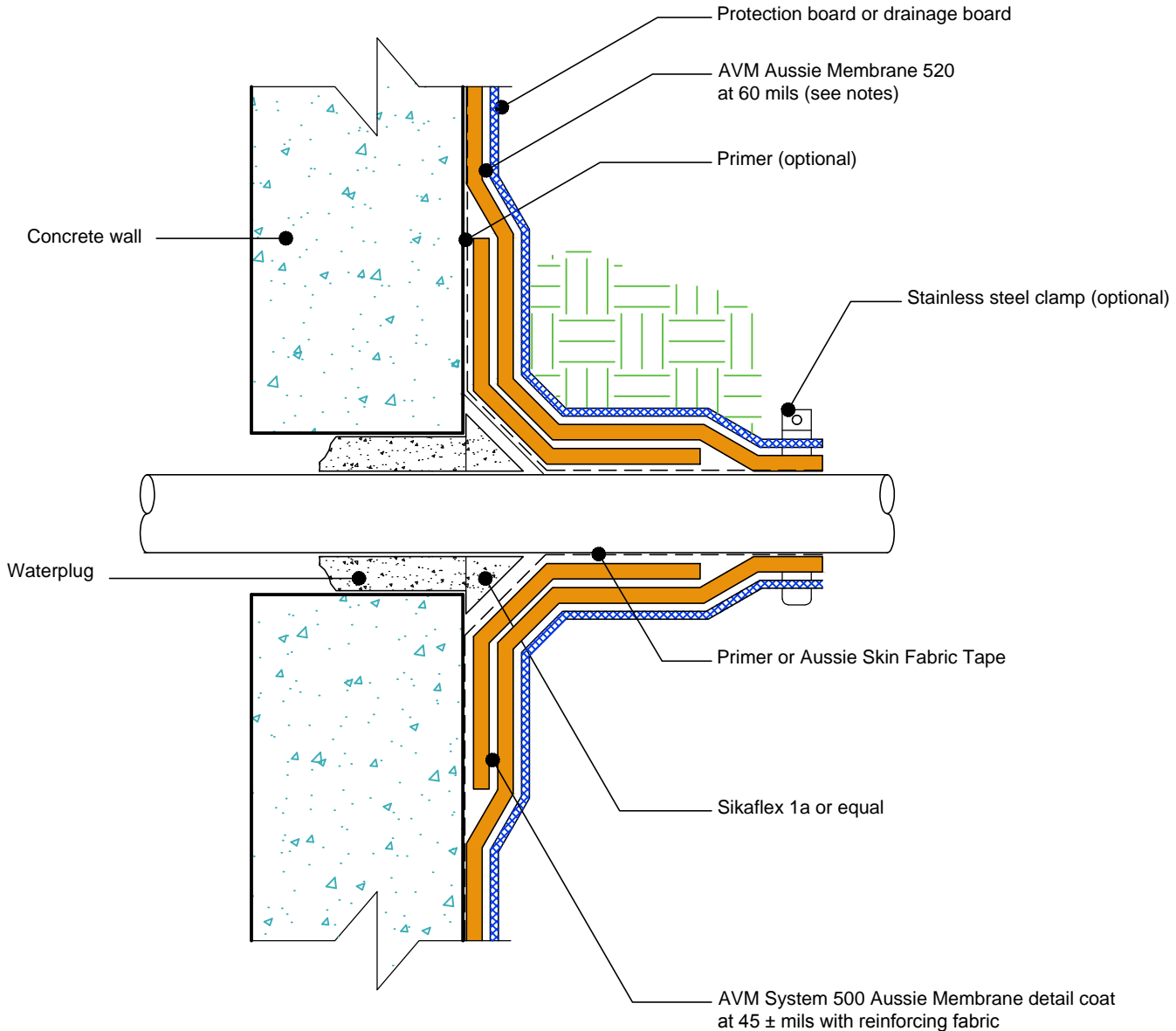
Revision Date: 5/31/2016
Protected by Copyright @ AVM Industries, Inc.

DETAIL #:
AVM-0520-6506-C

AVM SYSTEM 520

AUSSIE MEMBRANE 520

Pipe Penetration Thru Wall (Option 3)
AVM AUSSIE MEMBRANE 520
Fluid Applied Waterproofing.



NOTES:

1. Aussie Membrane 520 is a Polyurethane liquid (Roller or Brush Applied) for Below-Grade, Between-Slab, Planters, Roof-Gardens and similar type Waterproofing.
2. For proper membrane thickness and appropriate protection and drainage, refer to AVM Aussie Membrane 520 "Min Thickness Table"
3. Contact AVM if no drain board or protection board is specified.
4. With Water Plug and Sealant around pipe
5. Aussie Membrane 520 must properly bond to pipe penetration. Use epoxy primer or Aussie Skin Fabric Tape. In addition, use clamp if needed.
6. Sealant must properly bond to pipe penetration. Use approved primer or Aussie Skin Fabric Tape.

AVM Industries, Inc.
8245 Remmet Ave, Canoga Park, CA 91304

Quality Waterproofing Products

888.414.1041 818.888.0050
www.avmindustries.com

FILE NAME: 0520-6506-C-Pipe-Thru-Wall-03-CS

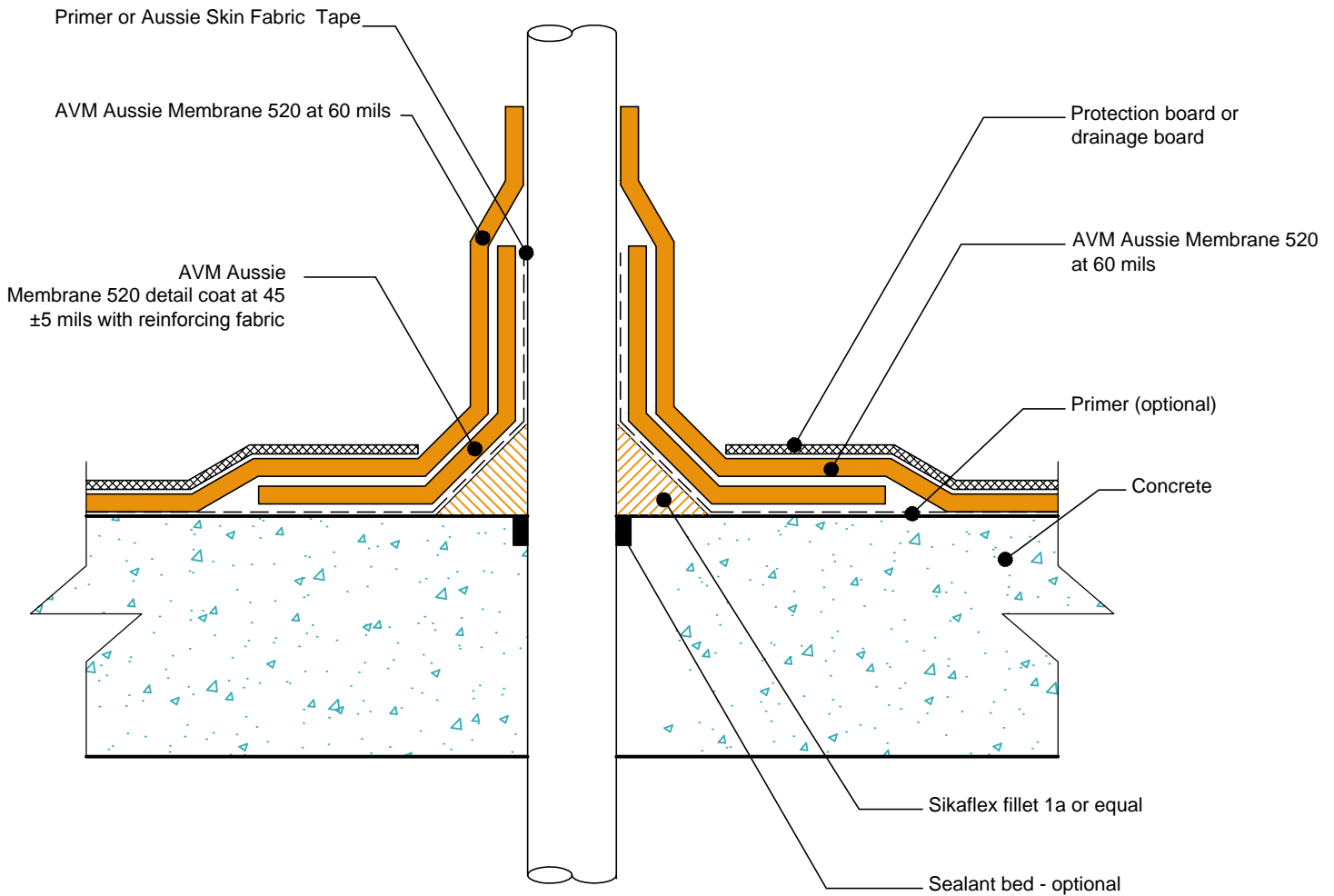
Revision Date: 5/31/2016
Protected by Copyright © AVM Industries, Inc.

DETAIL #:
AVM-0520-6702-C

AVM SYSTEM 520

AUSSIE MEMBRANE 520

Pipe Penetration Thru Slab (Option 1)
AVM AUSSIE MEMBRANE 520
Fluid Applied Waterproofing.



NOTES:

1. Aussie Membrane 520 is a Polyurethane liquid (Roller or Brush Applied) for Below-Grade, Between-Slab, Planters, Roof-Gardens and similar type Waterproofing.
2. For proper membrane thickness and appropriate protection and drainage, refer to AVM Aussie Membrane 520 "Min Thickness Table"
3. Contact AVM if no drain board or protection board is specified.
4. With Sealant around pipe.
5. Aussie Membrane 520 must properly bond to pipe penetration. Use epoxy primer or Aussie Skin Fabric Tape.
6. Sealant must properly bond to pipe penetration. Use approved primer or Aussie Skin Fabric Tape.

AVM Industries, Inc.
8245 Remmet Ave, Canoga Park, CA 91304

Quality Waterproofing Products

888.414.1041 818.888.0050
www.avmindustries.com

FILE NAME: 0520-6702-C-Pipe-Thru-Slab-01-CS

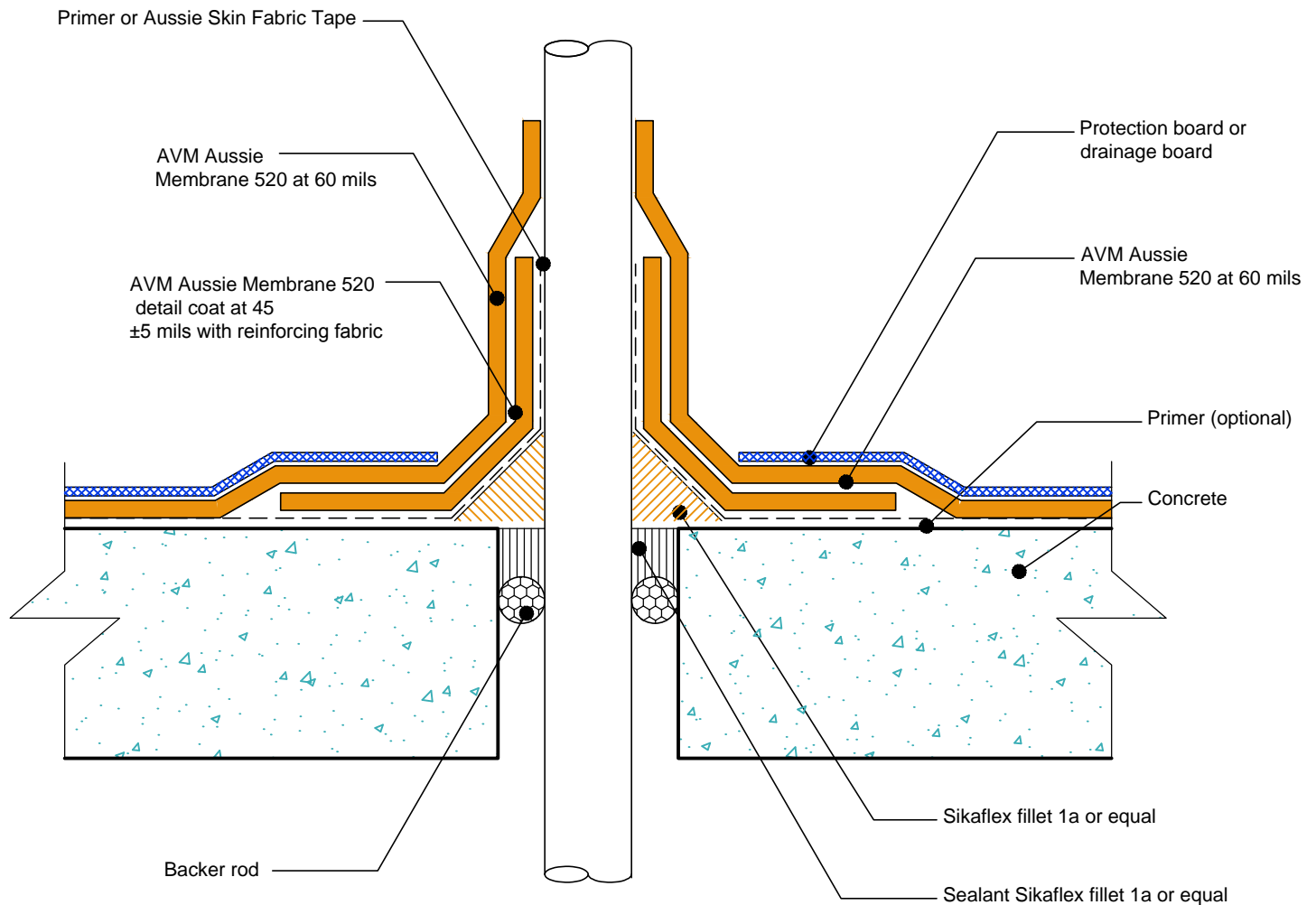
Revision Date: 5/31/2016
Protected by Copyright @ AVM Industries, Inc.

DETAIL #:
AVM-0520_6704-C

AVM SYSTEM 520

AUSSIE MEMBRANE 520

Pipe Penetration Thru Slab (Option 2)
AVM AUSSIE MEMBRANE 520
Fluid Applied Waterproofing.



NOTES:

1. Aussie Membrane 520 is a Polyurethane liquid (Roller or Brush Applied) for Below-Grade, Between-Slab, Planters, Roof-Gardens and similar type Waterproofing.
2. For proper membrane thickness and appropriate protection and drainage, refer to AVM Aussie Membrane 520 "Min Thickness Table"
3. Contact AVM if no drain board or protection board is specified.
4. With Backer Rod and Sealant around pipe.
4. Aussie Membrane 520 must properly bond to pipe penetration. Use epoxy primer or Aussie Skin Fabric Tape.
6. Sealant must properly bond to pipe penetration. Use approved primer or Aussie Skin Fabric Tape.

AVM Industries, Inc.
8245 Remmet Ave, Canoga Park, CA 91304

Quality Waterproofing Products

888.414.1041 818.888.0050
www.avmindustries.com

FILE NAME: 0520-6704-C-Pipe-Thru-Slab-02-CS

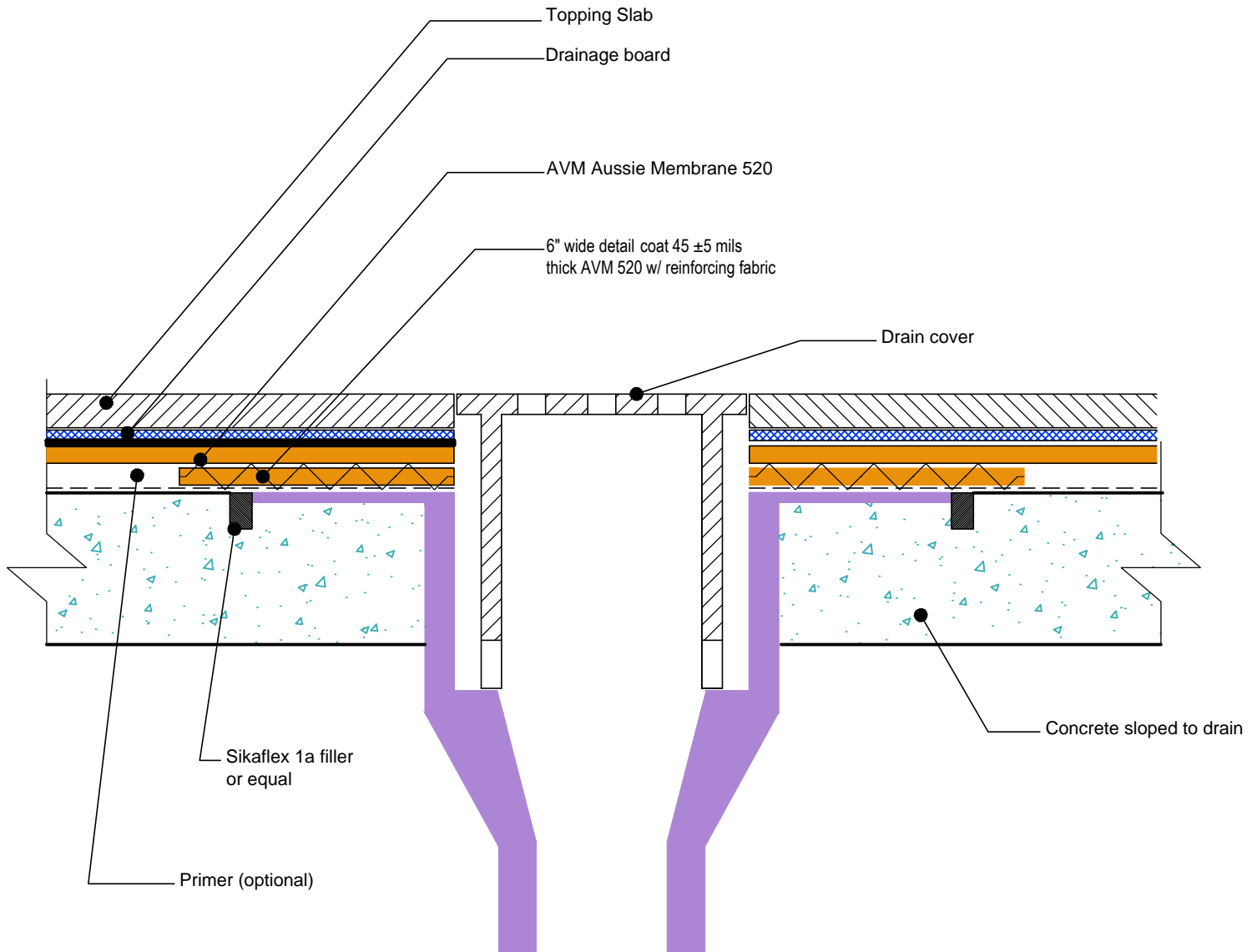
Revision Date: 5/31/2016
Protected by Copyright @ AVM Industries, Inc.

DETAIL #:
AVM-0520-7002-C

AVM SYSTEM 520

AUSSIE MEMBRANE 520

Area Drain Detail
AVM AUSSIE MEMBRANE 520
Fluid Applied Waterproofing.



NOTES:

1. Aussie Membrane 520 is a Polyurethane liquid (Roller or Brush Applied) for Below-Grade, Between-Slab, Planters, Roof-Gardens and similar type Waterproofing.
2. For proper membrane thickness and appropriate protection and drainage, refer to AVM Aussie Membrane 520 "Min Thickness Table"
3. Contact AVM if no drain board or protection board is specified.
4. For drainage and protection on topping Slabs up to 4" thick for pedestrian applications, use AVM Drain Board 6000.
5. For drainage and protection on topping slabs over 4" thick or for vehicular applications, use AVM Drain Board 9000.
6. Reinforce the Aussie Membrane 520 with AVM Mat 800 at all corners, metal transitions, penetrations, gaps, drains, etc.

AVM Industries, Inc.
8245 Remmet Ave, Canoga Park, CA 91304

Quality Waterproofing Products

888.414.1041 818.888.0050
www.avmindustries.com

FILE NAME: 0520-7002-C-Area-Drain-CS

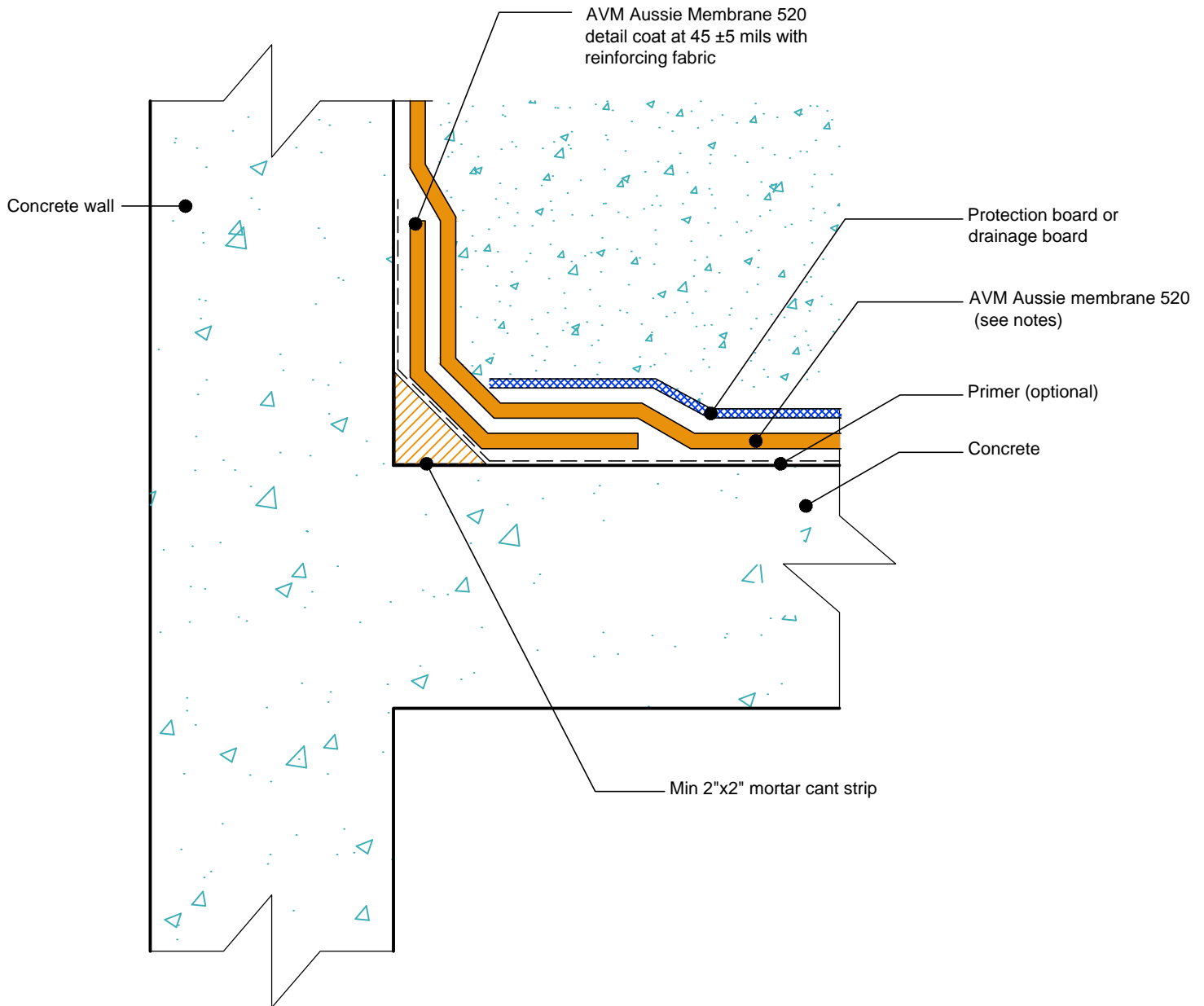
Revision Date: 5/31/2016
Protected by Copyright © AVM Industries, Inc.

DETAIL #:
AVM-0520-7502-C

AVM SYSTEM 520

AUSSIE MEMBRANE 520

Transition Horizontal to Vertical
Topping Slab or Pavers
AVM AUSSIE MEMBRANE 520
Fluid Applied Waterproofing.



NOTES:

1. Aussie Membrane 520 is a Polyurethane liquid (Roller or Brush Applied) for Below-Grade, Between-Slab, Planters, Roof-Gardens and similar type Waterproofing.
2. For proper membrane thickness and appropriate protection and drainage, refer to AVM Aussie Membrane 520 "Min Thickness Table"
3. Contact AVM if no drain board or protection board is specified.
4. Mortar cant strip and detail coat at the cold joint may be replaced with other cold joint details with prior approval from AVM.

AVM Industries, Inc.
8245 Remmet Ave, Canoga Park, CA 91304

Quality Waterproofing Products

888.414.1041 818.888.0050
www.avmindustries.com

FILE NAME: 0520-7502-C-Transition-Horizontal-To-Vertical-CS

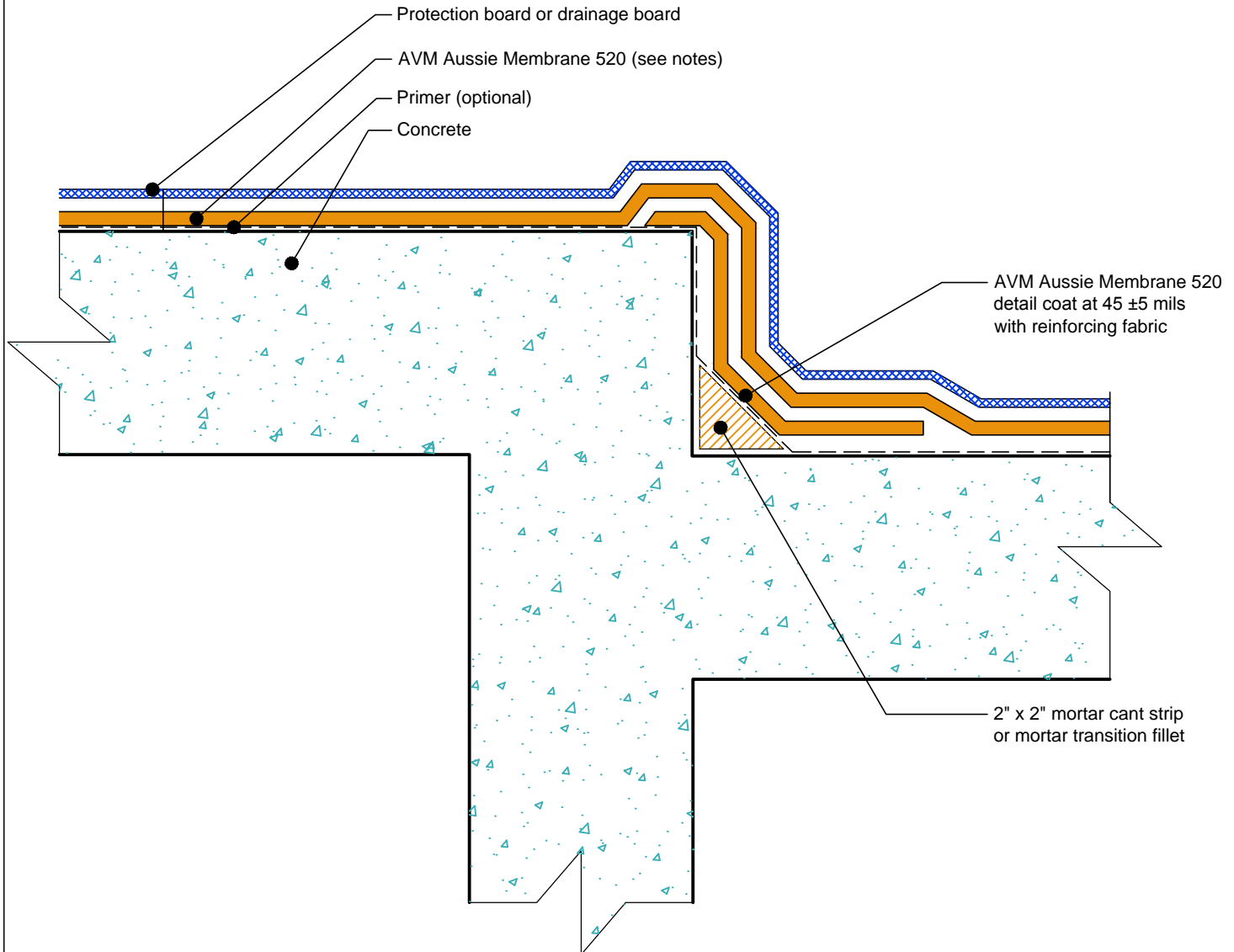
Revision Date: 5/31/2016
Protected by Copyright @ AVM Industries, Inc.

DETAIL #:
AVM-0520-7504-C

AVM SYSTEM 520

AUSSIE MEMBRANE 520

Transition At Depressed Slab
AVM AUSSIE MEMBRANE 520
Fluid Applied Waterproofing.



NOTES:

1. Aussie Membrane 520 is a Polyurethane liquid (Roller or Brush Applied) for Below-Grade, Between-Slab, Planters, Roof-Gardens and similar type Waterproofing.
2. For proper membrane thickness and appropriate protection and drainage, refer to AVM Aussie Membrane 520 "Min Thickness Table"
3. Contact AVM if no drain board or protection board is specified.
4. Mortar cant strip and detail coat at the cold joint may be replaced with other cold joint details with prior approval from AVM.

AVM Industries, Inc.
8245 Remmet Ave, Canoga Park, CA 91304

Quality Waterproofing Products

888.414.1041 818.888.0050
www.avmindustries.com

FILE NAME: 0520-7504-C-Transition-Depressed-Slab-CS

Revision Date: 5/31/2016
Protected by Copyright © AVM Industries, Inc.

DETAIL #:
AVM-0520-8002-C

AVM SYSTEM 520

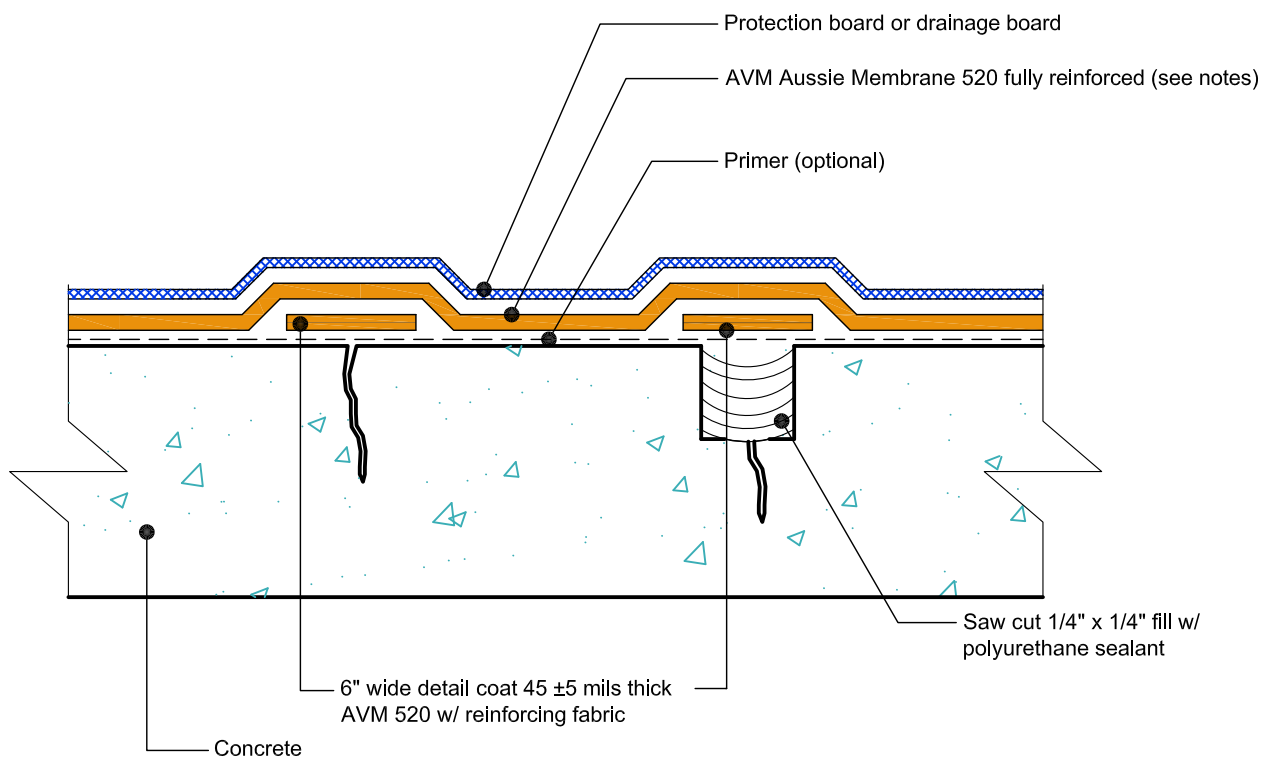
AUSSIE MEMBRANE 520

Crack Repair (Option 1)
AVM AUSSIE MEMBRANE 520
Fluid Applied Waterproofing.



Crack less than 1/16" wide

Crack greater than 1/16" wide



NOTES:

1. Aussie Membrane 520 is a Polyurethane liquid (Roller or Brush Applied) for Below-Grade, Between-Slab, Planters, Roof-Gardens and similar type Waterproofing.
2. For proper membrane thickness and appropriate protection and drainage, refer to AVM Aussie Membrane 520 "Min Thickness Table"
3. Contact AVM if no drain board or protection board is specified.

AVM Industries, Inc.
8245 Remmet Ave, Canoga Park, CA 91304

Quality Waterproofing Products

888.414.1041 818.888.0050
www.avmindustries.com

FILE NAME: 0520-8002-C-Crack-Repair-01-CS

Revision Date: 5/31/2016
Protected by Copyright @ AVM Industries, Inc.

SECTION 1: Identification of the substance/mixture and of the company/undertaking

1.1. Product identifier

Trade name : Aussie Membrane 520
Product form : Mixture

1.2. Relevant identified uses of the substance or mixture and uses advised against

1.3. Details of the supplier of the safety data sheet

AVM Industries, Inc.
8245 Remmet Ave
Canoga Park, CA 91304
Tel: 818-888-0050
www.avmindustries.com

1.4. Emergency telephone number

No additional information available

SECTION 2: Hazards identification

2.1. Classification of the substance or mixture

GHS-US classification

Skin Irrit. 2 H315
Eye Irrit. 2A H319
Skin Sens. 1 H317

2.2. Label elements

GHS-US labelling

Hazard pictograms (GHS-US) :



GHS07

Signal word (GHS-US) :

Warning

Hazard statements (GHS-US) :

H315 - Causes skin irritation
H317 - May cause an allergic skin reaction
H319 - Causes serious eye irritation

Precautionary statements (GHS-US) :

P261 - Avoid breathing mist, vapours
P264 - Wash hands, forearms and face thoroughly after handling
P272 - Contaminated work clothing must not be allowed out of the workplace
P280 - Wear eye protection, face protection, protective gloves, protective clothing
P302+P352 - If on skin: Wash with plenty of soap and water
P305+P351+P338 - IF IN EYES: Rinse cautiously with water for several minutes. Remove contact lenses, if present and easy to do. Continue rinsing
P321 - Specific treatment (see first aid instructions on this label)
P333+P313 - If skin irritation or rash occurs: Get medical advice/attention
P337+P313 - If eye irritation persists: Get medical advice/attention
P362+P364 - Take off contaminated clothing and wash it before reuse
P363 - Wash contaminated clothing before reuse
P501 - Dispose of contents/container to a licensed hazardous-waste disposal contractor or collection site except for empty clean containers which can be disposed of as non-hazardous waste

2.3. Other hazards

No additional information available

2.4. Unknown acute toxicity (GHS US)

No data available

SECTION 3: Composition/information on ingredients

3.1. Substance

Not applicable

3.2. Mixture

Name	Product identifier	%
Phosphonic acid, (2-ethylhexyl)-, bis(2-ethylhexyl) ester	(CAS No) 126-63-6	10 - 30*

*In accordance with paragraph (i) of the OSHA Hazard Communication Standard (29 CFR §1910.1200), the specific chemical identity or exact weight % has been withheld as a trade secret

Aussie Membrane 520

Safety Data Sheet

Prepared according to Federal Register / Vol. 77, No. 58 / Monday, March 26, 2012 / Rules and Regulations

SECTION 4: First aid measures

4.1. Description of first aid measures

- First-aid measures general : If exposed or concerned, get medical attention/advice. Show this safety data sheet to the doctor in attendance. Wash contaminated clothing before re-use. Never give anything to an unconscious person.
- First-aid measures after inhalation : IF INHALED: Remove to fresh air and keep at rest in a position comfortable for breathing. Get medical attention if breathing is affected. If breathing is difficult, supply oxygen.
- First-aid measures after skin contact : IF ON SKIN (or clothing): Remove affected clothing and wash all exposed skin with water for at least 15 minutes. If irritation develops or persists, get medical attention.
- First-aid measures after eye contact : IF IN EYES: Immediately flush with plenty of water for at least 15 minutes. Remove contact lenses if present and easy to do so. If pain, blinking, or irritation develops or persists, get medical attention. Continue rinsing.
- First-aid measures after ingestion : IF SWALLOWED: rinse mouth thoroughly. Do not induce vomiting without advice from poison control center or medical professional. Get medical attention if you feel unwell.

4.2. Most important symptoms and effects, both acute and delayed

- Symptoms/injuries : Causes skin irritation. May cause an allergic skin reaction. Causes serious eye irritation.
- Symptoms/injuries after inhalation : May cause respiratory irritation.
- Symptoms/injuries after skin contact : Causes skin irritation. May cause an allergic skin reaction.
- Symptoms/injuries after eye contact : Causes serious eye irritation.
- Symptoms/injuries after ingestion : May cause gastrointestinal irritation.

4.3. Indication of any immediate medical attention and special treatment needed

No additional information available.

SECTION 5: Firefighting measures

5.1. Extinguishing media

- Suitable extinguishing media : Water spray. carbon dioxide (CO₂). Sand. Extinguishing powder. Foam.

5.2. Special hazards arising from the substance or mixture

- Fire hazard : Heating may cause a fire.
- Explosion hazard : Product does present an explosion hazard.
- Reactivity : No dangerous reactions known under normal conditions of use.

5.3. Advice for firefighters

- Precautionary measures fire : Keep away from heat, hot surfaces, sparks, open flames and other ignition sources. No smoking.
- Firefighting instructions : Use water spray or fog for cooling exposed containers. Exercise caution when fighting any chemical fire. Do not dispose of fire-fighting water in the environment.
- Protection during firefighting : Do not enter fire area without proper protective equipment, including respiratory protection.
- Other information : Dense smoke emitted when burned without sufficient oxygen.

SECTION 6: Accidental release measures

6.1. Personal precautions, protective equipment and emergency procedures

- General measures : Evacuate area. Ventilate area. Keep upwind. Spill should be handled by trained clean-up crews properly equipped with respiratory equipment and full chemical protective gear (see Section 8).

6.1.1. For non-emergency personnel

- Protective equipment : Wear Protective equipment as described in Section 8.
- Emergency procedures : Evacuate unnecessary personnel.

6.1.2. For emergency responders

- Protective equipment : Wear suitable protective clothing, gloves and eye or face protection. Approved supplied-air respirator, in case of emergency.

6.2. Environmental precautions

Prevent entry to sewers and public waters. Notify authorities if liquid enters sewers or public waters. Avoid release to the environment.

6.3. Methods and material for containment and cleaning up

- For containment : Contain any spills with dikes or absorbents to prevent migration and entry into sewers or streams.
- Methods for cleaning up : Ensure there is adequate ventilation. Soak up spills with inert solids, such as clay or diatomaceous earth as soon as possible. This material and its container must be disposed of in a safe way, and as per local legislation.

6.4. Reference to other sections

See Sections 8 and 13.

Aussie Membrane 520

Safety Data Sheet

Prepared according to Federal Register / Vol. 77, No. 58 / Monday, March 26, 2012 / Rules and Regulations

SECTION 7: Handling and storage

7.1. Precautions for safe handling

Precautions for safe handling : Do not handle until all safety precautions have been read and understood. Use only in well-ventilated areas. Do not get in eyes, on skin, or on clothing. Wash hands and other exposed areas with mild soap and water before eating, drinking or smoking and when leaving work. Keep away from sources of ignition - No smoking.

7.2. Conditions for safe storage, including any incompatibilities

Technical measures : Take precautionary measures against static discharge.
Storage conditions : Store in a dry, cool and well-ventilated place. Keep the container tightly closed. Protect from sunlight. Prevent exposure to water. Store away from flammable substances. Containers which are opened should be properly resealed and kept upright to prevent leakage.

SECTION 8: Exposure controls/personal protection

8.1. Control parameters

Phosphonic acid, (2-ethylhexyl)-, bis(2-ethylhexyl) ester (126-63-6)

Remark (ACGIH)	OELs not established
Remark (OSHA)	OELs not established

8.2. Exposure controls

Appropriate engineering controls : Provide adequate general and local exhaust ventilation. Use process enclosures, local exhaust ventilation, or other engineering controls to control airborne levels below recommended exposure limits. Use explosion-proof equipment with flammable materials. Ensure adequate ventilation, especially in confined areas.

Personal protective equipment : Gloves. Protective goggles. Protective clothing.



Hand protection : Use gloves chemically resistant to this material when prolonged or repeated contact could occur. Gloves should be classified under Standard EN 374 or ASTM F1296. Suggested glove materials are: Neoprene, Nitrile/butadiene rubber, Polyethylene, Ethyl vinyl alcohol laminate, PVC or vinyl. Suitable gloves for this specific application can be recommended by the glove supplier.

Eye protection : Wear eye protection, including chemical splash goggles and a face shield when possibility exists for eye contact due to spraying liquid or airborne particles.

Skin and body protection : Wear long sleeves, and chemically impervious PPE/coveralls to minimize bodily exposure.

Respiratory protection : Use NIOSH-approved dust/particulate respirator. Where vapor, mist, or dust exceed PELs or other applicable OELs, use NIOSH-approved respiratory protective equipment.

SECTION 9: Physical and chemical properties

9.1. Information on basic physical and chemical properties

Physical state : Liquid
Appearance : Sticky liquid.
Color : Grey.
Odor : No data available
Odor Threshold : No data available
pH : No data available
Relative evaporation rate (butylacetate=1) : No data available
Melting point : No data available
Freezing point : No data available
Boiling point : No data available
Flash point : No data available
Auto-ignition temperature : No data available
Decomposition temperature : No data available
Flammability (solid, gas) : No data available
Vapour pressure : No data available
Relative vapour density at 20 °C : No data available
Relative density : No data available
Solubility : Insoluble in water.
Log Pow : No data available

Aussie Membrane 520

Safety Data Sheet

Prepared according to Federal Register / Vol. 77, No. 58 / Monday, March 26, 2012 / Rules and Regulations

Log Kow	: No data available
Viscosity, kinematic	: No data available
Viscosity, dynamic	: No data available
Explosive properties	: Product does present an explosion hazard.
Oxidising properties	: No data available
Explosive limits	: No data available

9.2. Other information

No additional information available

SECTION 10: Stability and reactivity

10.1. Reactivity

No dangerous reactions known under normal conditions of use.

10.2. Chemical stability

Stable under recommended handling and storage conditions (see section 7).

10.3. Possibility of hazardous reactions

None known.

10.4. Conditions to avoid

Heat. Open flame. Sparks.

10.5. Incompatible materials

Strong oxidizing agents. Nitric acid. Sulfuric Acid. Lead. acetic anhydride. Nitrobenzene. Ethylene oxide. hydrofluoric acid. Chlorine.

10.6. Hazardous decomposition products

Carbon oxides (CO, CO₂). Water vapor. Volatile organic compounds.

SECTION 11: Toxicological information

11.1. Information on toxicological effects

Acute toxicity	: Not classified
Skin corrosion/irritation	: Causes skin irritation.
Serious eye damage/irritation	: Causes serious eye irritation.
Respiratory or skin sensitisation	: May cause an allergic skin reaction.
Germ cell mutagenicity	: Not classified
Carcinogenicity	: Not classified
Reproductive toxicity	: Not classified
Specific target organ toxicity (single exposure)	: Not classified
Specific target organ toxicity (repeated exposure)	: Not classified.
Aspiration hazard	: Not classified
Symptoms/injuries after inhalation	: May cause respiratory irritation.
Symptoms/injuries after skin contact	: Causes skin irritation. May cause an allergic skin reaction.
Symptoms/injuries after eye contact	: Causes serious eye irritation.
Symptoms/injuries after ingestion	: May cause gastrointestinal irritation.

SECTION 12: Ecological information

12.1. Toxicity

Ecology - general : May cause long-term adverse effects in the environment.

12.2. Persistence and degradability

Aussie Membrane 520	
Persistence and degradability	Heavily removable from water.

12.3. Bioaccumulative potential

Aussie Membrane 520	
Bioaccumulative potential	May be accumulated in organism.

12.4. Mobility in soil

No additional information available

12.5. Other adverse effects

No additional information available

Aussie Membrane 520

Safety Data Sheet

Prepared according to Federal Register / Vol. 77, No. 58 / Monday, March 26, 2012 / Rules and Regulations

SECTION 13: Disposal considerations

13.1. Waste treatment methods

- Waste treatment methods : Obtain the consent of pollution control authorities before discharging to wastewater treatment plants.
- Waste disposal recommendations : Dispose in a safe manner in accordance with local/national regulations. Do not allow the product to be released into the environment.

SECTION 14: Transport information

In accordance with DOT

Not hazardous for transport

Additional information

Other information : No supplementary information available.

Transport by sea

No additional information available

Air transport

No additional information available

SECTION 15: Regulatory information

15.1. US Federal regulations

Aussie Membrane 520

All chemical substances in this product are listed in the EPA (Environment Protection Agency) TSCA (Toxic Substances Control Act) Inventory or are exempt

SARA Section 311/312 Hazard Classes : Immediate (acute) health hazard

15.2. International regulations

No additional information available.

15.3. US State regulations

This product does not contain any substances known to the state of California to cause cancer and/or reproductive harm

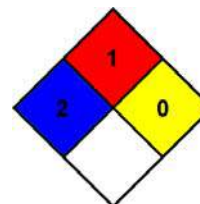
Talc (14807-96-6)

U.S. - Massachusetts - Right To Know List
U.S. - New Jersey - Right to Know Hazardous Substance List
U.S. - Pennsylvania - RTK (Right to Know) List

SECTION 16: Other information

- Indication of changes : Revision 1.0: New SDS Created.
- Revision date : 03/14/2016
- Other information : Author: BCS.

- NFPA health hazard : 2 - Intense or continued exposure could cause temporary incapacitation or possible residual injury unless prompt medical attention is given.
- NFPA fire hazard : 1 - Must be preheated before ignition can occur.
- NFPA reactivity : 0 - Normally stable, even under fire exposure conditions, and are not reactive with water.



HMIS III Rating

- Health : 2
- Flammability : 1
- Physical : 0
- Personal Protection :

This information is based on our current knowledge and is intended to describe the product for the purposes of health, safety and environmental requirements only. It should not therefore be construed as guaranteeing any specific property of the product