

# RIVERCREST® WALL

THICKNESS 114MM  
REGION CHICAGO



UNILOCK® Exclusive Technologies

ENDURACOLOR



APPLICATIONS

Note: Not all sizes are suitable for every application.



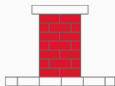
Fire Feature



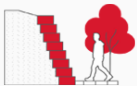
Garden Wall



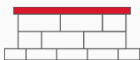
Outdoor Kitchen



Pillars



Retaining Wall



Seat Wall



Water Features

COLORS

BUFF  
FINISH: FLAGSTONE



JUMPER UNIT 1  
200mm x 114mm x 240mm  
7 7/8" x 4 1/2" x 9 1/2"



JUMPER UNIT 2/3  
310mm x 114mm x 240mm  
12 1/4" x 4 1/2" x 9 1/2"



JUMPER UNIT 4  
420mm x 114mm x 240mm  
16 5/8" x 4 1/2" x 9 1/2"



CORNER JUMPER  
450mm x 114mm x 240mm  
17 3/4" x 4 1/2" x 9 1/2"

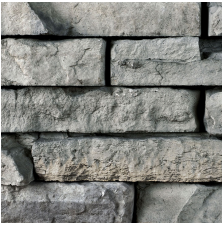


PILLAR UNIT 20"X20"  
500mm x 114mm x 500mm  
19 3/4" x 4 1/2" x 19 3/4"



WALL RADIUS  
1,060mm x 114mm x 225mm  
41 3/4" x 4 1/2" x 8 7/8"

COASTAL SLATE  
FINISH: FLAGSTONE



**JUMPER UNIT 1**  
200mm x 114mm x 240mm  
7 7/8" x 4 1/2" x 9 1/2"



**JUMPER UNIT 2/3**  
310mm x 114mm x 240mm  
12 1/4" x 4 1/2" x 9 1/2"



**JUMPER UNIT 4**  
420mm x 114mm x 240mm  
16 5/8" x 4 1/2" x 9 1/2"



**CORNER JUMPER**  
450mm x 114mm x 240mm  
17 3/4" x 4 1/2" x 9 1/2"



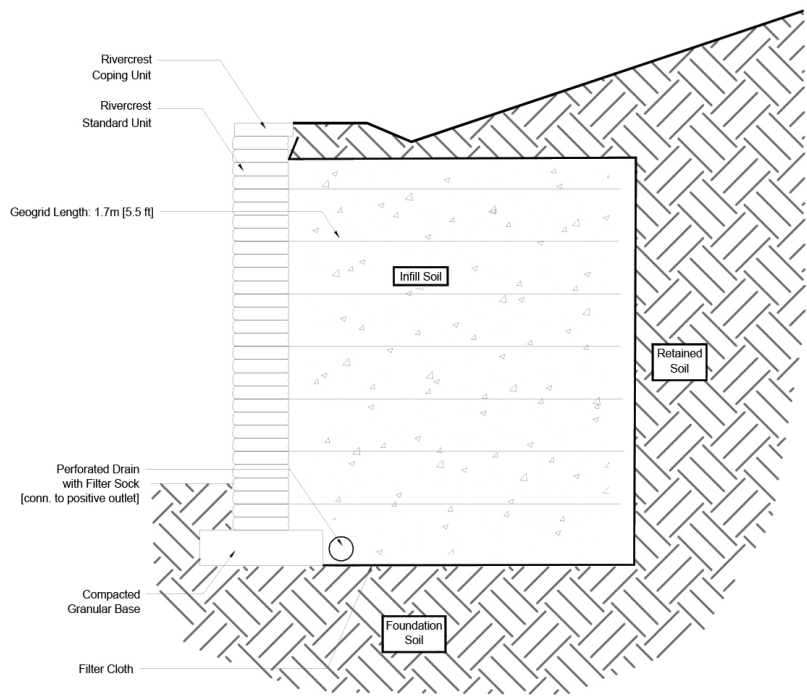
**PILLAR UNIT 20"X20"**  
500mm x 114mm x 500mm  
19 3/4" x 4 1/2" x 19 3/4"



**WALL RADIUS**  
1,060mm x 114mm x 225mm  
41 3/4" x 4 1/2" x 8 7/8"

TYPICAL CROSS SECTION

Note: Base, screed bed, infill aggregates and or reinforcements may vary based on project requirements or as specified by engineer.



PACKAGING

	(57) RANDOM RANDOM BUNDLE	(57) CORNER RANDOM BUNDLE	(114) RANDOM JUMPER RANDOM BUNDLE	CORNER JUMPER	PILLAR UNIT 20"X20"	WALL RADIUS
UNIT THICKNESS (MM)	57	57	114	114	114	114
LAYERS PER BUNDLE	8	4	4	2	2	4
FCFT PER BUNDLE	24.30	16.21	13.73	13.55	-	-
FCFT PER LAYER	3.04	4.05	3.43	6.77	-	-
FCFT PER UNIT	0.19	0.41	0.34	0.85	-	-
UNITS PER BUNDLE	128	40	40	16	4	12
UNITS PER LAYER	16	10	10	8	2	3
LBS PER BUNDLE	1,990	1,173	1,631.06	972.85	881.84	1,402.13
LBS PER LAYER	248.75	293.25	407.76	486.42	440.92	350.53
LBS PER UNIT	15.55	29.33	40.78	60.80	220.46	116.84

## INSTALLATION NOTES

---

Rivercrest Wall is a unique residential and commercial landscape wall block featuring a water-worn ledgerstone appearance. The special integrated alignment system makes installation simple and painless for the professional landscaper or DIY. The unique shape and array of unit sizes & textures allows you to create virtually any shape or pattern you desire.

Applications – Design and build projects such as planters, steps, grill islands, pillars, seat walls and water features. Can be used for straight and curved installations (Radius 5' is the tightest radius).

Capacity – Gravity walls up to 24" (60cm). Geogrid reinforced walls up to 6 ft. (1.8m).

Recommended Base Stabilization – one layer of DriveGrid™ stabilization grid between subgrade and base material. Use under Standard Base or Permeable Base.

Standard Base – Min. 6" – 8" of ¾" Crusher Run gravel (any road base standard in accordance with ASTM-D2940) compacted to 98% Standard Proctor Density (SPD).

Alternative Permeable Base – Min. 6" – 8" of ¾" clear open-graded stone compacted to achieve full particle lock-up and consolidation. (Clear open-graded does not compact but does consolidate slightly by rattling the particles together.)

Leveling – Leveling retaining wall blocks directly on top of gravel is tedious and generally does not yield the best results. U-Grip Base units or universal base pads are recommended under all Unilock walls for improved accuracy and speedier installation. Additional benefits include long term structural integrity and an overall better appearance. Poured concrete leveling pads, reinforced with rebar, are also a great way to accomplish leveling, particularly for larger installations. You must ensure that the concrete is poured and finished perfectly in order to achieve a good visual appearance.

Connection – features a unique integrated alignment connection. Use appropriate concrete adhesive for connection between units where required. Always read adhesive manufacturers' directions prior to gluing.

Handling – No specific handling instructions.

Coping - This wall requires coping. Choose Rivercrest Coping or any of our natural stone coping options. Install with tight joints or 3/16" gap between units and amend with an exterior latex caulking. Cutting may be required; a diamond blade saw is required to cut coping properly. Glue all coping using a specially formulated concrete adhesive that is strong and will not break down over time. Always read adhesive manufacturers' directions prior to gluing.

---

Unilock reserves the right to change product information without notice.

PDF Generated May 15, 2025





## DISTRIBUTED BY:

ASP Enterprises, Quick Supply Co., Bowman Construction Supply & Cascade Geosynthetics are sister companies that serve customers from the Midwest, across the Rocky Mountains to the Pacific Northwest. Together we supply customers with a variety of environmental construction materials including erosion and sediment control, geosynthetics, stormwater management, drainage products, hardscapes and outdoor living, revegetation and soil amendments, waterproofing solutions and more.



We are full line distributors of environmental construction materials for all project types. Contact us for assistance with a project or a quote on products. From specification recommendations and project development to installation and completion, we're here to help with all of your site solution needs. Our warehouses are stocked with readily available inventory and we offer same and next-day deliveries.

### ASP ENTERPRISES

[aspent.com](http://aspent.com)

[salesasp@aspent.com](mailto:salesasp@aspent.com)

#### ST. LOUIS

1099 Cassens Industrial Ct.  
St. Louis, MO 63026  
636-343-4357

#### KANSAS CITY

5301 E 59th St.  
Kansas City, MO 64130  
816-554-1191

#### OMAHA

15263 Cooper St.  
Omaha, NE 68138  
402-861-8579

#### WICHITA

316-393-1554

#### WENTZVILLE

1906 E Service Rd. HWY 61 N  
Wentzville, MO 63385  
636-445-9090

### QUICK SUPPLY CO.

[quicksupplyco.com](http://quicksupplyco.com)

[salesquick@quicksupplyco.com](mailto:salesquick@quicksupplyco.com)

#### DES MOINES

6620 NW Toni Dr.  
Des Moines, IA 50313  
515-289-1271

### BOWMAN CONSTRUCTION SUPPLY

[bowmanconstructionsupply.com](http://bowmanconstructionsupply.com)

[salesbcs@bowmanconstructionsupply.com](mailto:salesbcs@bowmanconstructionsupply.com)

#### DENVER

10801 E. 54th Ave.  
Denver, CO 80239  
303-696-8960

#### COLORADO SPRINGS

1830 Palmer Park Blvd.  
Colorado Springs, CO 80909  
719-257-7840

#### LOVELAND

4495 Woods Ave.  
Loveland, CO 80538  
970-535-0863

### CASCADE GEOSYNTHETICS

[cascadegeos.com](http://cascadegeos.com)

[salescascade@cascadegeos.com](mailto:salescascade@cascadegeos.com)

#### PORTLAND

3610 N. Suttle Rd. Bldg B  
Portland, OR 97217  
971-339-1020

#### SALT LAKE CITY

425 N. Neil Armstrong Rd.  
Salt Lake City, UT 84116  
435-276-0820

**GEOSYNTHETICS | EROSION CONTROL | STORMWATER MANAGEMENT  
REVEGETATION & SOIL AMENDMENTS | SEDIMENT CONTROL | HARDSCAPES**