



StormSafe

Modular Stormwater Filtration System



Maintenance Guide

Vault and Manhole Configurations

Manufacturer:

Fabco Industries, Inc
66 Central Avenue
Farmingdale, NY 11735
Phone: (631)-393-6024

Caution:

The StormSafe should be maintained by trained individuals who are familiar with all confined space entry, disposal procedures and traffic safety regulations.

1.0 Inspecting the StormSafe

The StormSafe Cartridge System, like any other stormwater treatment device requires maintenance to remain efficient as a stormwater filter. Fabco Industries highly recommends inspecting the system within the first year after installation following the steps below.

Inspection and cleaning should be performed only after NO rainfall for at least 24 hours.

If working in the street, proper safety equipment should be worn, including but not limited to a hardhat, vest, gloves and eye protection, and local traffic safety rules & regulations should be followed.

Begin by removing the manhole access covers located over the inlet forebay, cartridge filtration deck and effluent chamber. Allow several minutes for the system to vent.

CAUTION: Grates can be extremely heavy. Some type of lifting mechanism is highly recommended.

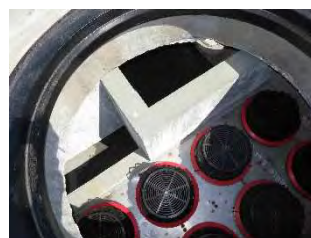


Visually inspect all chambers for heavy sediment, trash and debris loading. A battery powered flashlight or droplight is recommended for thorough inspection.

Some telltale signs that cleaning or filter replacement is necessary are as follows:

- ☐ Waterline marks within a couple inches of the top of the bypass weir.
- ☐ Standing water in the outlet chamber because it was designed to drain down after a storm.
- ☐ Cannot see the tops of the cartridges because they are covered with sediment, which indicates a sediment depth on top of the deck of greater than 6 inches.

Record observations and comments on the maintenance log sheet. In addition, the use of digital photographs and/or sketches may be warranted to maintain the most accurate historical records.



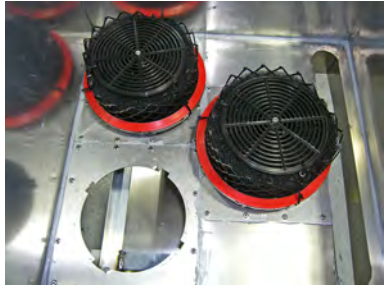


StormSafe Vault and Manhole Maintenance Guide





2.0 Cleaning Frequency

The StormSafe Cartridge System requires periodic cleaning. There are no hard and fast rules in this regard. Small units and installation sites with higher than expected sediment loads or areas with significant trees and foliage require more maintenance. In general, Fabco Industries recommends cleaning out the unit(s) at least once per year by removing the debris, sand and silt from the inlet forebay and cartridge chamber with a vacuum assisted device and changing out the cartridges.

3.0 Cleaning out the StormSafe:

<p>Be sure to follow all safety and traffic control protocols.</p> <p>With the manhole access covers or hatches removed, the StormSafe is available for cleaning.</p> <p>Remove the sediment and debris from the system. This can be done manually or with a vacuum device.</p>	
<p>With the debris and sediment removed, the filter cartridge(s) will be visible on the deck surface. Fabco suggests removing the cartridge(s) from the StormSafe and removing any loose debris, sediment, trash from the blue foam pre-filter.</p> <p>To remove the cartridge(s) reach down into the basin and firmly grasp the plastic outer rim of the cartridge bod just below the foam. Twist the cartridge body counter-clock-wise about $\frac{1}{4}$ turn until it stops. Lift the cartridge straight up to remove.</p>	
<p>The filter cartridge(s) install through a hole in the bottom of the support deck or collection basin. The hole has four (4) slots that accept 4 tabs molded into the underside of the cartridge body.</p>	

StormSafe Vault and Manhole Maintenance Guide

<p>Insert the filter cartridge down through the hole in the base of the unit. The colored ring on the cartridge should be facing upwards. Push the cartridge all the way through the hole until it rests on the bottom. Slowly turn the cartridge in a clock-wise direction until the tabs align with the slots and the cartridge body drops about ¼' further down.</p>	
<p>Once the tabs fall through the slots, continue turning firmly in a clock- wise direction until the tabs contact the STOPS. The cartridge is now installed.</p>	 
<p>With the StormSafe chambers and new cartridges installed the maintenance process is complete. Re-install the manhole access covers and demobilize.</p>	

4.0 Disposal

All liquid, oils, sediment, debris, trash and other accumulates removed from the StormSafe must be handled and disposed of in accordance with local, state and federal regulations.

Disposal considerations must be part of a well-planned and scheduled maintenance regime. Solid waste disposal can typically be coordinated with a local landfill, whereas liquid waste can be disposed of at either a wastewater treatment plant, or a municipal vacuum truck decant facility.



5.0 Selecting replacement cartridges

The Fabco filter cartridges used in the StormSafe product are designed primarily to capture: floating materials, sediments and suspended solids and emulsified products such as hydrocarbon compounds, dissolved heavy metals, nutrients (P&N) and pathogens (bacteria). Before ordering your cartridges make sure you select the correct type. Each cartridge type can be identified by a colored “Ring” located at the top of the cartridge.

Part Number	Targeted Pollutant	Ring Color
9718-1	Standard Cartridge Good All-purpose cartridge for common surface runoff that may contain a little bit of everything.	Red
9718-2	Pathogen Cartridge 2x's more pathogen treatment Vs. Std Cartridge. Use near sensitive water ways to keep beaches and shell fishing areas open.	Yellow
9718-3	Hydrocarbon Cartridge 25% more hydrocarbon filter media Vs Std cartridge. Excellent for vehicle or maintenance related applications.	Blue
9718-4	Heavy Metals Cartridge Uses unique FABLITE filter media for HV metals. Suggested for industrial usage where persistent HV metals have been identified in surface runoff.	Grey
9718-5	Standard Short Cartridge Reduced height version of std Cart.	Mint
9718-6	Nutrient Cartridge Uses proprietary FABPHOS media for nutrients. Highly effective on the critical dissolved Ortho-Phosphates. Helps reduce algae blooms keeping the water clean and healthy.	Green
9718-7	High Flow Cartridge Good all-purpose cartridge More high flow open cell foam layers than std Cart.	Red with Black mesh

<u>Inspection and Maintenance Log-</u> <u>Sheet</u> StormSafe Cartridge Vault or Manhole System	
Maintenance Company	
Company Name:	
Onsite Technician:	
Contact Phone No:	
Treatment System	
Date of Maintenance:	StormSafe Model
Vault\Manhole Location:	
<u>Maintenance Item</u>	<u>Comments</u>
Water Depth (prior to maintenance) in forebay:	
Sediment Depth (prior to maintenance) in forebay:	
Sediment Depth (prior to maintenance) on cartridge deck:	
Structural Damage:	
Maintenance Performed:	
Additional Work Required:	
Structural Repairs:	



Bowman
Construction
Supply Inc.



Quick
Supply Co.



Cascade
GEOSYNTHETICS

LOCATIONS & CONTACT INFO

ASP ENTERPRISES

aspent.com
salesasp@aspent.com

BOWMAN CONSTRUCTION SUPPLY

bowmanconstructionsupply.com
salesbcs@bowmanconstructionsupply.com

QUICK SUPPLY CO.

quicksupplyco.com
salesquick@quicksupplyco.com

CASCADE GEOSYNTHETICS

cascadegeos.com
salescascade@cascadegeos.com

St. Louis, MO 636.343.4357
Omaha, NE 402.861.8579
Kansas City, MO 816.554.1191
Wichita, KS 316.393.1554

Denver, CO 303.696.8960
Colorado Springs, CO 719.257.7840
Loveland, CO 970.535.0863

Des Moines, IA
515.289.1271

Portland, OR
971.339.1020

SOLUTIONS WE SUPPLY

GEOSYNTHETICS

Filter Fabrics

Stabilization Fabrics

Geogrids

- Road Grids
- Wall Grids
- Slope Stabilization

Specialty Fabrics

Composite Geomembranes

- GCLs, PVC, HDPE, LLDPE, EPDM, Granular Bentonite

SEDIMENT CONTROL

Inlet Protection

- Grated Inlet, Curb Inlet, Area Inlet Protection

Ditch Checks

- Triangle Silt Dike
- GeoRidge

Perimeter Protection

- High and Low-Porosity Silt Fence, Straw Wattles, Silt Socks
- Safety Fence

Flocculants & Water Treatment

- Polymer-Based & Natural Flocculants

Sediment Basin Skimmers

Dewatering Bags

Trackout Control

- FODS
- Rumble Grates

Turbidity Curtains

EROSION CONTROL

Basic Hydraulically Applied Mulches

- Wood
- Paper
- Blends
- Straw

High-Performance Hydraulically

Applied Products

- BFM
- FGM
- Additives & Tackifiers

Temporary Erosion Control Blankets

- Coir & Jute Mat/Nettings
- Short-Term ECBs
- Extended-Term ECBs

Permanent Erosion Control Blankets

- Turf Reinforcement Mats
- HP-TRMs
- Anchor Reinforced Vegetation System

Structural BMPs

- Transition Mats
- Geoweb Cellular Confinement
- Composite Vegetated Armor System
- Flex MSE Vegetated Wall System
- Articulated Concrete Block
- Gabions
- Grout-Filled Geotextile Mats

Vegetation Establishment

- Native Seed & Turf Seed
- Fertilizers
- Organic Soil Additives
- Stratavault Soil Cells

STORMWATER MANAGEMENT

Water Quality

- Inlet Filter Boxes
- Pre-Treatment Chamber
- Nutrient Separating Baffle Boxes
- High-Flow Biofiltration Media
- Hydrodynamic Separators
- Stratavault

Water Quantity

- Modular Underground Storage Systems
- Chamber Detention Systems

Drainage

- HDPE Swale Liner
- Pipe & Fittings
- Drainage Composites
- Strip Drain

Inlet Structures

- PVC
- Drain Basins, In-Line Drains
- Landscape

Permeable Pavers

- Permeable Articulating Concrete Block
- Grass Pavers
- Gravel Pavers
- Concrete Pavers

SPECIALTY

Natural & Synthetic Coir Fiber Logs

Vegetated Reinforced Soil Slopes

Soil Anchors

Root Barrier System

AquaBlok

Muscle Wall

We are full line distributors of construction materials for all project types. Contact us for assistance with a project. From specification and development to installation and completion, we're here to help with all of your site solution needs.

**GEOSYNTHETICS | EROSION CONTROL | STORMWATER MANAGEMENT
SEDIMENT CONTROL | REVEGETATION & SOIL AMENDMENTS**