

MATERIAL PROPERTY DATA SHEET

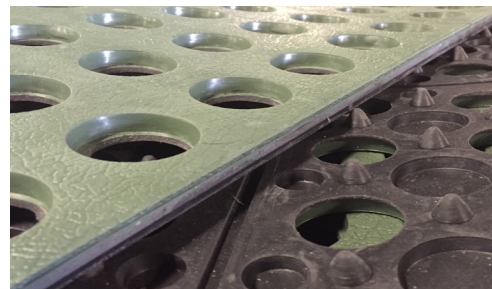


ShoreMax®

Permanent • Flexible • Transition Mat

DESCRIPTION

The Western Green ShoreMax Transition Mat shall be a resilient rubber mat with surface texture and multi-nib backing. It shall have a large hole drainage system with aperture openings approximately 1.25 in (3.2 cm) in diameter. ShoreMax mat is a transition mat used as bio-technical replacement for hard armor. ShoreMax mat is mechanically anchored and is a flexible matting that can be installed in transitional areas susceptible to soil scour. ShoreMax mat can provide erosion control in highly erosive areas, including shorelines, and can be used in conjunction with rolled erosion control products.



Material Content

| | | |
|---------|-----------------------------------|---|
| Matting | 100% UV-stabilized natural rubber | 2.00 lb/ft ² (10 kg/m ²) |
| Color | Dark Green | |

Standard Roll Sizes

| | | |
|--------------------|---------|------------------------|
| Width ³ | 3 ft | (1.0 m) |
| Length | 5 ft | (1.5 m) |
| Weight ± 10% | 30 lb | (13.6 kg) |
| Area | 1.67 SY | (1.39 m ²) |

Approvals & Classification

| | |
|----------------|-----|
| Classification | N/A |
| TTI Approvals | N/A |
| NTPEP Number | N/A |

Disclaimer: The information contained herein may represent product index data, performance ratings, bench scale testing or other material utility quantifications. Each representation may have unique utility and limitations. Every effort has been made to ensure accuracy, however, no warranty is claimed and no liability shall be assumed by Western Green or its affiliates regarding the completeness, accuracy or fitness of these values for any particular application or interpretation. While testing methods are provided for reference, values shown may be derived from interpolation or adjustment to be representative of intended use. For further information, please feel free to contact Western Green.

©2022, Western Green is a registered trademark from Western Green. Certain products and/or applications described or illustrated herein are protected under one or more U.S. patents. Other U.S. patents are pending, and certain foreign patents and patent applications may also exist. Trademark rights also apply as indicated herein. Final determination of the suitability of any information or material for the use contemplated, and its manner of use, is the sole responsibility of the user. Printed in the U.S.A.

| Index Property | Test Method | Typical | |
|--------------------------|-------------|-------------------------|--------------------------|
| Thickness | ASTM D6525 | 0.75 in. | (19 mm) |
| Mass/Unit Area | ASTM D6566 | 2.00 lbs/sy | (10 kg/sm) |
| Tensile Strength – MD | ASTM D6818 | 606 lbs/ft | (9.0 kN/m) |
| Tensile Strength – TD | ASTM D6818 | 625 lbs/ft | (9.25 kN/m) |
| Elongation - MD | ASTM D6818 | 100% | |
| Elongation – TD | ASTM D6818 | 125% | |
| UV Stability | ASTM D4355 | 90% @1000 hr | |
| Light Penetration | ASTM D6567 | 20% | |
| Biomass Improvement | ASTM D7322 | 240% | |
| Specific Gravity/Density | ASTM D792 | 1.63 oz/in ³ | (1.5 g/cm ³) |
| Flexural Rigidity | ASTM D6575 | 1.97 in-lb | |

Design Parameters

| TRM Underlayment | Unvegetated | Vegetated ³ |
|----------------------------------|---------------------|------------------------|
| SC250 Permissible Shear Velocity | 7.5 psf 18 fps | 10.0 psf 18 fps |
| C350 Permissible Shear Velocity | 8.0 psf 19 fps | 12.0 psf 20 fps |
| P550 Permissible Shear Velocity | 8.5 psf 19.5 fps | 14.0 psf 25 fps |

NTPEP ASTM D6460 Large Scale Channel*

| | |
|--------------------------|-----------------------|
| Unvegetated Shear Stress | 8.6 psf (412 Pa) |
| Vegetated Shear Stress | > 12.5 psf (599 Pa) |
| Unvegetated Velocity | 19.5 fps (5.95 m/s) |
| Vegetated Velocity | > 26.0 fps (7.93 m/s) |

* Testing conducted with ShoreMax installed over North American Green P550 Turf Reinforcement Mat

Rev. 4.2023

Scan for additional and updated product information, or [click here](#).





Bowman
Construction
Supply Inc.



Quick
Supply Co.



Cascade
GEOSYNTHETICS

LOCATIONS & CONTACT INFO

ASP ENTERPRISES

aspent.com
salesasp@aspent.com

BOWMAN CONSTRUCTION SUPPLY

bowmanconstructionsupply.com
salesbcs@bowmanconstructionsupply.com

QUICK SUPPLY CO.

quicksupplyco.com
salesquick@quicksupplyco.com

CASCADE GEOSYNTHETICS

cascadegeos.com
salescascade@cascadegeos.com

St. Louis, MO 636.343.4357
Omaha, NE 402.861.8579
Kansas City, MO 816.554.1191
Wichita, KS 316.393.1554

Denver, CO 303.696.8960
Colorado Springs, CO 719.257.7840
Loveland, CO 970.535.0863

Des Moines, IA
515.289.1271

Portland, OR
971.339.1020

SOLUTIONS WE SUPPLY

GEOSYNTHETICS

Filter Fabrics

Stabilization Fabrics

Geogrids

- Road Grids
- Wall Grids
- Slope Stabilization

Specialty Fabrics

Composite Geomembranes

- GCLs, PVC, HDPE, LLDPE, EPDM, Granular Bentonite

SEDIMENT CONTROL

Inlet Protection

- Grated Inlet, Curb Inlet, Area Inlet Protection

Ditch Checks

- Triangle Silt Dike
- GeoRidge

Perimeter Protection

- High and Low-Porosity Silt Fence, Straw Wattles, Silt Socks
- Safety Fence

Flocculants & Water Treatment

- Polymer-Based & Natural Flocculants

Sediment Basin Skimmers

Dewatering Bags

Trackout Control

- FODS
- Rumble Grates

Turbidity Curtains

EROSION CONTROL

Basic Hydraulically Applied Mulches

- Wood
- Paper
- Blends
- Straw

High-Performance Hydraulically

Applied Products

- BFM
- FGM
- Additives & Tackifiers

Temporary Erosion Control Blankets

- Coir & Jute Mat/Nettings
- Short-Term ECBs
- Extended-Term ECBs

Permanent Erosion Control Blankets

- Turf Reinforcement Mats
- HP-TRMs
- Anchor Reinforced Vegetation System

Structural BMPs

- Transition Mats
- Geoweb Cellular Confinement
- Composite Vegetated Armor System
- Flex MSE Vegetated Wall System
- Articulated Concrete Block
- Gabions
- Grout-Filled Geotextile Mats

Vegetation Establishment

- Native Seed & Turf Seed
- Fertilizers
- Organic Soil Additives
- Stratavault Soil Cells

STORMWATER MANAGEMENT

Water Quality

- Inlet Filter Boxes
- Pre-Treatment Chamber
- Nutrient Separating Baffle Boxes
- High-Flow Biofiltration Media
- Hydrodynamic Separators
- Stratavault

Water Quantity

- Modular Underground Storage Systems
- Chamber Detention Systems

Drainage

- HDPE Swale Liner
- Pipe & Fittings
- Drainage Composites
- Strip Drain

Inlet Structures

- PVC
- Drain Basins, In-Line Drains
- Landscape

Permeable Pavers

- Permeable Articulating Concrete Block
- Grass Pavers
- Gravel Pavers
- Concrete Pavers

SPECIALTY

Natural & Synthetic Coir Fiber Logs

Vegetated Reinforced Soil Slopes

Soil Anchors

Root Barrier System

AquaBlok

Muscle Wall

We are full line distributors of construction materials for all project types. Contact us for assistance with a project. From specification and development to installation and completion, we're here to help with all of your site solution needs.

GEOSYNTHETICS | EROSION CONTROL | STORMWATER MANAGEMENT
SEDIMENT CONTROL | REVEGETATION & SOIL AMENDMENTS