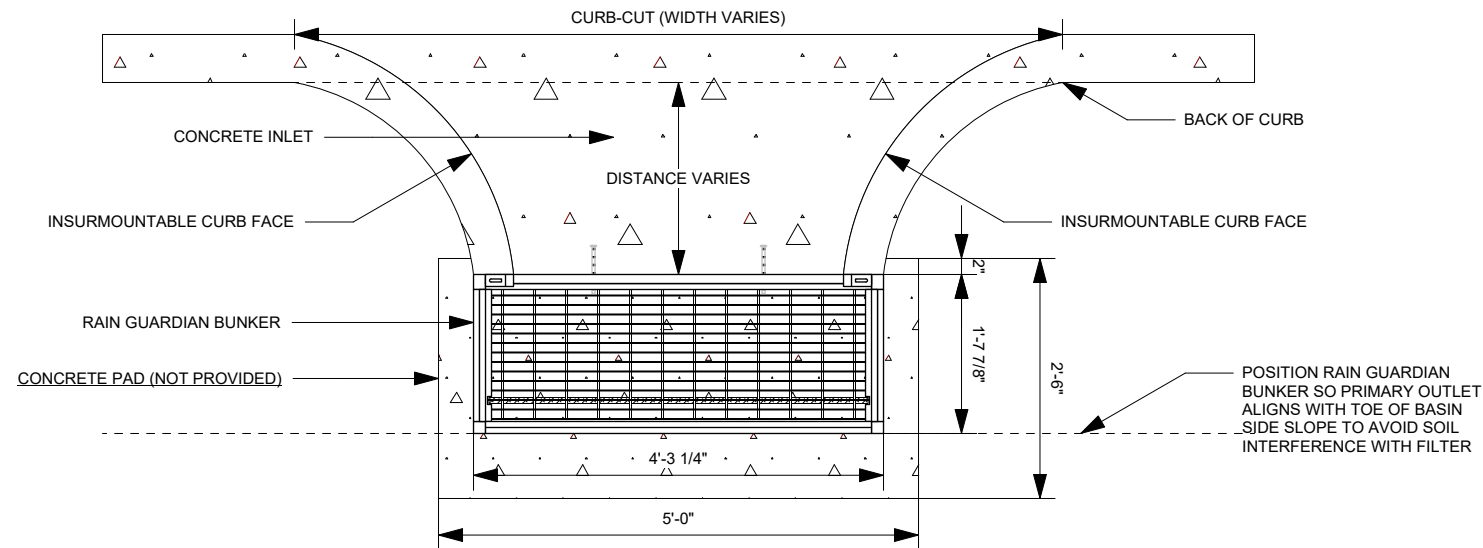
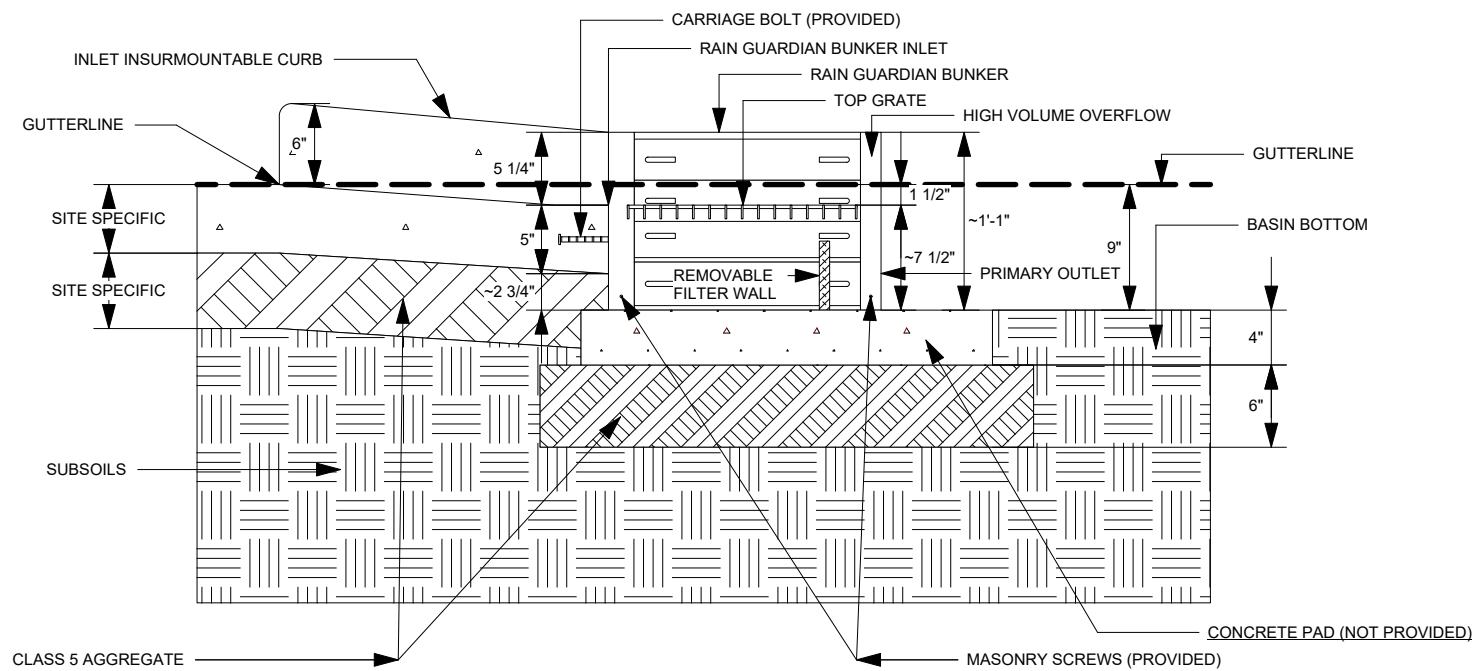


## PLAN VIEW



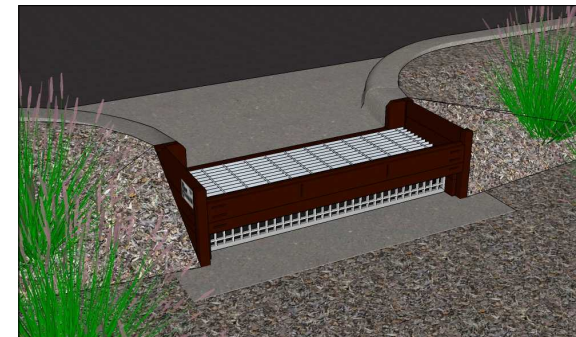
### ELEVATION VIEW



PLAN VIEW NOTES

1. INLET WIDTH AND DISTANCE BETWEEN BACK OF CURB AND RAIN GUARDIAN BUNKER MAY VARY WITH SITE CONDITIONS. INSTALLATION FLUSH WITH THE BACK OF THE CURB CAN ALSO BE COMPLETED WITH THE RAIN GUARDIAN BUNKER.
2. CONCRETE PAD (NOT PROVIDED) EXTENDS BEYOND THE FILTER WALL OF THE RAIN GUARDIAN BUNKER TO SERVE AS A SPLASH DISSIPATOR.

## 3D VIEWS



### ELEVATION VIEW NOTES

1. THE TOP OF THE CLASS 5 BASE (COMPACTED TO 95% STANDARD PROCTOR) IS PRECISELY 1' 1" BELOW THE GUTTERLINE ELEVATION.
2. THE TOP OF THE CONCRETE PAD (NOT PROVIDED) IS PRECISELY 9" BELOW THE GUTTERLINE.

## SPECIFICATIONS

1. CHAMBER CONSTRUCTED OF RECYCLED PLASTIC LUMBER (95%+) MANUFACTURED AND DESIGNED TO ASTM C1028, D6108, D6109, D6111, D6117, AND D6341 (54 LBS).  
2. TOP GALVANIZED METAL GRATE (35 LBS, 1" THICK) - 316 LB CONCENTRATED LOAD OR 158 LB/SQ-FT UNIFORM LOAD.

## INSTALLATION NOTES

- 1. INSTALL THE CONCRETE PAD (NOT PROVIDED) WITH A 1' 10" OFFSET FROM THE BACK OF THE CURB TO ACCOMMODATE THE CONCRETE INLET. THIS DISTANCE MAY VARY BASED ON SITE CONDITIONS, BUT CONSIDERATIONS SHOULD INCLUDE SLOPE OF THE INLET AND BASIN SIDE SLOPES ADJACENT TO THE RAIN GUARDIAN BUNKER. POSITION RAIN GUARDIAN BUNKER SO PRIMARY OUTLET ALIGNS WITH TOE OF BASIN SIDE SLOPE TO AVOID SOIL INTERFERENCE WITH REMOVABLE FILTER WALL. THE CONCRETE PAD SHOULD BE REINFORCED WITH REBAR.**
- 2. EXCAVATE 1' 7" BELOW THE GUTTERLINE ELEVATION (I.E. THE BIORETENTION OVERFLOW ELEVATION) TO ACCOMMODATE THE 9" PONDING DEPTH, 6" CLASS 5 AGGREGATE, AND 4" CONCRETE PAD TO WHICH THE RAIN GUARDIAN BUNKER WILL BE SECURED. THEREFORE, THE TOP OF THE FINISHED CONCRETE PAD IS PRECISELY 9" BELOW THE GUTTERLINE ELEVATION. THE TOP OF THE RAIN GUARDIAN BUNKER METAL GRATE WILL BE 7-1/2" ABOVE THE TOP OF THE CONCRETE PAD AND 1-1/2" BELOW THE GUTTERLINE ELEVATION TO ACCOMMODATE A SLOPED INLET FROM THE GUTTER TO THE RAIN GUARDIAN BUNKER.**
- 3. THE RAIN GUARDIAN BUNKER SHOULD BE POSITIONED 2" FROM THE EDGE OF THE CONCRETE PAD CLOSEST TO THE BACK OF THE CURB. THEREFORE, THE RAIN GUARDIAN BUNKER WILL BE 2' FROM THE BACK OF THE CURB.**
- 4. USING THE PILOT HOLE IN EACH OF THE FOUR CORNER POSTS, PREDRILL 5/32" HOLES INTO THE CONCRETE PAD WITH A 4-1/2" MASONRY BIT AND HAMMER DRILL.**
- 5. SECURE RAIN GUARDIAN BUNKER TO CONCRETE PAD WITH FOUR 3/16" X 2-3/4" MASONRY SCREWS (PROVIDED).**
- 6. INSTALL FRAMING FOR INLET BETWEEN RAIN GUARDIAN BUNKER AND BACK OF CURB. TOP ELEVATIONS OF THE FRAMING SHOULD MATCH THE TOP OF THE CURB ON THE STREET SIDE AND THE TOP OF THE RAIN GUARDIAN BUNKER ON THE BIORETENTION SIDE.**
- 7. WHEN POURING THE CONCRETE INLET, ENSURE THE CARRIAGE BOLTS ON THE RAIN GUARDIAN BUNKER ARE SURROUNDED BY AT LEAST 2" OF CONCRETE ON ALL SIDES.**
- 8. SIDE CURBS OF THE POURED INLET MUST HAVE AN INSURMOUNTABLE PROFILE TO PREVENT WATER FLOW FROM OVERTOPPING THE DOWNSTREAM SIDE OF THE INLET.**
- 9. WRAP CABLE THROUGH TOP METAL GRATE AND SECURE WITH PROVIDED CLAMP. ENSURE SUFFICIENT SLACK EXISTS IN CABLE TO ALLOW FOR GRATE REMOVAL AND PLACEMENT IN CONCRETE INLET DURING CLEANING. REMOVABLE FILTER WALL SHOULD BE INSTALLED WITH FILTER FABRIC FACING THE RAIN GUARDIAN BUNKER INLET.**



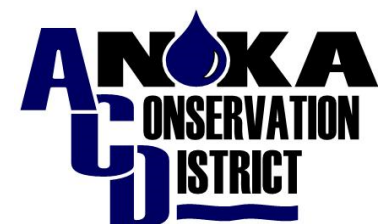
**NOTE: THE 9" RAIN GUARDIAN BUNKER IS A NON-STANDARD PRODUCT AND REQUIRES ADVANCED NOTICE WHEN ORDERING.**

**RAIN GUARDIAN BUNKER  
PRETREATMENT CHAMBER  
BIORETENTION PONDING DEPTH: 9"  
TYPICAL DETAIL**

## REVISION HISTORY

REV	BY	DATE	DESCRIPTION
A	MDH	08/13/2025	BUNKER - \$
SCALE		VARIABLE	
U.S. PATENT NOS.		8,501,016 AND 8,858,804	

DEVELOPED/MANUFACTURED BY:





**Bowman**  
Construction  
Supply Inc.



**Quick**  
Supply Co.



**Cascade**  
GEOSYNTHETICS

## LOCATIONS & CONTACT INFO

### ASP ENTERPRISES

aspent.com  
salesasp@aspent.com

### BOWMAN CONSTRUCTION SUPPLY

bowmanconstructionsupply.com  
salesbcs@bowmanconstructionsupply.com

### QUICK SUPPLY CO.

quicksupplyco.com  
salesquick@quicksupplyco.com

### CASCADE GEOSYNTHETICS

cascadegeos.com  
salescascade@cascadegeos.com

**St. Louis, MO** 636.343.4357  
**Omaha, NE** 402.861.8579  
**Kansas City, MO** 816.554.1191  
**Wichita, KS** 316.393.1554

**Denver, CO** 303.696.8960  
**Colorado Springs, CO** 719.257.7840  
**Loveland, CO** 970.535.0863

**Des Moines, IA**  
515.289.1271

**Portland, OR**  
971.339.1020

## SOLUTIONS WE SUPPLY

### GEOSYNTHETICS

Filter Fabrics

Stabilization Fabrics

Geogrids

- Road Grids
- Wall Grids
- Slope Stabilization

Specialty Fabrics

Composite Geomembranes

- GCLs, PVC, HDPE, LLDPE, EPDM, Granular Bentonite

### SEDIMENT CONTROL

Inlet Protection

- Grated Inlet, Curb Inlet, Area Inlet Protection

Ditch Checks

- Triangle Silt Dike
- GeoRidge

Perimeter Protection

- High and Low-Porosity Silt Fence, Straw Wattles, Silt Socks
- Safety Fence

Flocculants & Water Treatment

- Polymer-Based & Natural Flocculants

Sediment Basin Skimmers

Dewatering Bags

Trackout Control

- FODS
- Rumble Grates

Turbidity Curtains

### EROSION CONTROL

Basic Hydraulically Applied Mulches

- Wood
- Paper
- Blends
- Straw

High-Performance Hydraulically

Applied Products

- BFM
- FGM
- Additives & Tackifiers

Temporary Erosion Control Blankets

- Coir & Jute Mat/Nettings
- Short-Term ECBs
- Extended-Term ECBs

Permanent Erosion Control Blankets

- Turf Reinforcement Mats
- HP-TRMs
- Anchor Reinforced Vegetation System

Structural BMPs

- Transition Mats
- Geoweb Cellular Confinement
- Composite Vegetated Armor System
- Flex MSE Vegetated Wall System
- Articulated Concrete Block
- Gabions
- Grout-Filled Geotextile Mats

Vegetation Establishment

- Native Seed & Turf Seed
- Fertilizers
- Organic Soil Additives
- Stratavault Soil Cells

### STORMWATER MANAGEMENT

Water Quality

- Inlet Filter Boxes
- Pre-Treatment Chamber
- Nutrient Separating Baffle Boxes
- High-Flow Biofiltration Media
- Hydrodynamic Separators
- Stratavault

Water Quantity

- Modular Underground Storage Systems
- Chamber Detention Systems

Drainage

- HDPE Swale Liner
- Pipe & Fittings
- Drainage Composites
- Strip Drain

Inlet Structures

- PVC
- Drain Basins, In-Line Drains
- Landscape

Permeable Pavers

- Permeable Articulating Concrete Block
- Grass Pavers
- Gravel Pavers
- Concrete Pavers

### SPECIALTY

Natural & Synthetic Coir Fiber Logs

Vegetated Reinforced Soil Slopes

Soil Anchors

Root Barrier System

AquaBlok

Muscle Wall

We are full line distributors of construction materials for all project types. Contact us for assistance with a project. From specification and development to installation and completion, we're here to help with all of your site solution needs.

**GEOSYNTHETICS | EROSION CONTROL | STORMWATER MANAGEMENT  
SEDIMENT CONTROL | REVEGETATION & SOIL AMENDMENTS**