



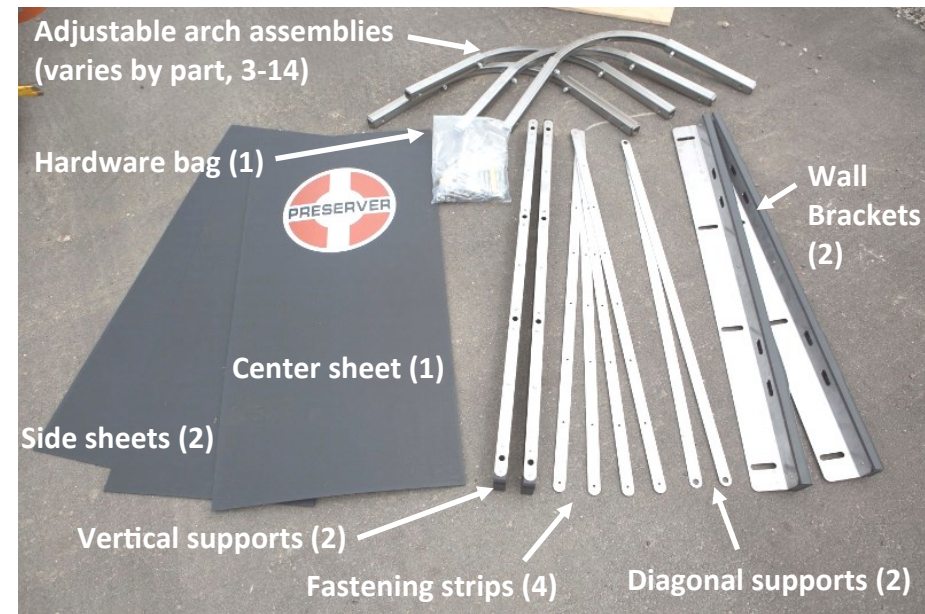
The Preserver™

Skimmer Installation Instructions

www.ThePreserver.com

Page 1/2

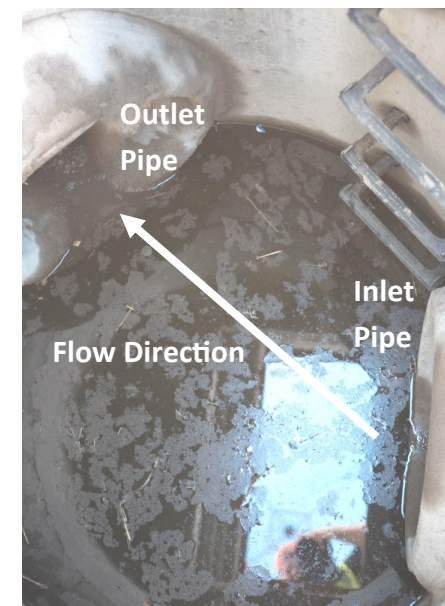
1) Confirm contents.



2) Gather required tools.



3) Locate outlet pipe.



4) Hold arch assembly horizontally at center of outlet, applying inward pressure toward the pipe. Adjust arch assembly to avoid obstructions and allow room for installation.

**Note:**

Keep inner-most arch holes available for vertical supports (Step 13).



5) Mark wall at outside edges of arch assembly. Remove arch assembly and adjust all remaining arch assemblies to match.



6) Make horizontal marks at center of outlet pipe, crossing bracket marks from previous step.



7) Measure and mark the center of the wall bracket on the back (pipe side) edge.



8) Align wall bracket with marks made in Steps 5, 6 and 7. Use level to ensure bracket is vertical prior to next step.

Pat. US 9,752,600 B2

Pat. CA 2,893,173

Questions? Call 877-773-0073

Installer is responsible for meeting all safety and confined space entry requirements.

PROUDLY MADE IN THE USA

QUALITY MATERIALS:

- 100% recycled HDPE
- Stainless steel brackets
- Stainless steel hardware



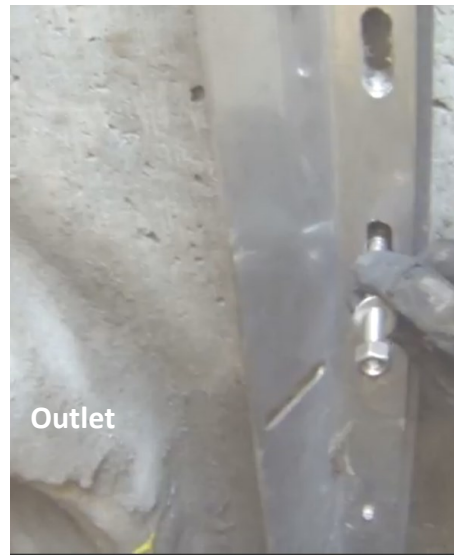
The Preserver™

Skimmer Installation Instructions

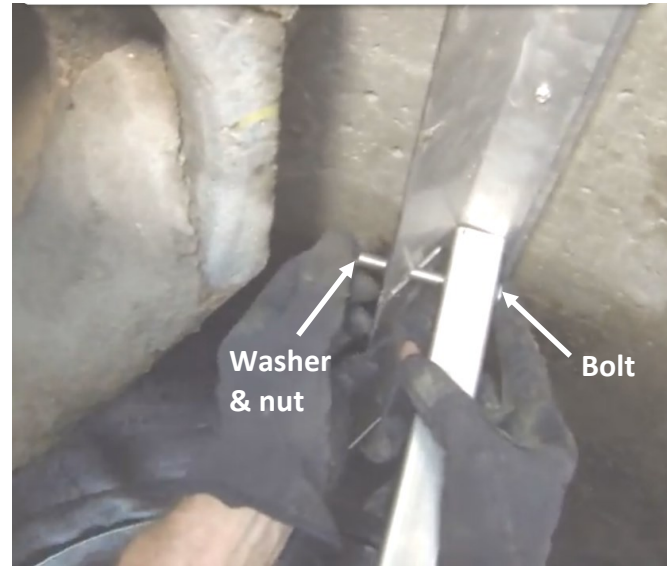
www.ThePreserver.com

Page 2/2

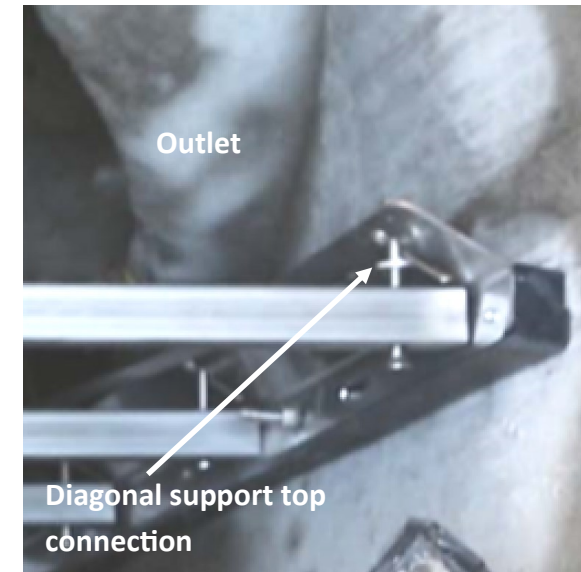
9) Install one anchor bolt per pair of slots. See additional anchor bolt instructions in hardware bag. Repeat Steps 7 through 9 to attach other wall bracket.



10) Working from the bottom up and leaving nuts and bolts loose, attach arches to wall brackets. Go to next step prior to attaching top arch.



11) While installing top arch, attach diagonal supports between arch and wall brackets.



12) Remove nut from lower arch adjusting bolts (each side). Attach bottom of diagonal support at this location, on each side.



13) Attach vertical supports. Tighten all nuts and bolts on skimmer structure, working from center of skimmer towards the walls.



14) Attach both side sheets at wall using (2) fastening strips and provided screws. Use hand clamps for assistance. Apply pressure and adjust your drill's torque setting to prevent stripping.



15) Clamp center sheet to center of skimmer structure, overlapping side sheets as shown above. Attach center sheet to vertical supports using (2) remaining fastening strips and provided screws.



Pat. US 9,752,600 B2

Pat. CA 2,893,173

Questions? Call 877-773-0073

Installer is responsible for meeting all safety and confined space entry requirements.

**PROUDLY
MADE IN THE
USA**

QUALITY MATERIALS:

- 100% recycled HDPE
- Stainless steel brackets
- Stainless steel hardware



Bowman
Construction
Supply Inc.



Quick
Supply Co.



Cascade
GEOSYNTHETICS

LOCATIONS & CONTACT INFO

ASP ENTERPRISES

aspent.com
salesasp@aspent.com

BOWMAN CONSTRUCTION SUPPLY

bowmanconstructionsupply.com
salesbcs@bowmanconstructionsupply.com

QUICK SUPPLY CO.

quicksupplyco.com
salesquick@quicksupplyco.com

CASCADE GEOSYNTHETICS

cascadegeos.com
salescascade@cascadegeos.com

St. Louis, MO 636.343.4357
Omaha, NE 402.861.8579
Kansas City, MO 816.554.1191
Wichita, KS 316.393.1554

Denver, CO 303.696.8960
Colorado Springs, CO 719.257.7840
Loveland, CO 970.535.0863

Des Moines, IA
515.289.1271

Portland, OR
971.339.1020

SOLUTIONS WE SUPPLY

GEOSYNTHETICS

Filter Fabrics

Stabilization Fabrics

Geogrids

- Road Grids
- Wall Grids
- Slope Stabilization

Specialty Fabrics

Composite Geomembranes

- GCLs, PVC, HDPE, LLDPE, EPDM, Granular Bentonite

SEDIMENT CONTROL

Inlet Protection

- Grated Inlet, Curb Inlet, Area Inlet Protection

Ditch Checks

- Triangle Silt Dike
- GeoRidge

Perimeter Protection

- High and Low-Porosity Silt Fence, Straw Wattles, Silt Socks
- Safety Fence

Flocculants & Water Treatment

- Polymer-Based & Natural Flocculants

Sediment Basin Skimmers

Dewatering Bags

Trackout Control

- FODS
- Rumble Grates

Turbidity Curtains

EROSION CONTROL

Basic Hydraulically Applied Mulches

- Wood
- Paper
- Blends
- Straw

High-Performance Hydraulically

Applied Products

- BFM
- FGM
- Additives & Tackifiers

Temporary Erosion Control Blankets

- Coir & Jute Mat/Nettings
- Short-Term ECBs
- Extended-Term ECBs

Permanent Erosion Control Blankets

- Turf Reinforcement Mats
- HP-TRMs
- Anchor Reinforced Vegetation System

Structural BMPs

- Transition Mats
- Geoweb Cellular Confinement
- Composite Vegetated Armor System
- Flex MSE Vegetated Wall System
- Articulated Concrete Block
- Gabions
- Grout-Filled Geotextile Mats

Vegetation Establishment

- Native Seed & Turf Seed
- Fertilizers
- Organic Soil Additives
- Stratavault Soil Cells

STORMWATER MANAGEMENT

Water Quality

- Inlet Filter Boxes
- Pre-Treatment Chamber
- Nutrient Separating Baffle Boxes
- High-Flow Biofiltration Media
- Hydrodynamic Separators
- Stratavault

Water Quantity

- Modular Underground Storage Systems
- Chamber Detention Systems

Drainage

- HDPE Swale Liner
- Pipe & Fittings
- Drainage Composites
- Strip Drain

Inlet Structures

- PVC
- Drain Basins, In-Line Drains
- Landscape

Permeable Pavers

- Permeable Articulating Concrete Block
- Grass Pavers
- Gravel Pavers
- Concrete Pavers

SPECIALTY

Natural & Synthetic Coir Fiber Logs

Vegetated Reinforced Soil Slopes

Soil Anchors

Root Barrier System

AquaBlok

Muscle Wall

We are full line distributors of construction materials for all project types. Contact us for assistance with a project. From specification and development to installation and completion, we're here to help with all of your site solution needs.

GEOSYNTHETICS | EROSION CONTROL | STORMWATER MANAGEMENT
SEDIMENT CONTROL | REVEGETATION & SOIL AMENDMENTS