

Gravity wall system using PROPEX Scourlok Engineered Bank Stabilization System

Gravity retaining walls rely on the weight of the wall system itself to counteract the lateral earth pressures due to the retained soil. The most common gravity walls currently in use are comprised either of rock-filled gabions or of large concrete blocks, each weighing 1,800 lbs. or more (815 kg), that interlock together in a dry-stack fashion to construct retaining walls typically up to 12 ft high (3.6 m). To reach such heights without additional artificial reinforcement, the offset distance for each layer may be increased and/ or a wider (thicker) base section can be used on the bottom course to increase resistance to base sliding and to overturning moments.

Introduction

In recent years, as site conditions allow, project designers have sought vegetated facing on these structures rather than traditional hardscape systems (i.e., concrete blocks or rock filled wire-frame units). In response, the **PROPEX® Scourlok®** technology was developed to provide a vegetated facing option using **PROPEX Pyramat® 75** high-performance turf reinforcement mat (HPTRM), in conjunction with soil-filled, modular wire bastions.

Although the main potential application for this gravity wall system is along stream channels and lake shorelines, it also can be used as a gravity retaining wall in non-water applications.

Components and capabilities

When a slope fails it tends to do so by one of two modes, translational or rotational failure. Translational failure is described as a sliding mass of soil along a plane of failure parallel to the surface of the slope. Typically, this is when the length of the failure is greater than 10 times the depth of failure. Rotational failure is described as a deep-seated sloughing of a larger mass of soil along a plane of failure of a circular shape. The incorporation of Engineered Earth Anchors can assist in remediating either type of failure by passively increasing the shear resistance of the soil (Figure 2).

Slope stability analysis

PROPEX Scourlok is constructed of **PROPEX Pyramat 75** High Performance Turf Reinforcement Mat (HPTRM) and interlocking, galvanized carbon steel baskets lined with **MIRAFI** nonwoven geotextile. The vegetative pockets and

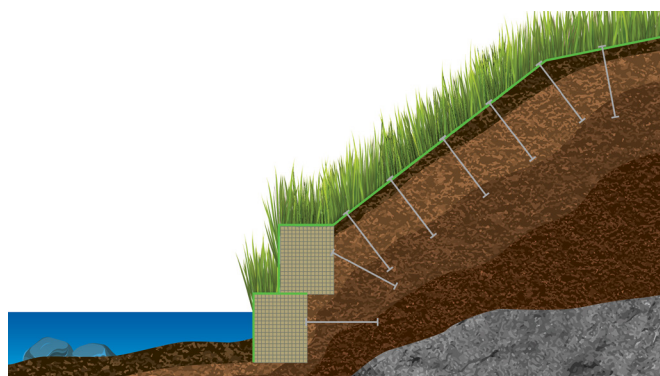


Figure 1: Schematic of PROPEX Scourlok gravity-wall system

tops of the system are designed to be filled with organic growth media for vegetation. One **PROPEX Scourlok** unit consists of five cells, each being 3 ft (l) x 3 ft (w) x 4 ft (h) (0.9 m x 0.9 m x 1.2 m), creating a 15 ft (4.5 m) long unit in total. The ends of the 4 ft (h) x 3 ft (w) (0.9 m x 1.2 m) units can be connected, forming a continuous structure, and stacked with an offset for various configurations. Each cell is open at the bottom and top, which allows ready setup and filling at the project site with on-site soil or granular fill. When several of these units are linked together in series, they form a gravity wall system (Figure 1).

The units can be shipped flat, then expanded out into the segmented units that can be stood up on a flat, prepared surface, then filled from the top with soil or gravel. The **PROPEX Pyramat 75** HPTRM wrap contains the soil and allows for seeds placed within the infill to sprout and grow through the HPTRM. It also provides sufficient tensile strength and UV resistance for excellent long-term

performance of **PROPEX** Scourlok walls. The units can be stacked on top of each other, using a setback distance of 0.5 to 1.5 ft (0.15 m – 0.45m), thus forming walls up to 12 ft (3.7 m) high (Figure 2). Higher wall configurations may be constructed using a wider base, as long as the project specific design can provide an adequate factor of safety (FS).

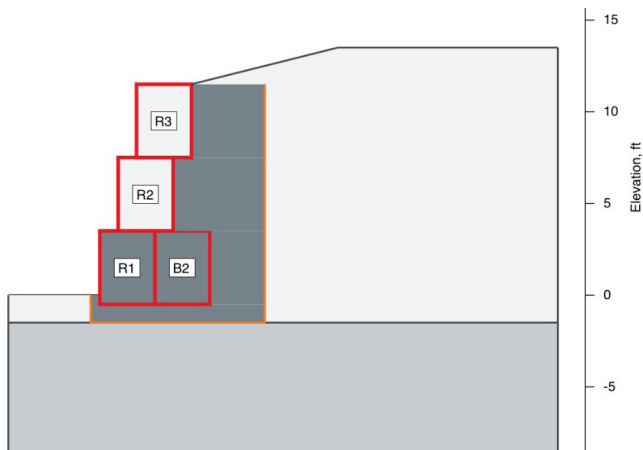


Figure 2: Typical configuration of stacked PROPEX Scourlok gravity-wall system

PROPEX Scourlok walls must be founded directly on native soil or approved structural fill. In most cases, subgrade preparation involves using an excavator with smooth-blade bucket to remove topsoil and organic detritus to reach native, undisturbed soil and provide a smooth shallow trench to place the initial bastion row. If the foundation soil comprises clay or elastic silt, which are moisture-sensitive soils, then a compacted gravel leveling pad should be placed, along with a drainage system to remove excess groundwater at the base of the wall. If a foundation drain pipe is used, then it must have a proper outlet for water disposal or conveyance to low points. For sites prone to water submergence, the lower sections of **PROPEX** Scourlok can be filled with coarse gravel to allow free movement of water without pore-pressure build-up (Figure 3).



Figure 3: Coarse gravel infill used in base row of PROPEX Scourlok

It is recommended that soil infill for **PROPEX** Scourlok meet the following specifications:

- Classified as GM, GW-GM, SM, SW-SM, SC- SM, CL-ML, or ML referencing the Unified Soil Classification System (USCS).
- Contains maximum particle size of 3 in (7.6 cm).
- Has a Plasticity Index (PI) of fines not exceeding 10, Liquid Limit not exceeding 30.
- Has natural or conditioned moisture content to allow proper compaction.
- Contains no deleterious substances (wood, metal, plastic, waste, etc.), hazardous chemicals, or pesticide/herbicide residue.

Because the **PROPEX** Scourlok system is flexible, minor curves up to a 30 ft (9.1 m) radius can be incorporated along the wall or slope alignment. This is achieved for each successive lift by flexing the units prior to backfilling. If sharper turns are needed, modifications can be made to the front or back panels of the individual cells in the field.

Soil compaction control during construction is critical to the long-term performance of these gravity structures.

PROPEX Scourlok infill should be compacted with a moderate effort, allowing some packing of the soil without causing excessive swelling of the cell walls. Compaction is required in the backfill zone behind the filled units. For small compaction equipment, such as vibratory plate compactors, the thickness of soil compaction lifts often is limited at 6–8 in (15.2–20.3 cm) in order to achieve the specified density (per ASTM D1557) Effective compaction monitoring and verification help reduce the potential for differential settlement, which may adversely affect long-term performance.

Geotechnical design concepts

The weight of the must resist the lateral earth pressure due to the retained soil tending to deform and slide downward and outward due to the pull of gravity, as well as any lateral contribution from surcharge loading in the backslope area (such as permanent loads due to a building or bridge foundation or temporary loads due to traffic or construction equipment). The lateral earth-pressure force, F_o , (measured in force per unit length of wall face; i.e., lb/ft or kN/m) is estimated using the Coulomb active earth pressure coefficient K_a given by (NCMA, 1996):

Where:

$$K_a = \frac{\cos^2(\phi + \beta)}{\cos^2\beta(\phi_w - \beta) \left[1 + \frac{\sin(\phi + \phi_w) \sin(\phi - u)}{\cos^2\beta(\phi_w - \beta) \cos(\beta + u)} \right]^2}$$

- β = batter angle of wall
(inclination of wall face from vertical)
- ϕ_w = friction angle at wall-soil interface (typically 0.67ϕ)
- ϕ = friction angle of retained soil
- u = backslope angle

Referring to the diagram shown in Figure 4,
the lateral earth-pressure force is: $F_a = 0.5\gamma H^2 K_a$

Where,

γ = unit weight (density) of retained soil

H = height of wall system

Lateral force due to any surcharge loading applied
in the backslope area is:

$$F_q = qHK_a$$

Where,

H = height of wall system

q = surcharge loading, expressed as a pressure in units
of pounds per square foot (psf) or kilonewtons per
square meter (kN/m²).

These forces tend to overturn (rotate by tipping) the
gravity-wall system or cause it to slide horizontally outward
along its base; thus, they must be sufficiently resisted by
the weight of the wall units to provide long-term stability.
In addition, a bearing capacity analysis (foundation) and
a global stability analysis (overall stability of wall and
backslope area using a method-of-slices approach) can
be conducted to evaluate these potential modes of failure
external to the wall system itself. Optional ground anchors
can be installed to form a “tie-back” system if local site
conditions warrant. If a taller vegetated wall or slope is
needed, then the **PROPEX** Pyrawall® system may be
considered for the site (Miller, 2017).

Oftentimes, a coarse granular (crushed gravel) backfill zone
is included directly behind the **PROPEX** Scourlok units to
allow free drainage of groundwater and to increase the
friction angle along the potential failure path through the
retained soil. Using a weighted value of the friction angle
along this path (a path intersecting some gravel and some
retained soil) results in a lower computed value of K_a , and
thus, increasing stability of the wall system.

Geotechnical design criteria (i.e., factor of safety against
failure) for the analyzed potential failure modes typically
are prescribed as:

Mode	Minimum FS (static)	Minimum FS (seismic)
Base sliding	1.5	1.1
Overturning	2.0	1.5
Bearing capacity	2.0	1.5
Global stability	1.3 to 1.5	1.1 to 1.3

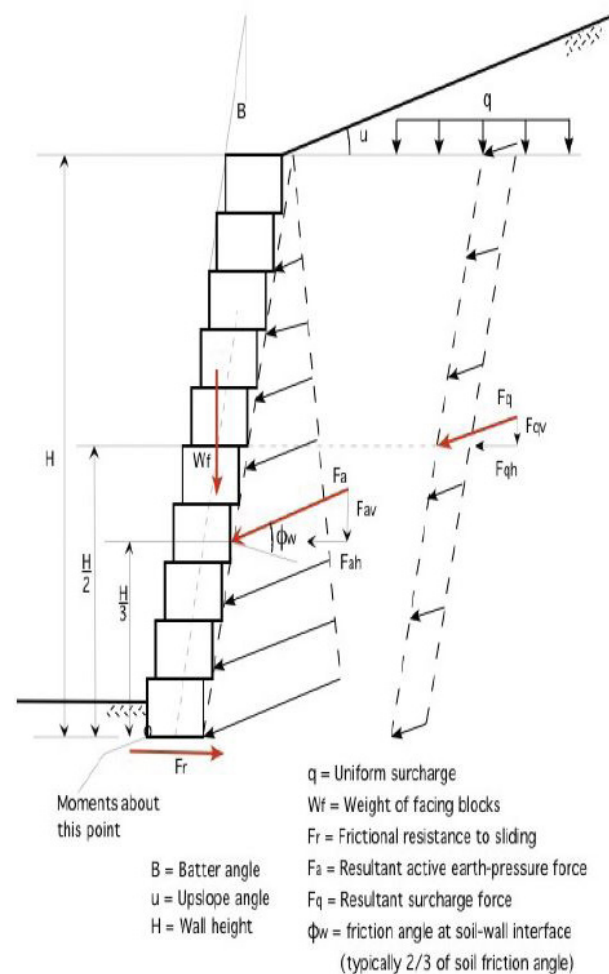


Figure 4: Lateral earth pressure and surcharge forces acting on a modular block wall (adapted from NCMA, 1996)

not be considered. Instead, vegetation approaches such as broadcast or hydraulically applied seed under the HPTRM or secured sod above the HPTRM should be considered. If the armoring solution is to be installed where vegetation establishment is not feasible, it is recommended that a lightweight nonwoven geotextile with substantial UV resistance be installed below the HPTRM to mitigate the movement of fine soil particles through the armoring solution while still providing a porous medium to facilitate proper drainage.

Summary

By combining the **PROPEX** Pyramat 75 technology with interlocking galvanized coated carbon steel baskets and a **MIRAFI** nonwoven geotextile, an easily constructible gravity-wall system is now available for streambank, shoreline, and slope stabilization. Potential projects range from landscaping enhancements for residential and commercial properties to large-scale shoreline protection, as well as landslide repairs requiring a toe buttress.

For remote project areas or those heavily wooded or steep sites with difficult equipment access, the ability to easily transport or carry geosynthetic materials to the site is an advantage over heavier concrete blocks or metal panels. Remote sites along lakeshores, rivers, estuaries, or coastlines could be accessed by boat, readily transporting materials and workers to the projects. Once the leveling pad or foundation is prepared, **PROPEX** Scourlok units can be rapidly deployed and set up, ready for soil infilling.

Note that site investigation and characterization of geotechnical soil properties are always required to provide reasonable confidence in the wall/slope design. Construction oversight and monitoring is strongly recommended to confirm the site conditions concur with those assumed in the design analysis and to verify that construction practices follow the engineering design and specifications.

References:

1. Miller, S.M. (2017). Versatile applications of internally braced, geosynthetic wrap-face vegetated walls and reinforced soil slopes. *Geosynthetics* 35(4): 24-33.
2. NCMA (National Concrete Masonry Association), Design Manual for Segmental Retaining Walls, 2nd Ed.; Herndon, VA, 1996.



Bowman
Construction
Supply Inc.



Quick
Supply Co.



Cascade
GEOSYNTHETICS

LOCATIONS & CONTACT INFO

ASP ENTERPRISES

aspent.com
salesasp@aspent.com

BOWMAN CONSTRUCTION SUPPLY

bowmanconstructionsupply.com
salesbcs@bowmanconstructionsupply.com

QUICK SUPPLY CO.

quicksupplyco.com
salesquick@quicksupplyco.com

CASCADE GEOSYNTHETICS

cascadegeos.com
salescascade@cascadegeos.com

St. Louis, MO 636.343.4357
Omaha, NE 402.861.8579
Kansas City, MO 816.554.1191
Wichita, KS 316.393.1554

Denver, CO 303.696.8960
Colorado Springs, CO 719.257.7840
Loveland, CO 970.535.0863

Des Moines, IA
515.289.1271

Portland, OR
971.339.1020

SOLUTIONS WE SUPPLY

GEOSYNTHETICS

Filter Fabrics

Stabilization Fabrics

Geogrids

- Road Grids
- Wall Grids
- Slope Stabilization

Specialty Fabrics

Composite Geomembranes

- GCLs, PVC, HDPE, LLDPE, EPDM, Granular Bentonite

SEDIMENT CONTROL

Inlet Protection

- Grated Inlet, Curb Inlet, Area Inlet Protection

Ditch Checks

- Triangle Silt Dike
- GeoRidge

Perimeter Protection

- High and Low-Porosity Silt Fence, Straw Wattles, Silt Socks
- Safety Fence

Flocculants & Water Treatment

- Polymer-Based & Natural Flocculants

Sediment Basin Skimmers

Dewatering Bags

Trackout Control

- FODS
- Rumble Grates

Turbidity Curtains

EROSION CONTROL

Basic Hydraulically Applied Mulches

- Wood
- Paper
- Blends
- Straw

High-Performance Hydraulically

Applied Products

- BFM
- FGM
- Additives & Tackifiers

Temporary Erosion Control Blankets

- Coir & Jute Mat/Nettings
- Short-Term ECBs
- Extended-Term ECBs

Permanent Erosion Control Blankets

- Turf Reinforcement Mats
- HP-TRMs
- Anchor Reinforced Vegetation System

Structural BMPs

- Transition Mats
- Geoweb Cellular Confinement
- Composite Vegetated Armor System
- Flex MSE Vegetated Wall System
- Articulated Concrete Block
- Gabions
- Grout-Filled Geotextile Mats

Vegetation Establishment

- Native Seed & Turf Seed
- Fertilizers
- Organic Soil Additives
- Stratavault Soil Cells

STORMWATER MANAGEMENT

Water Quality

- Inlet Filter Boxes
- Pre-Treatment Chamber
- Nutrient Separating Baffle Boxes
- High-Flow Biofiltration Media
- Hydrodynamic Separators
- Stratavault

Water Quantity

- Modular Underground Storage Systems
- Chamber Detention Systems

Drainage

- HDPE Swale Liner
- Pipe & Fittings
- Drainage Composites
- Strip Drain

Inlet Structures

- PVC
- Drain Basins, In-Line Drains
- Landscape

Permeable Pavers

- Permeable Articulating Concrete Block
- Grass Pavers
- Gravel Pavers
- Concrete Pavers

SPECIALTY

Natural & Synthetic Coir Fiber Logs

Vegetated Reinforced Soil Slopes

Soil Anchors

Root Barrier System

AquaBlok

Muscle Wall

We are full line distributors of construction materials for all project types. Contact us for assistance with a project. From specification and development to installation and completion, we're here to help with all of your site solution needs.

GEOSYNTHETICS | EROSION CONTROL | STORMWATER MANAGEMENT
SEDIMENT CONTROL | REVEGETATION & SOIL AMENDMENTS