



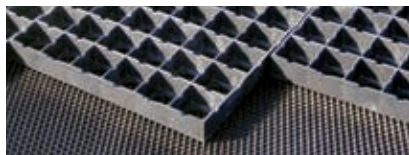
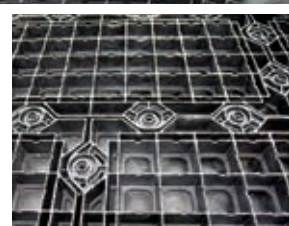
**PRESTO** | **GEOSYSTEMS®**

**STRENGTH. FROM THE GROUND UP.**

Since 1979

# **GEOTERRA®** **construction mats**

Fast In. Fast Out. Fast to Mobilize.



Safest Construction Mats in the Industry.





# GEOTERRA® Mats

Leading the Construction Industry in Safety and Value.



**GEOTERRA Mats are built tough.**


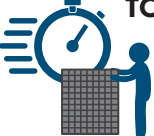


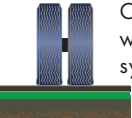

GEOTERRA heavy-duty HDPE construction mats support thousands of times their own weight—yet they are light enough to install without heavy equipment. Equivalent to 12 inches of aggregate—without the hassle of cleanup.

**The safest, most economical site access.**

Quick and easy handling, deployment without the need for heavy placement equipment is safer for workers—less injuries and less downtime. GEOTERRA mats are easy to remove and can be reused—offering a low life-cycle cost—and at a fraction of the cost of heavier composite HDPE and timber mats.

## The Best Value in Construction Mats

**Why rent when you can own?** There simply is no other construction mat on the market that offers high performance at such low cost and with easy, versatile installation.

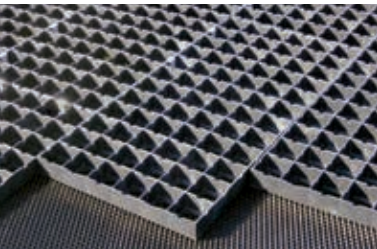
 <p><b>LOW COST TO OWN</b></p> <p>Up to 70% lower cost than heavier HDPE composite or timber mat systems.</p>	 <p><b>FAST &amp; EASY TO MOBILIZE</b></p> <p>Fast deployment. Fast installation. No heavy lifting equipment required.</p>	 <p><b>STRONG &amp; DURABLE</b></p> <p>Built strong, yet lightweight. Weather-resistant high-density polyethylene material will not degrade or rot.</p>
 <p><b>EASY ON THE ENVIRONMENT</b></p> <p>Porous mats allow water infiltration and are reusable. Low carbon footprint compared to timber mats.</p>	 <p><b>VERSATILE USE &amp; REUSE</b></p> <p>Over soil, turf or integrated with geosynthetic drainage system for long-term use. Remove &amp; reuse.</p>	 <p><b>LAYOUT VERSATILITY</b></p> <p>Mats are “locked” together as one contiguous system with bolts or PADLOCS® to fit any site layout.</p>

## Two Mat Styles

Preserve a site’s integrity for short or long-term work—at ballfields, stadiums, schools, commercial buildings, homes and construction sites.

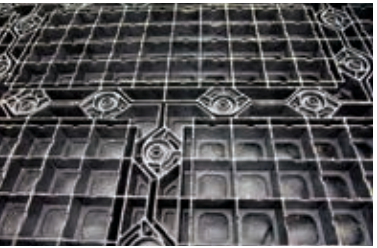
**GEOTERRA® (PADLOC® Connection)**

The most economical mat in the industry. Strong PADLOC connectors lock mat units together—forming an integrated mat sized to fit any site configuration.





**GEOTERRA GTO (Bolt Connection)**

The fastest mat to install. Large HDPE bolts connect “over/under” tabs securing the units. Like GEOTERRA mats, GEOTERRA GTO mats are locked together to fit any site configuration.



## Typical Uses

- Temporary or long-term use
- Access roads over soft ground/remote locations
- Oil-drilling platforms
- Construction site access
- Landscape, cemetery & utility access over lawns
- Equipment/vehicle storage
- Emergency site access
- Helipads

CONSTRUCTION MAT COMPARISON CHART				
DELIVERY/ PLACEMENT	TRANSPORTABILITY	HEAVY EQUIPMENT REQUIRED	INSTALLATION SAFETY	EASE OF HANDLING
GEOTERRA GTO	Very Easy	No	Safe	Very Easy
GEOTERRA PADLOC	Very Easy	No	Safe	Very Easy
Composite HDPE Mats	Moderate	Yes	Some Caution	Moderate
Steel and Fiberglass Mats	Very Difficult	Yes	Use Caution	Very Difficult
Timber Mats	Very Difficult	Yes	Use Caution	Very Difficult
PERFORMANCE	STRENGTH	SOFT SOIL BRIDGING	POROUS/RELIEVES PORE PRESSURE	WEATHER RESISTANCE
GEOTERRA GTO	High	High	Yes	High
GEOTERRA PADLOC	High	High	Yes	High
Composite HDPE Mats	Very High	Very High	No	High
Steel and Fiberglass Mats	Very High	Very High	No	High
Timber Mats	Very High	Very High	Slightly	Moderate/Low (if wet conditions)
INSTALLATION	LAYDOWN VERSATILITY	SPEED	EASE OF ASSEMBLY/ DISASSEMBLY	
GEOTERRA GTO	Very Versatile	Quick	Very Easy	
GEOTERRA PADLOC	Very Versatile	Moderate	Easy	
Composite HDPE Mats	Versatile	Moderate	Moderate/Heavy Equip.	
Steel and Fiberglass Mats	Not Versatile	Slow	Difficult/Heavy Equip.	
Timber Mats	Not Versatile	Slow	Difficult/Heavy Equip.	
VALUE/COST	INITIAL PURCHASE PRICE	REUSABILITY		
GEOTERRA GTO	Low	Very High		
GEOTERRA PADLOC	Very Low	Very High		
Composite HDPE Mats	High	Very High		
Steel and Fiberglass Mats	Very High	Very High		
Timber Mats	Very High	High/Moderate (if wet conditions)		



# APPLICATIONS

## Turf Protection & Site Access

### TURF PROTECTION

Protect lawn for temporary access. GEOTERRA® mats placed over grass protect turf from concentrated rutting and turf damage caused by vehicle and equipment traffic. Open design allows sunlight/moisture to reach protected turf.

Perfect for landscape and utility work, and maintenance access.



### SITE ACCESS ROADS & PADS

Quickly build access roads and working platforms over soft ground for construction or maintenance vehicles and equipment.

High flexural strength GEOTERRA mats perform well over soft soils—even with heavily loaded trucks or equipment.



# APPLICATIONS

## Low Environmental Impact

### PERMANENT ACCESS INTO ENVIRONMENTAL & PROTECTED AREAS

Environmentally-sensitive areas can be accessed with minimal disturbance.

GEOTERRA® mats can also allow natural grass growth through the open-celled structure.



### “FLOATING” ATV TRAILS

Create low-impact, floating roads without fill for light- to medium-weight traffic. Ideal in areas with limited or costly aggregate resources.

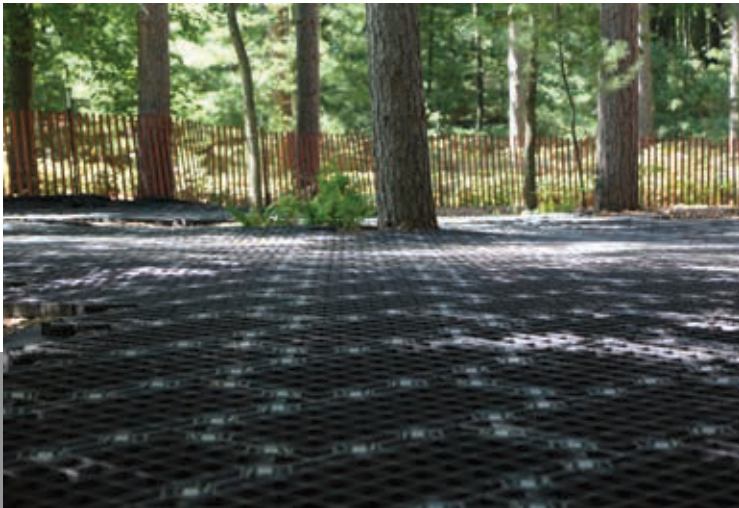


### CROSS OVER WET, SOFT GROUND

Cross extremely wet ground in undeveloped or wetlands areas with maintenance vehicles and equipment.

### TREE ROOT PROTECTION

Support vehicle loading and protect the critical tree root zone from damage caused by construction vehicle loading.



### BRIDGE HARD SURFACE “JUMPS”

Protect hard pavements when crossing over jumps between paved and unpaved areas.



# APPLICATIONS

## ACCESS OVER SAND OR NON-SUPPORTIVE SOIL

Bridge over sand and other soft soils for safe, heavy access.



## WALKWAYS, HELIPADS, WORKING PADS

Create portable walkways and helipads in remote areas for temporary construction.

Build short- or long-term work pads and staging areas where aggregate resources are limited or costly—such as in oil & gas or wind operations.



## TRACKING PADS

Reduce mud tracking from job sites. Bridge over grass or muddy areas to keep construction and maintenance vehicles from getting stuck.



# INSTALLATION

Fast. Easy. Safe. No Heavy Equipment Required.

Installing GEOTERRA® Mats is fast and easy. Mats can be connected and configured to any size to meet unique site requirements.



## PRODUCT DELIVERY

GEOTERRA mat sections are delivered on cubed pallets. Lightweight GEOTERRA sections are easy for crews to unload and place by hand

- GEOTERRA weighs only 2 lbs/sf
- GEOTERRA GTO weighs only 3 lbs/sf

## ASSEMBLY & INSTALLATION

### GEOTERRA Mats

GEOTERRA mat sections are locked together with PADLOC® connectors. Large mats can be preassembled off-site for easy on-site installation. They are easy to handle by construction crews without specialized equipment.



PADLOC Connector



### GEOTERRA GTO Mats

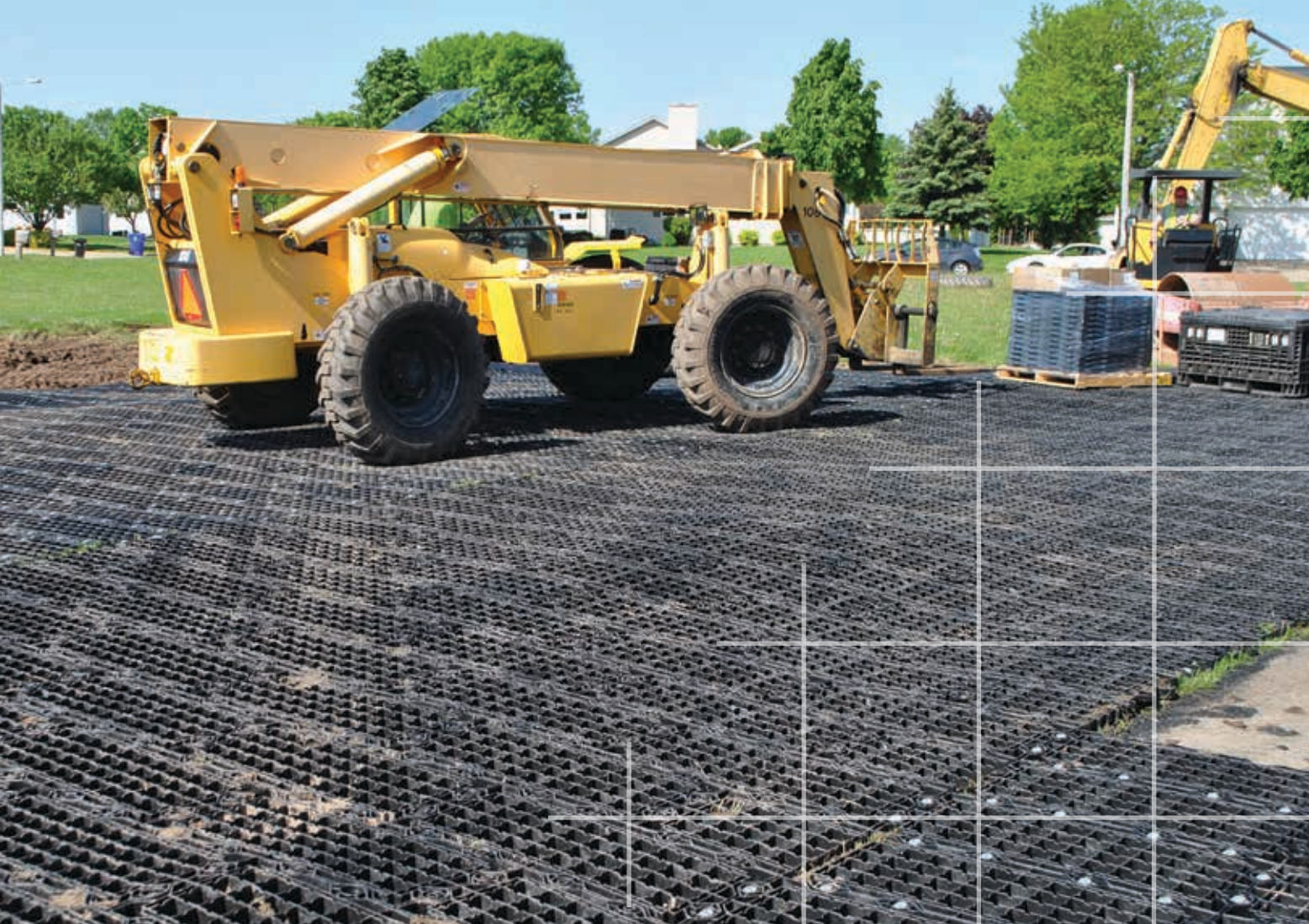
Large overlapping tabs and large bolts make connecting GEOTERRA GTO mats fast and easy.



GTO: Yellow bolts are available for edge and center-line delineation.







**PRESTO | GEOSYSTEMS®**

**STRENGTH. FROM THE GROUND UP.**

Since 1979

**670 N Perkins Street • Appleton, Wisconsin, USA**  
**800-548-3424 or +1 920-738-1328**  
**Email: [info@prestogeo.com](mailto:info@prestogeo.com) • [www.prestogeo.com](http://www.prestogeo.com)**

**FIND US | FOLLOW US**

We are a global business with accessibility  
through a worldwide distribution network.



© 2019 PRESTO GEOSYSTEMS®  
GEOSYSTEMS®, GEOWEB®, GEOBLOCK®, GEOPAVE®, GEOTERRA®, GEORUNNER®,  
PADLOC® and ATRA® are registered trademarks of Reynolds Presto Products, Inc.

DISTRIBUTED BY:

*This information has been prepared for the benefit of customers interested in Presto GEOSYSTEMS® products. It was reviewed carefully prior to publication. Presto assumes no liability for its accuracy or completeness. Final determination of the suitability of any information or material for the use contemplated, or for its manner of use, is the sole responsibility of the user.*



**Bowman**  
Construction  
Supply Inc.



**Quick**  
Supply Co.



**Cascade**  
GEOSYNTHETICS

## LOCATIONS & CONTACT INFO

### ASP ENTERPRISES

aspent.com  
salesasp@aspent.com

### BOWMAN CONSTRUCTION SUPPLY

bowmanconstructionsupply.com  
salesbcs@bowmanconstructionsupply.com

### QUICK SUPPLY CO.

quicksupplyco.com  
salesquick@quicksupplyco.com

### CASCADE GEOSYNTHETICS

cascadegeos.com  
salescascade@cascadegeos.com

**St. Louis, MO** 636.343.4357  
**Omaha, NE** 402.861.8579  
**Kansas City, MO** 816.554.1191  
**Wichita, KS** 316.393.1554

**Denver, CO** 303.696.8960  
**Colorado Springs, CO** 719.257.7840  
**Loveland, CO** 970.535.0863

**Des Moines, IA**  
515.289.1271

**Portland, OR**  
971.339.1020

## SOLUTIONS WE SUPPLY

### GEOSYNTHETICS

Filter Fabrics

Stabilization Fabrics

Geogrids

- Road Grids
- Wall Grids
- Slope Stabilization

Specialty Fabrics

Composite Geomembranes

- GCLs, PVC, HDPE, LLDPE, EPDM, Granular Bentonite

### SEDIMENT CONTROL

Inlet Protection

- Grated Inlet, Curb Inlet, Area Inlet Protection

Ditch Checks

- Triangle Silt Dike
- GeoRidge

Perimeter Protection

- High and Low-Porosity Silt Fence, Straw Wattles, Silt Socks
- Safety Fence

Flocculants & Water Treatment

- Polymer-Based & Natural Flocculants

Sediment Basin Skimmers

Dewatering Bags

Trackout Control

- FODS
- Rumble Grates

Turbidity Curtains

### EROSION CONTROL

Basic Hydraulically Applied Mulches

- Wood
- Paper
- Blends
- Straw

High-Performance Hydraulically

Applied Products

- BFM
- FGM
- Additives & Tackifiers

Temporary Erosion Control Blankets

- Coir & Jute Mat/Nettings
- Short-Term ECBs
- Extended-Term ECBs

Permanent Erosion Control Blankets

- Turf Reinforcement Mats
- HP-TRMs
- Anchor Reinforced Vegetation System

Structural BMPs

- Transition Mats
- Geoweb Cellular Confinement
- Composite Vegetated Armor System
- Flex MSE Vegetated Wall System
- Articulated Concrete Block
- Gabions
- Grout-Filled Geotextile Mats

Vegetation Establishment

- Native Seed & Turf Seed
- Fertilizers
- Organic Soil Additives
- Stratavault Soil Cells

### STORMWATER MANAGEMENT

Water Quality

- Inlet Filter Boxes
- Pre-Treatment Chamber
- Nutrient Separating Baffle Boxes
- High-Flow Biofiltration Media
- Hydrodynamic Separators
- Stratavault

Water Quantity

- Modular Underground Storage Systems
- Chamber Detention Systems

Drainage

- HDPE Swale Liner
- Pipe & Fittings
- Drainage Composites
- Strip Drain

Inlet Structures

- PVC
- Drain Basins, In-Line Drains
- Landscape

Permeable Pavers

- Permeable Articulating Concrete Block
- Grass Pavers
- Gravel Pavers
- Concrete Pavers

### SPECIALTY

Natural & Synthetic Coir Fiber Logs

Vegetated Reinforced Soil Slopes

Soil Anchors

Root Barrier System

AquaBlok

Muscle Wall

We are full line distributors of construction materials for all project types. Contact us for assistance with a project. From specification and development to installation and completion, we're here to help with all of your site solution needs.

**GEOSYNTHETICS | EROSION CONTROL | STORMWATER MANAGEMENT**  
**SEDIMENT CONTROL | REVEGETATION & SOIL AMENDMENTS**