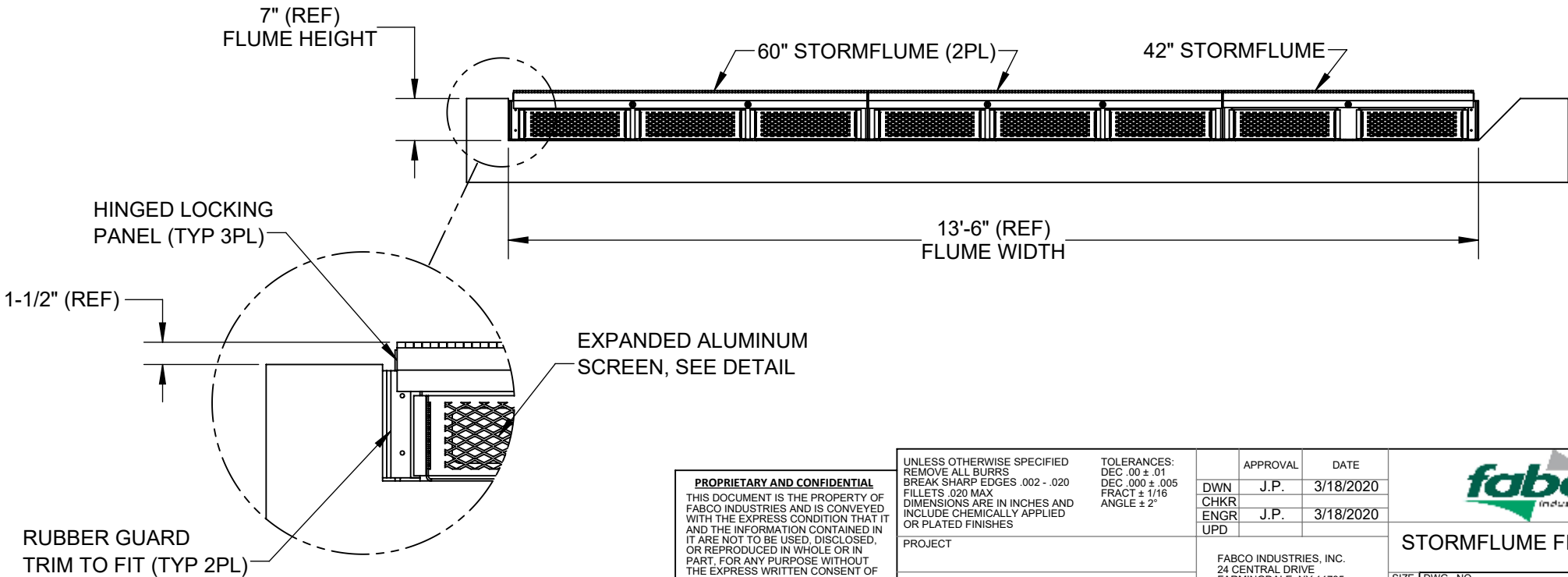
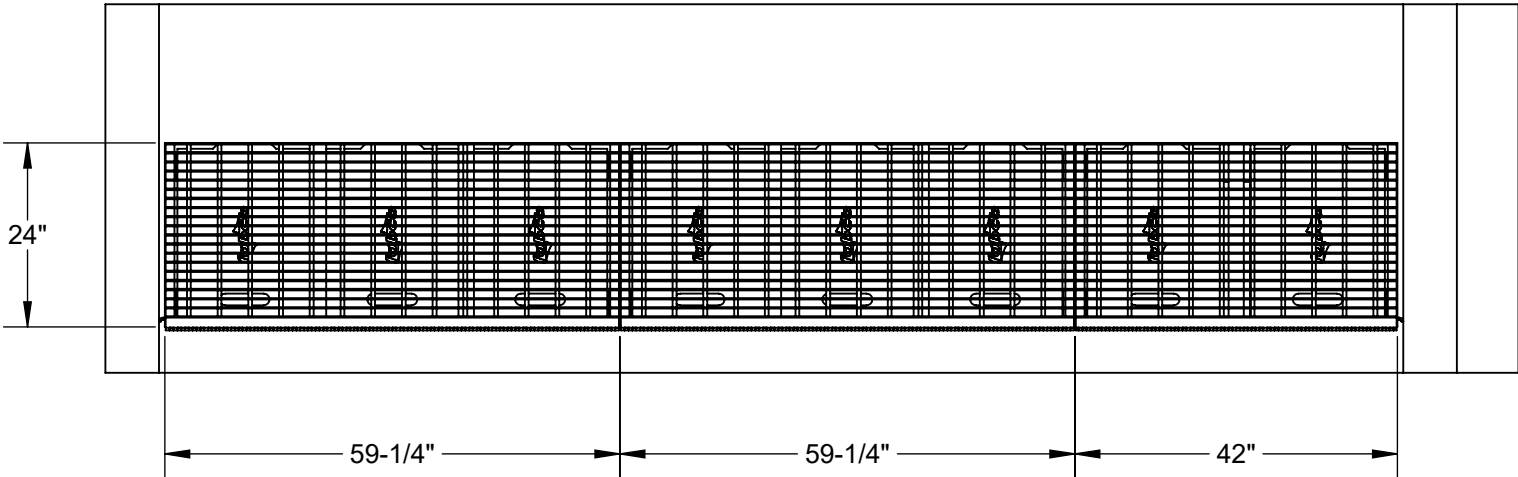


EXPANDED ALUMINUM DETAIL

NOTES:

1. SCREENBOX WEIGHT, EMPTY: 10 LBS MAX
2. MATERIALS:
 1. WELDED FRAME, ALUM. 5000 SERIES
 2. EXPANDED METAL: ALUM. 3000 SERIES
 3. HARDWARE: CRES 300 SERIES
3. PERFORMANCE CHARACTERISTICS PER BOX:
 1. DEBRIS CAPACITY: 1.0-CU.FT
 2. FILTERED FLOWRATE: 900-GPM (2.0-CFS)
 3. BYPASS UNRESTRICTED OVER TOP
4. TYPICAL INSTALLATION:

PLACE THE STORMFLUME FILTER ASSEMBLY TABLES IN THE FLUME BED AS SHOWN. LEVEL WITH SHIMS IF REQUIRED. CENTER AND SECURE THE TABLES IN PLACE USING THE CONCRETE ANCHORS AND HARDWARE PROVIDED. TRIM THE RUBBER GUARDS AS NECESSARY TO DIRECT THE INCOMING STORMWATER INTO THE SCREENBOX'S. REMOVE THE PENTA-HEAD BOLTS TO RAISE OR LOWER THE HINGED PANEL TO ACCESS THE SCREENBOX'S.



PROPRIETARY AND CONFIDENTIAL THIS DOCUMENT IS THE PROPERTY OF FABCO INDUSTRIES AND IS CONVEYED WITH THE EXPRESS CONDITION THAT IT AND THE INFORMATION CONTAINED IN IT ARE NOT TO BE USED, DISCLOSED, OR REPRODUCED IN WHOLE OR IN PART, FOR ANY PURPOSE WITHOUT THE EXPRESS WRITTEN CONSENT OF FABCO INDUSTRIES, AND THAT NO RIGHT IS GRANTED TO DISCLOSE OR SO USE ANY INFORMATION CONTAINED IN SAID DOCUMENT.		UNLESS OTHERWISE SPECIFIED REMOVE ALL BURRS BREAK SHARP EDGES .002 - .020 FILLETS .020 MAX DIMENSIONS ARE IN INCHES AND INCLUDE CHEMICALLY APPLIED OR PLATED FINISHES		TOLERANCES: DEC .00 ± .01 DEC .000 ± .005 FRACT ± 1/16 ANGLE ± 2°		APPROVAL		DATE			
		PROJECT		FABCO INDUSTRIES, INC. 24 CENTRAL DRIVE FARMINGDALE, NY 11735 WWW.FABCO-INDUSTRIES.COM		DWN	J.P.	3/18/2020			
		MATERIAL				CHKR	J.P.	3/18/2020			
						ENGR					
						UPD				STORMFLUME FILTER, 13'-6"	
								SIZE DWG. NO.		REV	
								B 10386-5-000		B	
								SCALE: NONE		SHEET 1 OF 1	