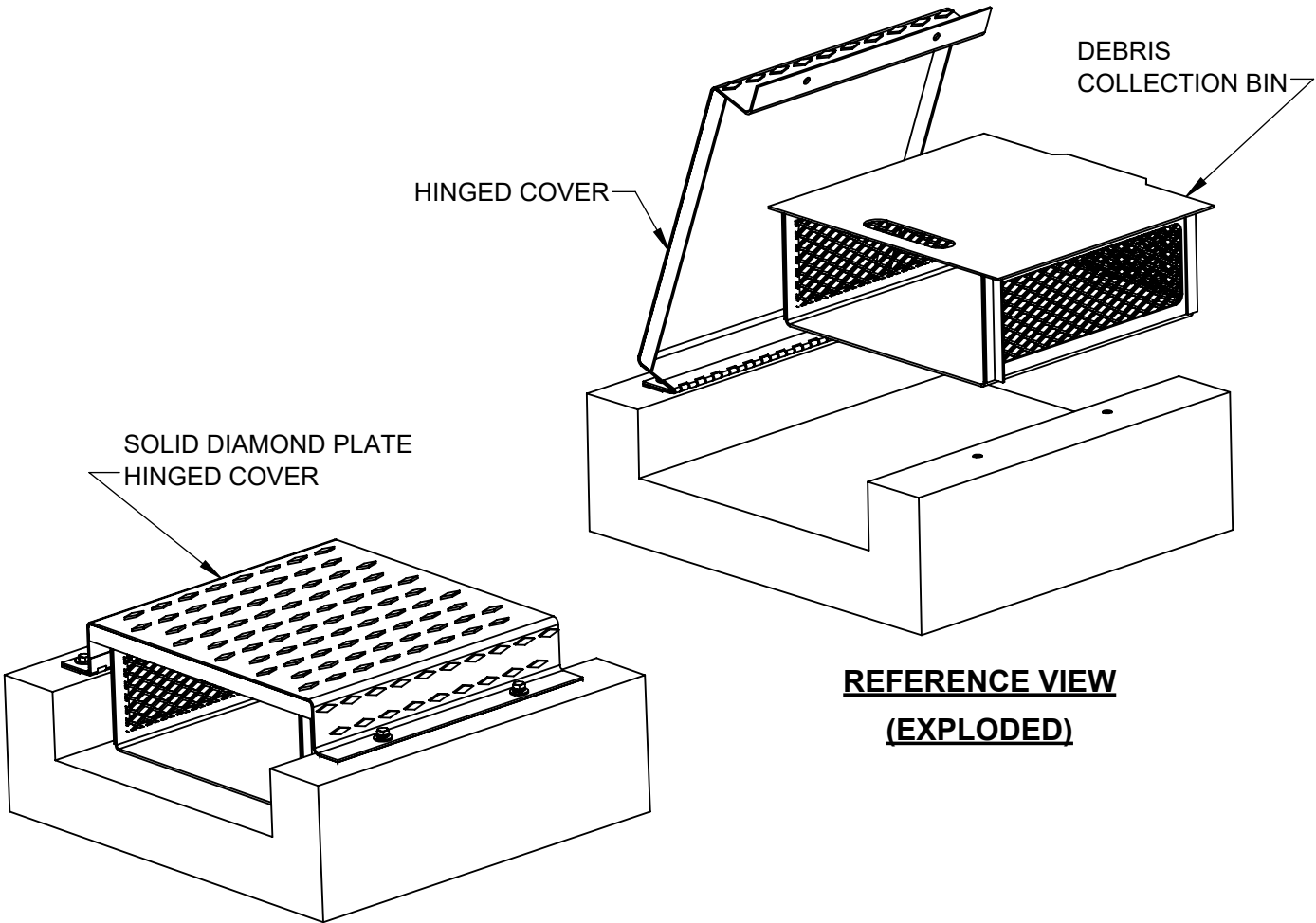


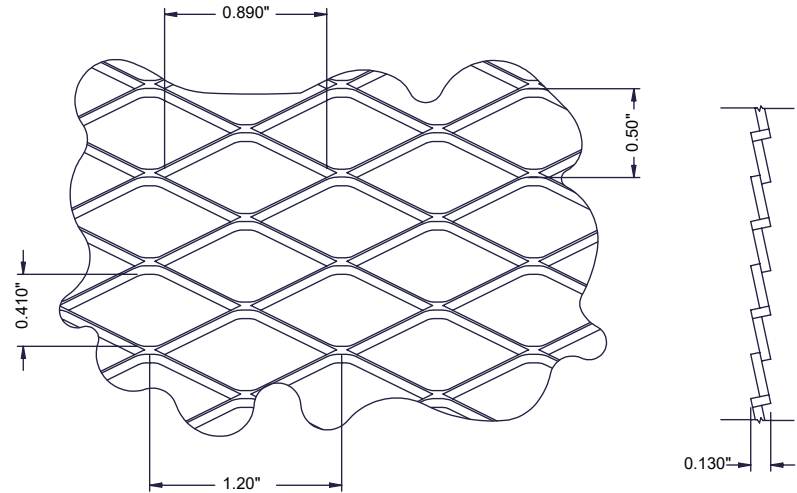
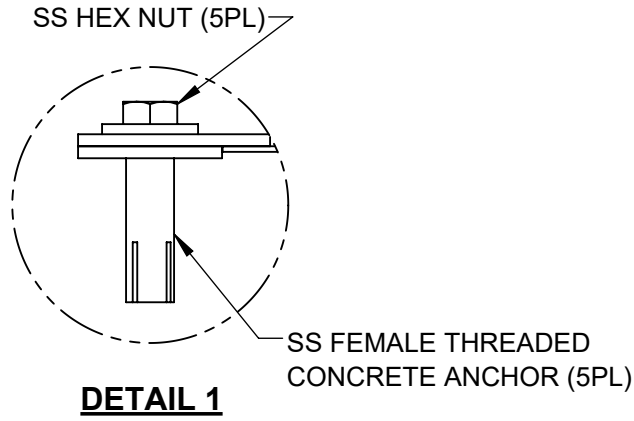
**NOTES:**

1. TOTAL WEIGHT, EMPTY: 20 LBS MAX
2. MATERIALS:
  1. HINGED COVER: DIAMOND TREAD, ALUM.
  2. EXPANDED METAL: ALUM. 3000 SERIES
  3. FRAME: ALUM. 5000 SERIES
  4. HARDWARE: CRES 300 SERIES
3. PERFORMANCE CHARACTERISTICS:
  1. DEBRIS CAPACITY: 0.9 CU. FT
  2. FILTERED FLOWRATE: 1080 GPM (2.4 CFS)
  3. BYPASS UNRESTRICTED OVER TOP
4. TYPICAL INSTALLATION:

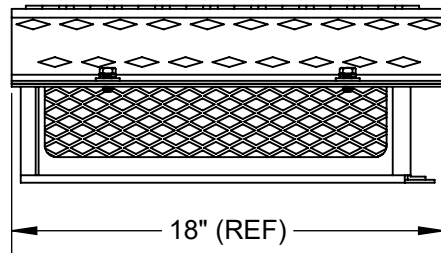
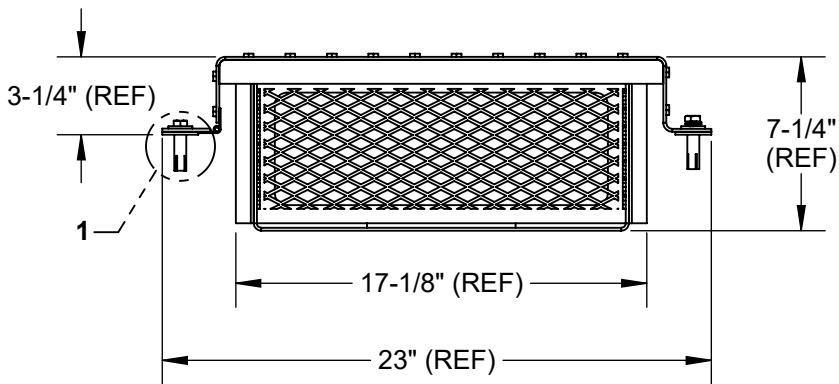
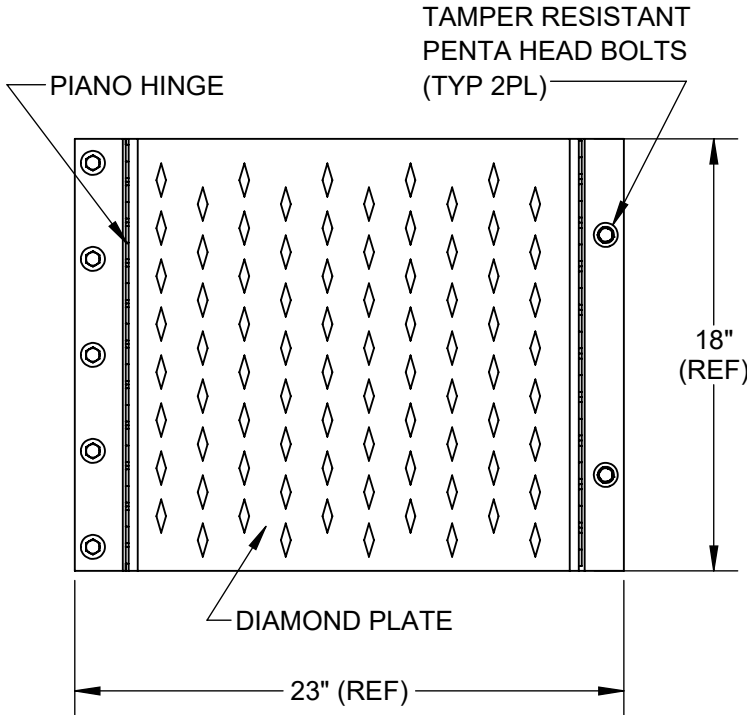
SECURE HINGED COVER TO FLUME USING PROVIDED HARDWARE. SWING CLOSED TO TRAP DEBRIS COLLECTION BIN IN PLACE. SWING OPEN AND REMOVE BIN TO CLEAN.




**REFERENCE VIEW**



**EXPANDED METAL DETAIL**



**REFERENCE VIEW  
(EXPLODED)**

<div>PROPRIETARY AND CONFIDENTIAL</div> <div>THIS DOCUMENT IS THE PROPERTY OF FABCO INDUSTRIES AND IS CONVEYED WITH THE EXPRESS CONDITION THAT IT AND THE INFORMATION CONTAINED IN IT ARE NOT TO BE USED, DISCLOSED, OR REPRODUCED IN WHOLE OR IN PART, FOR ANY PURPOSE WITHOUT THE EXPRESS WRITTEN CONSENT OF FABCO INDUSTRIES; AND THAT NO RIGHT IS GRANTED TO DISCLOSE OR SO USE ANY INFORMATION CONTAINED IN SAID DOCUMENT.</div>	<div>UNLESS OTHERWISE SPECIFIED REMOVE ALL BURRS BREAK SHARP EDGES .002 - .020 FILLET .020 MAX DIMENSIONS ARE IN INCHES AND INCLUDE CHEMICALLY APPLIED OR PLATED FINISHES</div>	<div>TOLERANCES: DEC .00 ± .01 DEC .000 ± .005 FRACT ± 1/16 ANGLE ± 2°</div>	APPROVAL		DATE	<div><div>HINGED FABCO FLUME FILTER 18"</div></div>
			DWN	R.W.	3/9/2020	
			CHKR			
			ENGR	J.P.	3/9/2020	
			UPD			
PROJECT			FABCO INDUSTRIES, INC. 24 CENTRAL DRIVE FARMINGDALE, NY 11735  WWW.FABCO-INDUSTRIES.COM			
MATERIAL	SEE NOTES		SIZE	DWG. NO.		REV
			B	10386-2-000		A
SCALE: NONE					SHEET 1 OF 1	