



PERMANENT EROSION CONTROL SOLUTIONS



**Flexamat® - Permanent Solution
for a Wide Range of Applications Including:**

AIRPORTS

DOT ROADSIDE

DRIVABLE SURFACES

ENERGY SECTOR

INLETS/OUTLETS

LANDFILL/MINE RECLAMATION

SHORELINE

STREAM AND RIVERBANK



PERMANENT EROSION CONTROL SOLUTIONS

Erosion Prevention and Protection

OUR COMPANY

Motz Enterprises, Inc. is the manufacturer of **Flexamat**®. The company has been in business for over 30 years and is headquartered in Cincinnati, Ohio.

Flexamat is sold throughout the United States and Canada with material available locally in most areas.

We take pride in our performance and specifying the right product for the right application.

Flexamat is an effective, long term solution. We look forward to working with you.



Flexamat®

Learn More About How Flexamat® Is The Best Permanent Erosion Solution!



About Flexamat®

Permanent Erosion Control

Flexamat is a permanent erosion control mat utilized for stabilizing slopes, channels, low water crossings, inlet/outlet protection, and shorelines. Tied Concrete Block Mat is a generic term for **Flexamat**. It consists of concrete blocks (6.5" x 6.5" with a 2.25" profile) locked together and embedded into a high strength geogrid. There is 1.5" spacing between the blocks that gives the mat flexibility and allows for optional vegetation growth. The mat is packaged in rolls, making transporting and installing **Flexamat** efficient. It is manufactured with various underlayments, determined by onsite conditions.

Vegetated Solution

Flexamat offers permanent, hard armor protection, with a natural vegetation. **Flexamat** may be mowed over with commercial mowing equipment or left to grow wild. Besides grass, there are many other types of native plant species that can be planted to grow within the mat. For example, Willow stakes and other native plugs can be planted within **Flexamat**.

Work With Nature, Not Against

Incorporating perennial vegetation into storm water treatment plans will encourage the benefits of phytoremediation which is the direct use of living green plants for the removal, degradation or containments of contaminants. The establishment of perennial vegetation increases infiltration of storm water runoff into the soil, increased removal of pollutants found in road and parking lots runoff (oils & grease, metals, break dust salt, garbage, nutrients) through filtration and phytoremediation. The perennial vegetation also reduces or eliminates the thermal impacts to storm water runoff by shading the concrete blocks from sunlight and aiding in infiltration and filtering of the runoff, unlike rip rap or other hard armor alternatives.



Benefits of Flexamat®

HIGH PERFORMANCE

EASY MAINTENANCE

FAST INSTALLATION

SIMPLE INSTALLATION

AESTHETICALLY PLEASING

IMPROVES SAFETY

ENVIRONMENTALLY FRIENDLY

REDUCES CONSTRUCTION COSTS

DISCOURAGES GRAFFITI

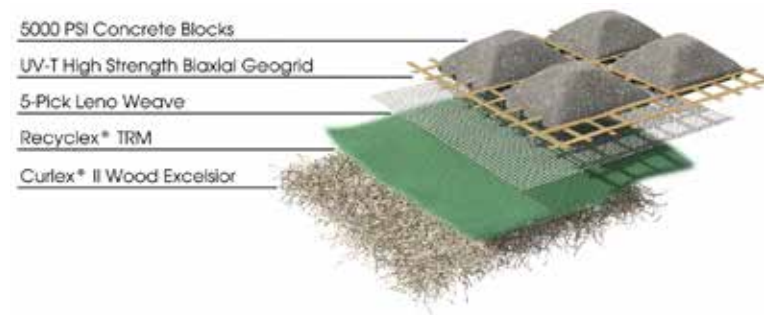
IMPROVES WATER QUALITY

LOW-IMPACT DEVELOPMENT (LID)

Flexamat Standard



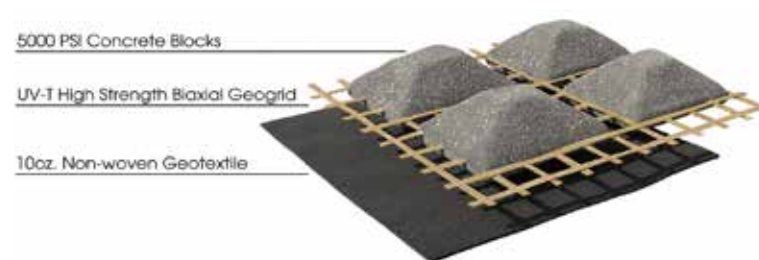
Flexamat Plus UV-T



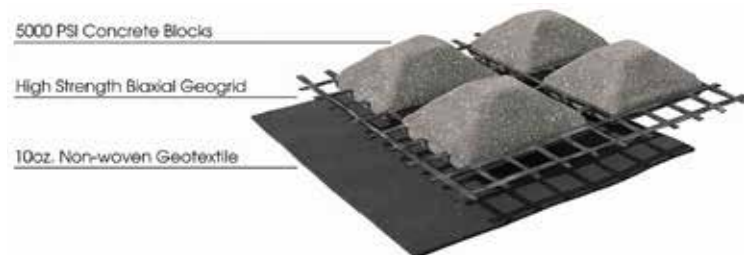
Flexamat Plus



Flexamat 10NW UV-T



Flexamat 10NW



Flexamat NF UV-T



GENERAL COMPOSITION OF MATERIALS

Blocks	5000 PSI, Wet-cast Portland Cement
Interlocking Biaxial Geogrid	Fornit 30/30 Polypropylene Geogrid with 2,055 lb/ft biaxial strength UV-T Polypropylene Geogrid with 2,055 lb/ft biaxial strength
Underlayment Options	Standard - Curlex® II ECB & Leno Weave Plus - Recyclax® TRM-V, Curlex® II ECB & Leno Weave Fabric - 10 oz Non-Woven Geotextile *More options available upon request, including Net Free underlayment.

MANUFACTURING VALUES

Flexamat® Properties	Values
Roll Widths	4' 5.5' 8' 10' 12' 16' 15.5' with geogrid and underlayment extensions (for areas wider than 16')
Roll Lengths	30' 40' 50' / Custom
Material Weight	10 lbs./sf
Block Size	6.5" x 6.5" x 2.25"
Percentage Open Area (POA)	30% min.

PERFORMANCE

Test	Tested Value	Bed Slope	Soil Classification	Limiting Value
ASTM 6460	Shear Stress	30%	Sandy Loam (USDA)	24+PSF
ASTM 6460	Velocity	20%	Loam (USDA)	30+ ft/sec

Departments of Transportation

Roadways Protection



Departments of Transportation

Roadways Protection

FEDERAL | STATE | MUNICIPAL



Three months after installation



One year after installation



Departments of Transportation Roadways Protection



Departments of Transportation

Roadways Protection

FEDERAL | STATE | MUNICIPAL



One year after installation.

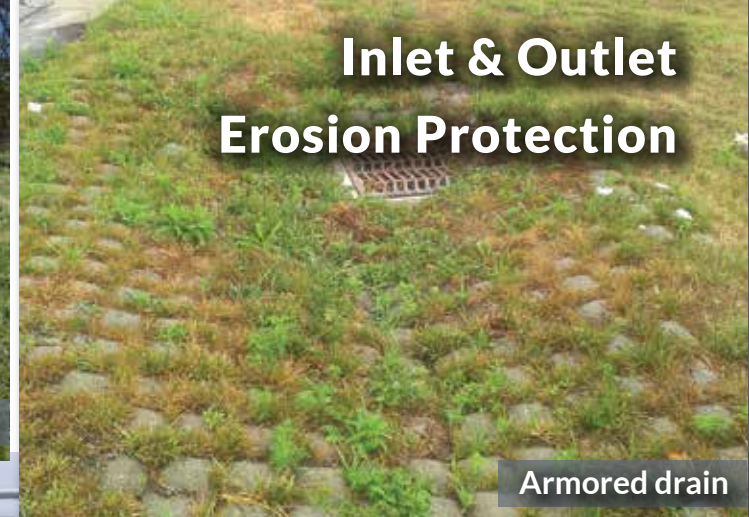




Failing riprap



Outlet armored with Flexamat®, 3 years later



Inlet & Outlet Erosion Protection

Armored drain



Flexamat
EROSION CONTROL



Eroded outlet



Repaired outlet

Landfill Erosion Protection



60' wide letdown just installed



60' wide letdown 4 years
after installation



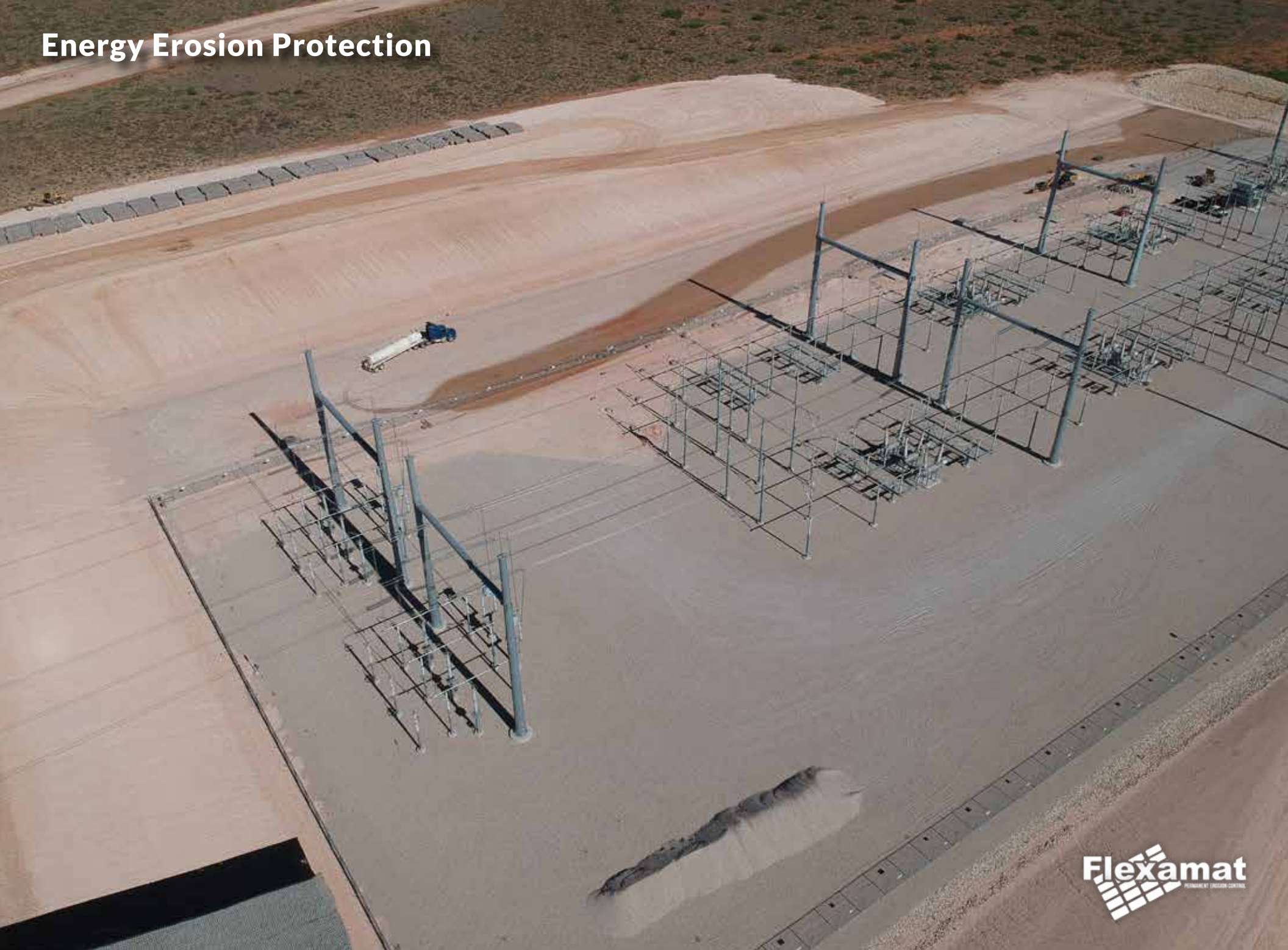
Energy Erosion Protection



Flexamat

Exposed high pressure gas pipeline

Energy Erosion Protection





One year after installation



Flood Control





Three months after installation

Percussion Anchors



Gas powered driver
installation



Loading anchor
with Jack Jaw®



Installed anchors





Airports





Shoreline Erosion Protection





Streambank Protection



Fully vegetated Flexamat® with
native littorals thriving



Drivable Surfaces Erosion Protection



Boat ramp



Gravel infill for residential driveway



Access road



Schools Erosion Protection









Up to 4800 square feet of material can ship on one truckload



Motz Enterprises, Inc.
3153 Madison Road
Cincinnati, OH 45209

web: www.flexamat.com
email: info@flexamat.com
phone: 513-772-6689





Bowman
Construction
Supply Inc.



Quick
Supply Co.



Cascade
GEOSYNTHETICS

LOCATIONS & CONTACT INFO

ASP ENTERPRISES

aspent.com
salesasp@aspent.com

BOWMAN CONSTRUCTION SUPPLY

bowmanconstructionsupply.com
salesbcs@bowmanconstructionsupply.com

QUICK SUPPLY CO.

quicksupplyco.com
salesquick@quicksupplyco.com

CASCADE GEOSYNTHETICS

cascadegeos.com
salescascade@cascadegeos.com

St. Louis, MO 636.343.4357
Omaha, NE 402.861.8579
Kansas City, MO 816.554.1191
Wichita, KS 316.393.1554

Denver, CO 303.696.8960
Colorado Springs, CO 719.257.7840
Loveland, CO 970.535.0863

Des Moines, IA
515.289.1271

Portland, OR
971.339.1020

SOLUTIONS WE SUPPLY

GEOSYNTHETICS

Filter Fabrics

Stabilization Fabrics

Geogrids

- Road Grids
- Wall Grids
- Slope Stabilization

Specialty Fabrics

Composite Geomembranes

- GCLs, PVC, HDPE, LLDPE, EPDM, Granular Bentonite

SEDIMENT CONTROL

Inlet Protection

- Grated Inlet, Curb Inlet, Area Inlet Protection

Ditch Checks

- Triangle Silt Dike
- GeoRidge

Perimeter Protection

- High and Low-Porosity Silt Fence, Straw Wattles, Silt Socks
- Safety Fence

Flocculants & Water Treatment

- Polymer-Based & Natural Flocculants

Sediment Basin Skimmers

Dewatering Bags

Trackout Control

- FODS
- Rumble Grates

Turbidity Curtains

EROSION CONTROL

Basic Hydraulically Applied Mulches

- Wood
- Paper
- Blends
- Straw

High-Performance Hydraulically

Applied Products

- BFM
- FGM
- Additives & Tackifiers

Temporary Erosion Control Blankets

- Coir & Jute Mat/Nettings
- Short-Term ECBs
- Extended-Term ECBs

Permanent Erosion Control Blankets

- Turf Reinforcement Mats
- HP-TRMs
- Anchor Reinforced Vegetation System

Structural BMPs

- Transition Mats
- Geoweb Cellular Confinement
- Composite Vegetated Armor System
- Flex MSE Vegetated Wall System
- Articulated Concrete Block
- Gabions
- Grout-Filled Geotextile Mats

Vegetation Establishment

- Native Seed & Turf Seed
- Fertilizers
- Organic Soil Additives
- Stratavault Soil Cells

STORMWATER MANAGEMENT

Water Quality

- Inlet Filter Boxes
- Pre-Treatment Chamber
- Nutrient Separating Baffle Boxes
- High-Flow Biofiltration Media
- Hydrodynamic Separators
- Stratavault

Water Quantity

- Modular Underground Storage Systems
- Chamber Detention Systems

Drainage

- HDPE Swale Liner
- Pipe & Fittings
- Drainage Composites
- Strip Drain

Inlet Structures

- PVC
- Drain Basins, In-Line Drains
- Landscape

Permeable Pavers

- Permeable Articulating Concrete Block
- Grass Pavers
- Gravel Pavers
- Concrete Pavers

SPECIALTY

Natural & Synthetic Coir Fiber Logs

Vegetated Reinforced Soil Slopes

Soil Anchors

Root Barrier System

AquaBlok

Muscle Wall

We are full line distributors of construction materials for all project types. Contact us for assistance with a project. From specification and development to installation and completion, we're here to help with all of your site solution needs.

GEOSYNTHETICS | EROSION CONTROL | STORMWATER MANAGEMENT
SEDIMENT CONTROL | REVEGETATION & SOIL AMENDMENTS