

## PROPRIETARY INFORMATION

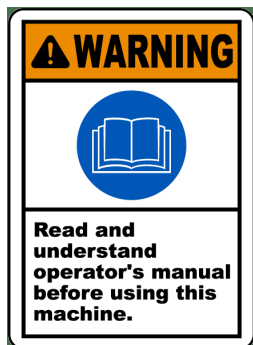
The information in this guide is intended to be used as a reference to parts and their locations to aid the owner, operator, and mechanics using this piece of equipment. This document in any form is not to be copied, sold, or used as an engineering document to construct, modify, or design any such equipment. All information and drawings herein belong exclusively to Curry Supply Company and may not be duplicated in any way without prior written consent from Curry Supply Company.

## DISCLAIMER

The information in this guide may not reflect the full configuration of your vehicle. The parts displayed are for general reference and any "custom" additions may not be fully shown.

**Curry Supply Company** is a ISO9001 compliant company. Below you will find all the revisions pertaining to this document.

REVISION NUMBER	INITIALS	CHANGES	DATE
1	MLC	Updated Manual to Operator's Card	4/28/17
2	MLC	Updated layout, added warning section	4/28/17



It is the users responsibility to read and understand all documents, warning labels, and rules associated with operating this machine. Do not operate equipment around flames. Always practice safe operating habits. Always perform pre-use checks to ensure no issues are found. Double check all safety stops are operating and break off valves are connected and complete.



## OFF ROAD WATER Operating Guide

Document Number 100-001o

### STOP!

You must read this document before attempting to operate this vehicle. Failure to do so may void your warranty and can result in serious injury or death.

### PARTS

800.567.5127

### WARRANTY/SERVICE

800.345.2829

1624 Curryville Road, Martinsburg, PA 16662  
CurrySupply.com

## ATTENTION MACHINE OPERATOR!!!

Truck engine must be at idle speed when activating or de-activating the water pump system. Failure to do so will cause permanent pump damage and will void manufacturer's warranty.

### MOBILE OPERATIONS/CANNON: ACTIVATING

**Check Water Level Before Spaying with the Truck in Park, Start the Engine.**

Select a **spray valve(s)** and flip it to the on position. The valve is open. Be sure to check your surroundings.



CONTROL STYLE/LOCATION MAY VARY



#### Engage the Water Pump.

(note: some truck models may use a slide switch that is part of the truck.)

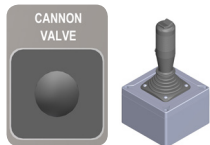
Select drive, and operate the truck normally. Do not exceed the recommended rpm labled on the dash note: if there is no rpm limit stuck to the dash, call curry supply before operating

**Note:** switch location /type may vary



#### Water Cannon:

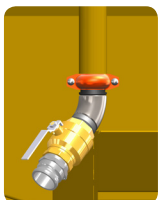
Active the cannon valve.  
Activate the cannon power.  
Activate the water pump.  
Adjust cannon with the joystick.



### MOBILE OPERATIONS/CANNON: ACTIVATING

**Caution:** the spray valves should never be closed while the water pump is on and the system is under pressure. Slow to under 1000 rpm and disengage the water pump using the selector switch.

**Once the pump is shut down,** close your spray nozzles. If the cannon was in use, shut off the cannon power, and close the cannon valve follow the truck manufacturers manual for proper shut down procedure.



**Connect the source hose** to the nipple. Rotate the fill valve handle to the "in-line" position and turn the source on. When filled to the desired level, turn off the source. Close the fill valve handle to parallel with the valve then disconnect the source hose.

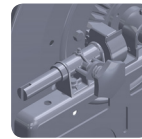
### WATER HOSE INSTRUCTIONS

**With the Truck in Park and the Parking Brake Engaged, Start the Engine.**

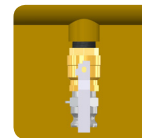


#### Activate the Water Pump.

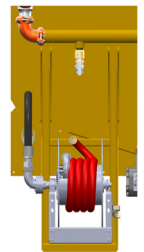
\*Note: Switch Location/Type may vary.



**At the rear of the truck,** unlock the hose reel



**Unravel the amount** of hose needed. Secure the hose end then open the ball valve above the reel. Open is when the handle is in-line with the valve.



**Open the hose nozzle.** The spray can be adjusted by turning the nozzle clockwise and counter clockwise.

#### When Spraying is Complete

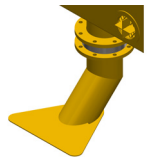
- Close the nozzle
- Close the ball valve
- Reel in the hose
- Lock the reel. (keep the reel locked unless being used)
- Go to the cab and turn off the water pump.
- Follow the truck manufacturers manual for proper shut down procedure.

### DUMP VALVE OPERATION/TANK DRAINING

**The gravity dump** does not need the water pump activated to work. The dump valve can also be used to drain the tank.



**To activate the dump valve** while driving, activate the dump valve switch.



**To drain the tank,** turn the ignition on so the unit has power, then activate the dump valve. (the ignition can be turned back off.) located at the water pump are 2 mini ball valves. Open these valves when draining the tank.