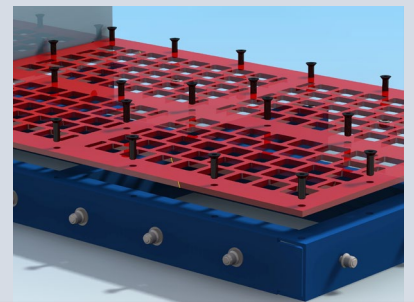
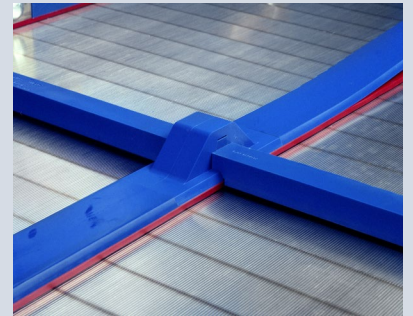
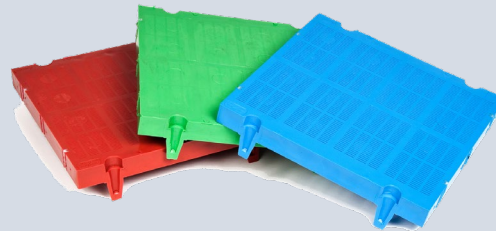
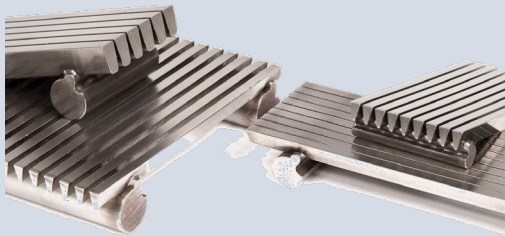
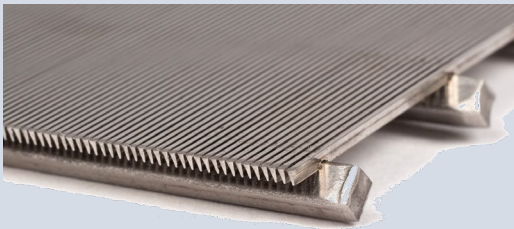


# CONN WELD

**CONN-WELD INDUSTRIES, LLC.**

*Rely on the people who know screen systems!*



---

Profile Wire | Urethane | Perforated Plate | Locking & Hold-Down Systems

---

Since 1975



Princeton, West Virginia USA

[www.CONN-WELD.com](http://www.CONN-WELD.com)

Conn-Weld Industries, LLC - Princeton, WV 24740 – 304.487.1421-[www.conn-weld.com](http://www.conn-weld.com)

Every screen application presents a new challenge. Over the years Conn-Weld has met this challenge by engineering and designing screen systems to size, dewater, filter, and to work under abrasive tough jobs.



We have engineered innovative solutions for coal applications, aggregate, scalping pond recover, wood and corn wet milling, scrap metal, minerals and organic fertilizers, sand and gravel, cement and asphalt, and more.

We have positioned district managers globally to guide you through the screen media selection process. Our specialist ask the right questions and know the right answers to make sure you get solutions for your screening application.

Contact our experts today and let us help you choose the right screen systems to meet your needs.

---

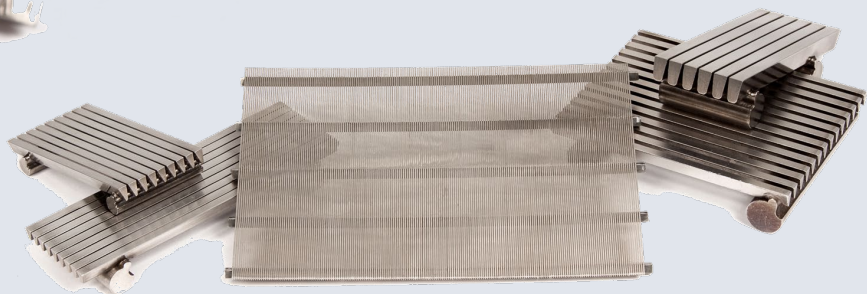
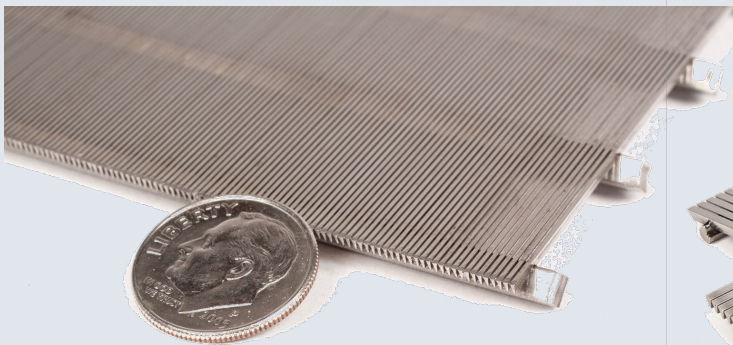
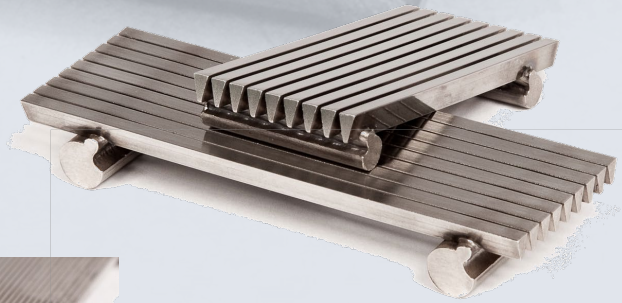
### **Conn-Weld Screening Systems and Media Products**

- Tuff-Screens and Profile Wire
- Urethane
- Perforated Plate
- Tufflok Screen Panel Locking Systems
- Patented Panelok Screen Hold-Down System
- Patented Panelok II Locking System

# CONN WELD

**CONN-WELD INDUSTRIES, LLC.**

## PROFILE WIRE



Conn-Weld knows screen systems. Since 1975, we have perfected our manufacturing processes and understand the key requirements to ensure the best performance.

First, Conn-Weld engineers are experts in choosing the correct opening and wire size for maximum screen life in your specific application.

Second, we manufacture all stainless profile wire and shapes in our own mill. Using special instrumentation, we monitor every inch of wire to ensure proper tolerances and consistency are maintained. Through years of testing, we have determined metallurgical content of every pound of wire for optimum screen life.



Conn-Weld Tuff Screens®, a proven Fusion Welding Process and Forge Welding Process, guarantee reliable screen assembly so no members fail prematurely.

- Profile screens manufactured in any type of steel
- A range of openings to select from
- Panels framed using rubber, mild steel, or stainless steel
- Screen support options available such as deflector strips
- Proper tolerances and sharp edges minimize break-in period
- Screen openings from .0015" to 3"
- 304 and 316 Stainless Steel (others available upon request)
- Fine screening up to 100 microns
- Rubber, mild steel, stainless steel and other framing options available
- Screen panels for any vibrator

# DEWATERING CAPACITY, STATIC SIEVE BEND

(GPM PER LINEAL FOOT OF SCREEN)

PROFILE WIRE	.010" 1/4MM	.013" 1/3MM	.020" 1/2MM	.030" 3/4MM	.040" 1MM	.050" 1-1/4MM	.060" 1-1/2MM	
.030	100	115	160	*	*	*	*	*
.045	60	75	145	*	*	*	*	*
C1/16	35	60	130	195	240	270	*	*
C3/32	*	*	100	100	195	215	240	280
C1/8	*	*	70	125	155	185	210	240

% SOLIDS: 20% @ 50#/FT<sup>3</sup>  
 30% @ 100#/FT<sup>3</sup>  
 40% @ 150#/FT<sup>3</sup>

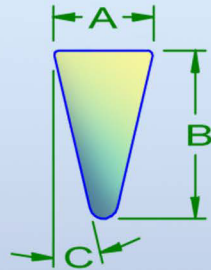
## SCREEN ROD SELECTIONS

### ROUND RODS

ACTUAL SIZE

-  1/8"
-  5/32"
-  3/16"
-  1/4"
-  5/16"
-  3/8"
-  1/2"

### "C" PROFILE



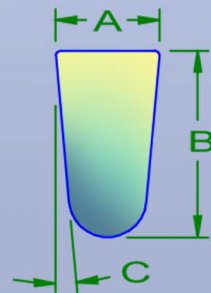
1-1/2 TIMES ACTUAL SIZE

	.030"	.045"	1/16"	3/32"	1/8"
A	.030"	.045"	1/16"	3/32"	1/8"
B	1/16"	3/32"	7/64"	5/32"	13/64"
C	-	-	13°	13°	13°



A-WIDTH OF ROD  
 B-DEPTH OF ROD  
 C-ANGLE OF INCIDENCE

### "CG" PROFILE



1-1/2 TIMES ACTUAL SIZE

	1/16"	3/32"	1/8"	5/32"	3/16"
A	1/16"	3/32"	1/8"	5/32"	3/16"
B	7/64"	11/64"	7/32"	19/64"	11/32"
C	-	5°	5°	5°	5°



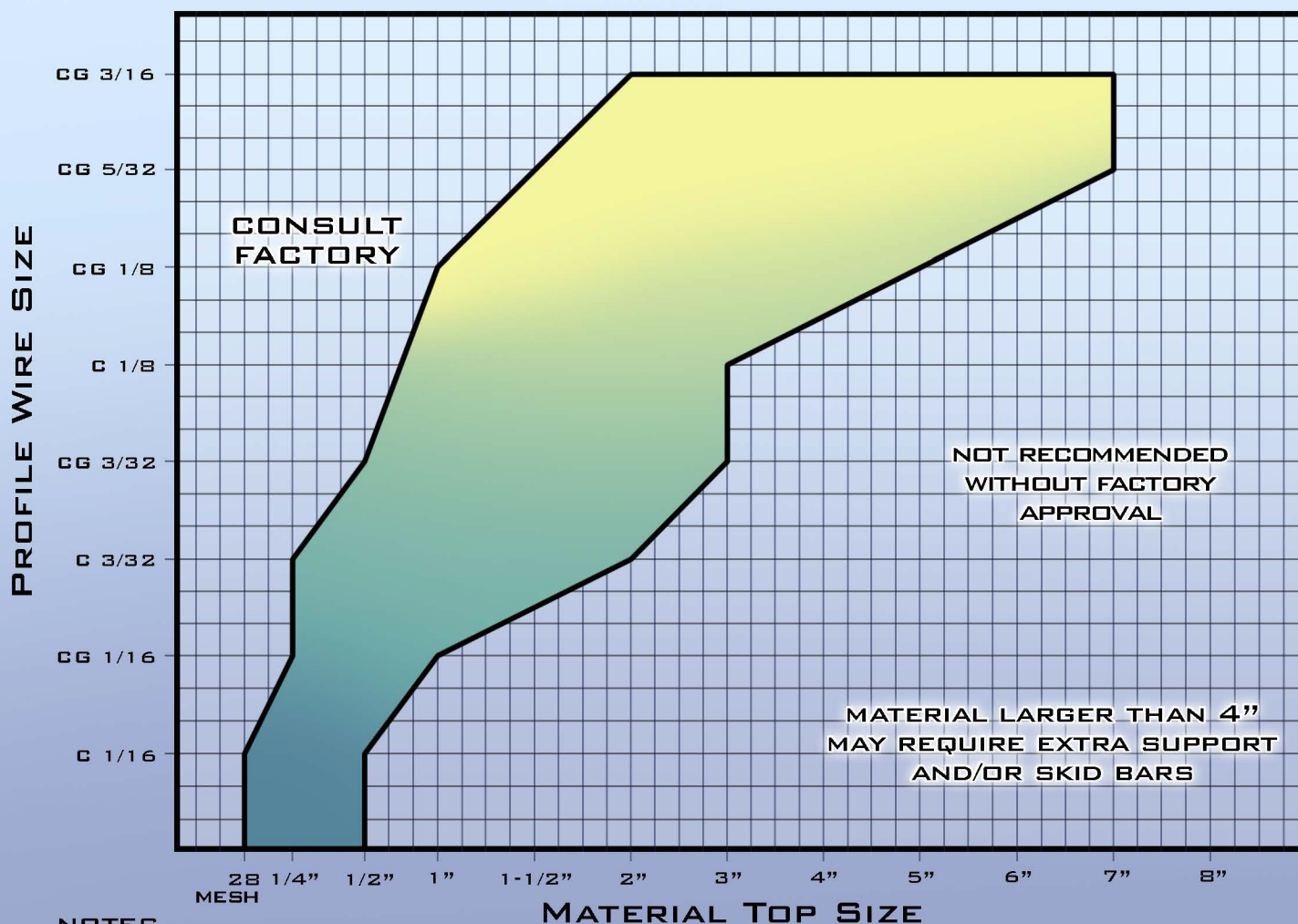
# CONN WELD<sup>®</sup>

PRACTICAL AND CREATIVE  
SCREEN DESIGNS FOR ALL  
INDUSTRIAL APPLICATIONS



Mr. Tuff-Screen<sup>®</sup>

## WIRE APPLICATION GUIDE - FLAT SCREENS



### NOTES

- 1.) BASED ON 50 POUNDS PER CUBIC FOOT
- 2.) AS IN ALL SCREEN APPLICATIONS, IMPACT OF FALLING MATERIAL AND VELOCITY AND VOLUME MUST BE HELD TO A MINIMUM. CONSULT WITH YOUR SCREEN APPLICATION ENGINEER.

# OPEN AREA CHART

[Open Area Chart](#), available under services/resource center on our website [Conn-Weld.com](http://Conn-Weld.com)

MM = 21/MESH		MICRONS	FINE WIRE		"RC" PROFILE		"C" PROFILE		"CG" PROFILE				OPENINGS		PASS THRU = 100GPM / FT <sup>2</sup> OF OPEN AREA							
			10°		13°		13°		5°		CONN-WELD		ROUND HOLE	SQUARE HOLE	REF. TYLER MESH	INCHES						
			"A" DIM.	"A" DIM.	"A" DIM.	"A" DIM.	"A" DIM.	"A" DIM.	MM	INCHES												
MM	INCHES	0.03	0.045	0.03	1/16"	3/32"	1/16"	3/32"	1/8"	3/32"	0.11	1/8"	5/32"	3/16"	1/4"	MM	INCHES	ROUND HOLE	SQUARE HOLE	REF. TYLER MESH	INCHES	
0.001	25	3.2	2.2	3.2	1.6	1.1	1.6	1.1	0.8	1.1	0.9	0.8	0.6	0.5	0.4	0.001				400	0.0015	
0.002	50	6.3	4.3	6.3	3.2	2.2	3.2	2.2	1.6	2.2	1.8	1.6	1.3	1.1	0.8	0.002				250	0.0024	
0.003	75	9.1	6.3	9.1	4.8	3.2	4.8	3.2	2.4	3.2	2.7	2.4	1.9	1.6	1.2	0.003				200	0.0029	
0.004	100	11.8	8.2	11.8	6.2	4.3	6.2	4.3	3.2	4.3	3.5	3.2	2.5	2.1	1.6	0.004				150	0.0041	
1/8	0.005	125	14.3	10	14.3	7.7	5.3	7.7	5.3	4	5.3	4.3	4	3.1	2.6	2	1/8	0.005			100	0.0058
	0.006	150	16.7	11.3	16.7	9.1	6.3	9.1	6.3	4.8	6.3	5.2	4.7	3.7	3.1	2.3		0.006			80	0.0069
	0.007	177	18.3	13.5	18.9	10.4	7.2	10.4	7.2	5.5	7.2	6	5.5	4.3	3.6	2.7		0.007			65	0.0082
1/5	0.008	200	21.1	15.1	21.1	11.8	8.2	11.8	8.2	6.2	8.2	6.8	6.2	4.9	4.1	3.1	1/5	0.008			60	0.0097
1/4	0.01	250	25	18.2	25	14.3	10	14.3	10	7.7	10	8.3	7.6	6	5.1	3.8	1/4	0.01			48	0.0116
1/3	0.013	330	30.2	22.4	30.2	17.8	12.6	17.8	12.6	9.8	12.6	10.6	9.7	7.7	6.6	4.8	1/3	0.013			42	0.0138
2/5	0.016	400	34.8	26.2	34.8	21.1	15.1	21.1	15.1	11.8	15.1	12.7	11.7	9.3	8	6	2/5	0.016			35	0.0164
	0.018	450	37.5	28.6	37.5	23.1	16.7	23.1	16.7	13	16.7	14.1	12.9	10.3	8.9	6.7		0.018			32	0.0195
1/2	0.02	500	40	30.8	40	25	18.2	25	18.2	14.3	18.2	15.4	14.2	11.4	9.8	7.4	1/2	0.02	1/32		28	0.0232
3/5	0.024	620	44.4	34.8	44.4	28.6	21.1	28.6	21.1	16.7	21.1	17.9	16.6	13.3	11.5	8.8	3/5	0.024			24	0.0276
3/4	0.03	750	50	40	50	33.3	25	33.3	25	20	25	21.4	19.9	16.1	14	10.7	3/4	0.03	3/64		20	0.0328
1	0.04	1000	57.1	47.1	57.1	40	30.8	40	30.8	25	30.8	26.7	24.8	20.4	17.8	13.8	1	0.04			16	0.039
1-1/4	0.05	1250	62.5	52.6	62.5	45.5	35.7	45.5	35.7	29.4	35.7	31.3	29.2	24.3	21.3	16.7	1-1/4	0.05	1/16		14	0.045
1-3/8	0.055	1410	64.7	55	64.7	47.8	37.9	47.8	37.9	31.4	37.9	33.3	31.2	26.1	22.9	18	1-3/8	0.055			12	0.0555
1-1/2	0.06	1500	66.7	57.1	66.7	50	40	50	40	33.3	40	35.3	33.1	27.8	24.5	19.4	1-1/2	0.06	5/64		10	0.065
1-5/8	0.065		68.4	59.1	68.4	52	41.9	52	41.9	35.1	41.9	37.1	34.9	29.4	26	20.6	1-5/8	0.065	3/32		9	0.078
1-3/4	0.07		70	60.9	70	53.8	43.8	53.8	43.8	36.8	43.8	38.9	36.6	31	27.5	21.9	1-3/4	0.07	7/64		8	0.093
2	0.08		72.7	64	72.7	57.1	47.1	57.1	47.1	40	47.1	42.1	39.8	33.9	30.2	24.2	2	0.08	1/8		7	0.11
2-1/4	0.09		76	66.7	76	60	50	60	50	42.9	50	45	42.7	36.6	32.7	26.5	2-1/4	0.09	9/64	3/32		
2-1/2	0.1		78.9	69	78.9	62.5	52.6	62.5	52.6	45.5	52.6	47.6	45.2	39.1	35.1	28.6	2-1/2	0.1	5/32		6	0.131
2-3/4	0.11		78.6	71	78.6	64.7	55	64.7	55	47.8	55	50	47.6	41.4	37.3	30.6	2-3/4	0.11	11/64			
3	0.12		80	72.7	80	66.7	57.1	66.7	57.1	50	57.1	52.2	49.8	43.5	39.3	32.4	3	0.12	3/16	5/32	5	0.156
	0.125		82.4	76	82.4	70.1	61	70.1	61	54	61	56.1	53.8	47.5	43.3	36.1		0.125			4	0.185
3-1/5	0.15		86.2	81	86.2	75.8	67.6	75.8	67.6	61	67.6	63	60.8	54.6	50.3	42.9	3-1/5	0.15	1/4	3/16		
	0.16		88	83	88	78.5	70.9	78.5	70.9	64.6	70.9	66.5	64.4	58.4	54.2	46.7		0.16			3	0.263
1/4	0.18		89.3	84.7	89.3	80.6	73.5	80.6	73.5	67.6	73.5	69.4	67.4	61.6	57.5	50	1/4	0.18	5/16	1/4	3	0.312
	0.18		91.2	87.4	91.2	83.9	77.6	83.9	77.6	74	77.6	74	72.1	66.7	62.8	55.6		0.18			5/16	7/16
3/8	0.2		92.6	89.3	92.6	86.2	80.6	86.2	80.6	75.8	80.6	77.3	75.6	70.6	67	60	3/8	0.2	3/8		1/2	3/8
	0.2		93.6	90.7	93.6	87.9	82.9	87.9	82.9	78.5	82.9	79.9	78.3	73.7	70.3	63.6		0.2			7/16	9/16
1/2	0.22		94.3	91.7	94.3	89.3	84.7	89.3	84.7	80.6	84.7	82	80.5	76.2	73	66.7	1/2	0.22	1/2		5/8	1/2
	0.22		94.9	92.6	94.9	90.4	86.2	90.4	86.2	82.4	86.2	83.6	82.3	78.3	75.3	69.2		0.22			9/16	11/16
5/8	0.25		95.4	93.3	95.4	91.2	87.4	91.2	87.4	83.9	87.4	85	83.8	80	77.2	71.4	5/8	0.25	5/8		3/4	5/8
	0.25		95.8	93.8	95.8	92	88.4	92	88.4	85.1	88.4	86.2	85	81.5	78.8	73.3		0.25			11/16	13/16
3/4	0.28		96.2	94.3	96.2	92.6	89.3	92.6	89.3	86.2	89.3	87.2	86.1	82.8	80.2	75	3/4	0.28	3/4		3/4	
	0.28		96.7	95.1	96.7	93.6	90.7	93.6	90.7	87.9	90.7	88.8	87.9	84.9	82.5	77.8		0.28			7/8	1
1	0.3		97.1	95.7	97.1	94.3	91.7	94.3	91.7	89.3	91.7	90.1	89.2	86.5	84.4	80	1	0.3			1	1-1/4
	0.3		97.7	96.5	97.7	95.4	93.3	95.4	93.3	91.2	93.3	91.9	91.2	88.9	87.1	83.3		0.3			1-1/4	1-1/2
1-1/2	0.35		98	97.1	98	96.2	94.3	96.2	94.3	92.6	94.3	93.2	92.5	90.6	89	85.7	1-1/2	0.35			1-3/4	1-1/2
1-3/4	0.375		98.3	97.5	98.3	96.7	95.1	96.7	95.1	93.6	95.1	94.1	93.5	91.8	90.4	87.5	1-3/4	0.375			2	1-3/4

Determining open area:

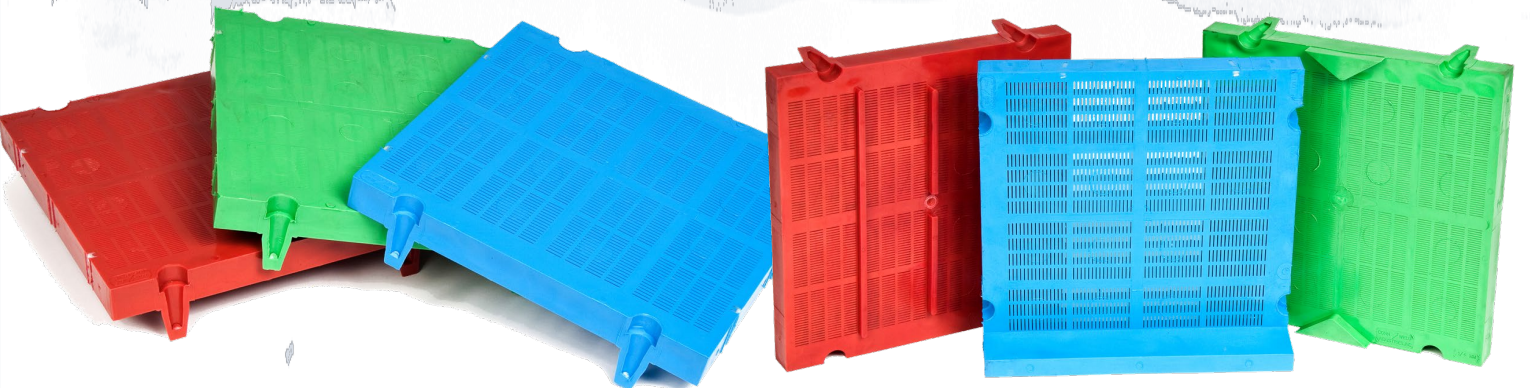
If you desire 1/2 mm opening width C 3/32 wire, the chart will show you that this would be 18.2% open area. To determine this percentage, read down the Conn-Weld column at left to 1/2 mm (or .020 inches) then read straight across to the "C" Profile section under "A" dimension for 3/32.

# CONN WELD

**CONN-WELD INDUSTRIES, LLC.**



**URETHANE**



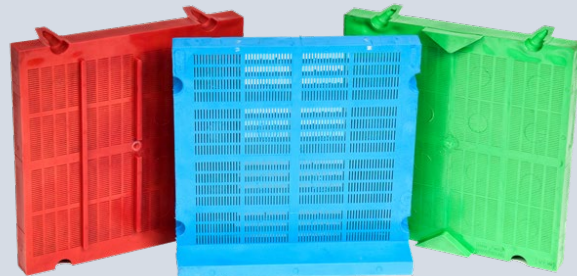


Conn-Weld's Urethane is made of the highest quality materials in the industry to suit the most abrasive applications whether wet screening or dry screening.

---

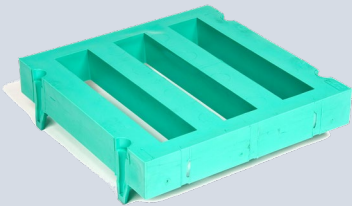
Urethane panels available in a variety of opening and thickness:

- 0.25mm to 2" slotted openings
- Non-blinding openings for better screen filtration
- High open area panels for better screening capability
- 1' x 1' panels available in a variety of thicknesses from 30mm to 50mm
- Up to 2' x 4' open cast molded urethane panels for larger media



Special features enhance filtration:

- Red panel has restrictive flow to slow material for better filtration.
- Blue panel is manufactured with large end-dam to reduce flow of media over screen helping better filter material.
- Green panel keeps material over screen openings using side-guides.

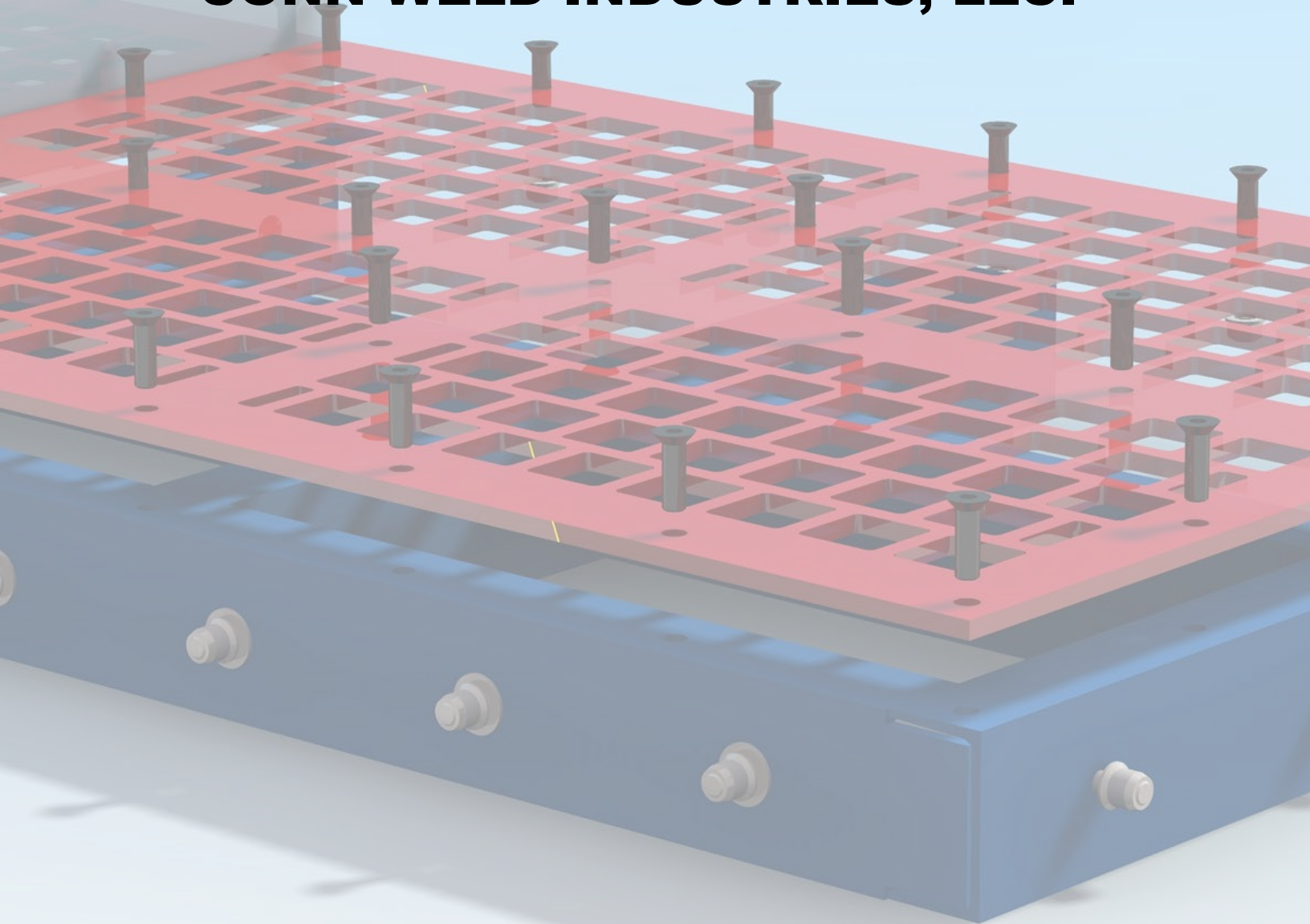


2" x 10" large opening, 50mm thick panel

- A variety of boltless urethane assemblies available:
  - Pin-style makes for simple installation using durable plastic pins keeping panels secure.
  - Be sure to ask about Conn-Weld Tufflok Systems.
  - Conn-Weld custom manufactures hold-down devices.
-

# CONN WELD

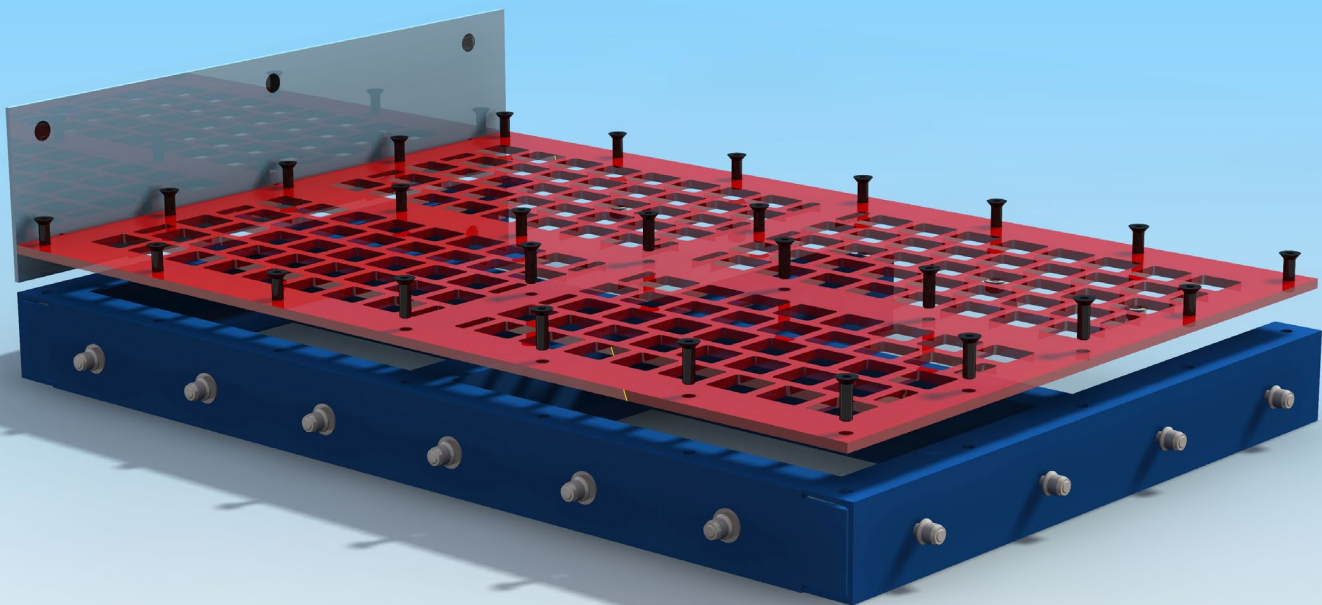
**CONN-WELD INDUSTRIES, LLC.**



**PERFORATED PLATE**

**Conn-Weld's Perforated Plate** brings screening strength and efficiency to our vibrating screens in numerous applications. Computer Automated Design (CNC) combined with precision manufacturing assure your specific screen type and opening is achieved. Renowned for being resistant to plugging and sustaining size accuracy, our perforated plate is available in many selections.

---



Options:

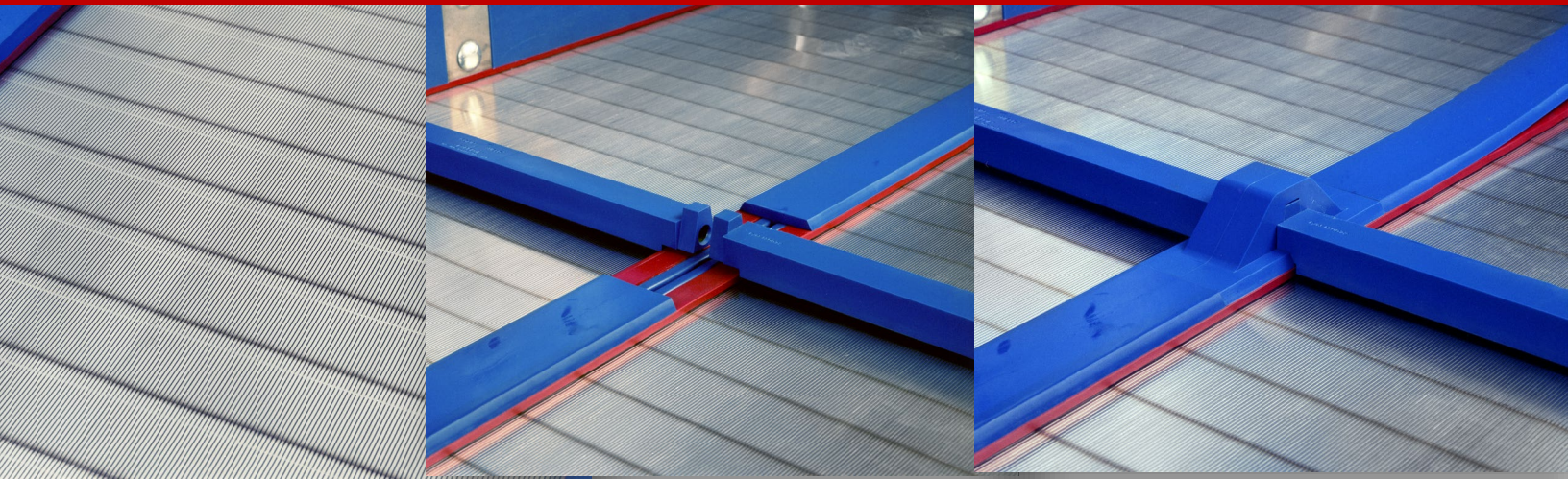
- Material: AR, mild steel, stainless steel (others available)
- Thickness: 1/4, 3/8, 1/2
- Openings: 1/4" up to 12"
- Hold-down systems: Bolt-in and C-Type clamp
- Types: Round, slotted, square

# CONN WELD

**CONN-WELD INDUSTRIES, LLC.**

***PANELOK***™

**CONN-WELD'S TIME SAVING SCREEN HOLD-DOWN SYSTEM**

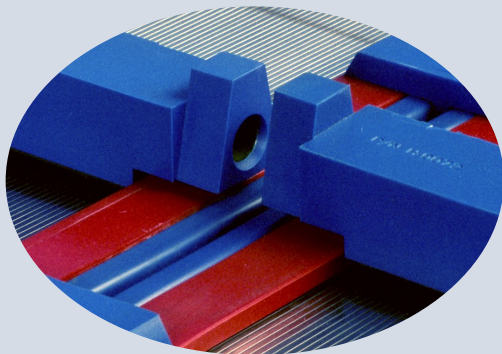


*The **PANELOK** systems are easy to install and easier to maintain!*

Conn-Weld understands the effect that high maintenance costs and down-time have on your plant operations. That's why we developed the PANELOK Screen Hold-Down Systems.

---

Side hold-downs are manufactured from an extremely abrasive resistant material replacing existing wooden hold-downs *without* side plate modification.

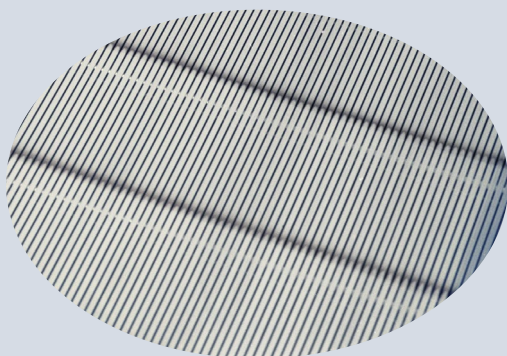
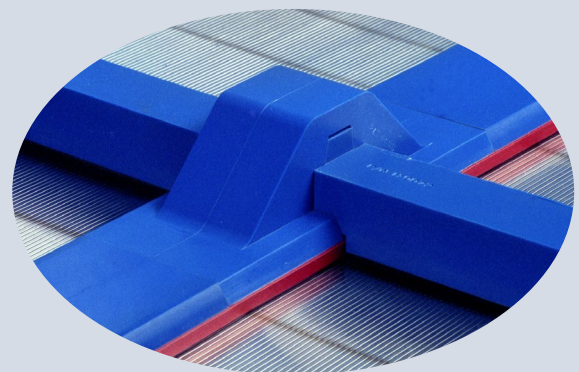


High durable foam rubber securely seal all screen seams.

Designed for simple installation and replacement of individual screen panels.

Dam retainers double as a screen clamping lock strip.

Screen panels clamp uniformly  
Self-protective design prevents wear  
Designed to use existing bucker bars  
and standard bucker rubber



Profile screens are built according to the same industry standards you have come to expect from all your Conn-Weld screen products